

SECTION A, AUXILIARY FRAMING, 1000 SERIES

FIGURE NUMBER	DESCRIPTION	PAGES
<i>NOTE: ADDITIONAL GROUNDING AND INSULATOR / ISOLATION ITEMS ARE IN SECTION E.</i>		
FIG. 001002	AUXILIARY FRAMING CHANNEL, 2" X 1" X 3/16".....	A-1
FIG. 001003	JUNCTIONING 2" X 1" X 3/16" AUXILIARY CHANNEL.....	A-2
FIG. 001004	JUNCTIONING 2" X 1" X 3/16" AUXILIARY CHANNEL AT RIGHT ANGLES.....	A-2
FIG. 001005	SPLICING 2" X 1" X 3/16" AUXILIARY CHANNEL.....	A-3
FIG. 001006	JUNCTIONING 2" X 1" X 3/16" AUXILIARY CHANNEL AT RIGHT ANGLES.....	A-3
FIG. 001007	2" X 1" X 3/16" AUXILIARY CHANNEL "T" JUNCTION.....	A-4
FIG. 001008	2" X 1" X 3/16" AUXILIARY CHANNEL CROSSOVER JUNCTION.....	A-4
FIG. 001012	FASTENING FRAME TOP ANGLE TO AUXILIARY PIPE.....	A-5
FIG. 001013	FASTENING FRAME TOP ANGLE TO 2" X 1" X 3/16" AUXILIARY CHANNEL.....	A-5
FIG. 001014	FASTENING FRAME TOP ANGLE TO 2" X 1" X 3/16" AUXILIARY CHANNEL WITH 2" SPACER BETWEEN.....	A-6
FIG. 001015	FASTENING 2" X 1" X 3/16" AUXILIARY CHANNEL TO TOP ANGLE OF FRAME.....	A-6
FIG. 001016	JUNCTIONING 2" X 1" X 3/16" AUXILIARY CHANNEL BETWEEN TOP ANGLES OF FRAME.....	A-7
FIG. 001017	SUPPORTING CABLE RACK OVER 2" X 1" X 3/16" AUXILIARY CHANNEL SPLICE.....	A-7
FIG. 001018	SUPPORTING 2" X 1" X 3/16" AUXILIARY CHANNEL WITH THREADED ROD.....	A-8
FIG. 001019	SUPPORTING AUXILIARY CHANNEL FROM FLOOR WITH 2" PIPE STAND.....	A-9
FIG. 001020	SUPPORTING AUXILIARY CHANNEL FROM FLOOR WITH SUPPORT ANGLE.....	A-10
FIG. 001021	PARALLEL AUXILIARY FRAMING BAR, 2" X 3/8".....	A-11

SECTION A, AUXILIARY FRAMING, 1000 SERIES

FIGURE NUMBER	DESCRIPTION	PAGES
FIG. 001022	PARALLEL AUXILIARY FRAMING CHANNEL, 2" X 9/16" X 3/16".....	A-12
FIG. 001023	AUXILIARY FRAMING JUNCTION WITH STRAIGHT CLAMPS.....	A-13
FIG. 001024	AUXILIARY FRAME "T" JUNCTION WITH CORNER CLAMPS.....	A-13
FIG. 001024	PARALLEL AUXILIARY FRAMING CHANNEL "T" JUNCTION WITH SPLICE BAR.....	A-14
FIG. 001024	PARALLEL AUXILIARY FRAMING CHANNEL "X" JUNCTION WITH SPLICE BAR.....	A-14
FIG. 001025	SUPPORTING PARALLEL AUXILIARY FRAMING BAR FROM THREADED ROD.....	A-15
FIG. 001025	SUPPORTING PARALLEL AUXILIARY FRAMING CHANNEL FROM THREADED ROD.....	A-15
FIG. 001026	SUPPORTING PARALLEL AUXILIARY FRAMING BAR CROSS-OVER FROM THREADED ROD	A-16
FIG. 001026	SUPPORTING AUXILIARY FRAMING CHANNEL CROSS-OVER FROM THREADED ROD.....	A-16
FIG. 001027	MOUNTING AUXILIARY FRAMING BAR TO WALL ANGLE.....	A-17
FIG. 001027	MOUNTING PARALLEL AUXILIARY FRAMING CHANNEL TO WALL ANGLE.....	A-17
FIG. 001028	AUXILIARY FRAMING BAR FINISHING CLIP.....	A-18
FIG. 001028	PARALLEL AUXILIARY FRAMING CHANNEL FINISHING CLIP.....	A-18
FIG. 001029	CONNECTING AUXILIARY FRAMING BAR ACROSS AUXILIARY FRAMING BAR.....	A-19
FIG. 001029	CONNECTING PARALLEL AUXILIARY FRAMING CHANNEL ACROSS AUXILIARY FRAMING CHANNEL.....	A-19
FIG. 001030	SPLICING AUXILIARY FRAMING BAR.....	A-20

SECTION A, AUXILIARY FRAMING, 1000 SERIES

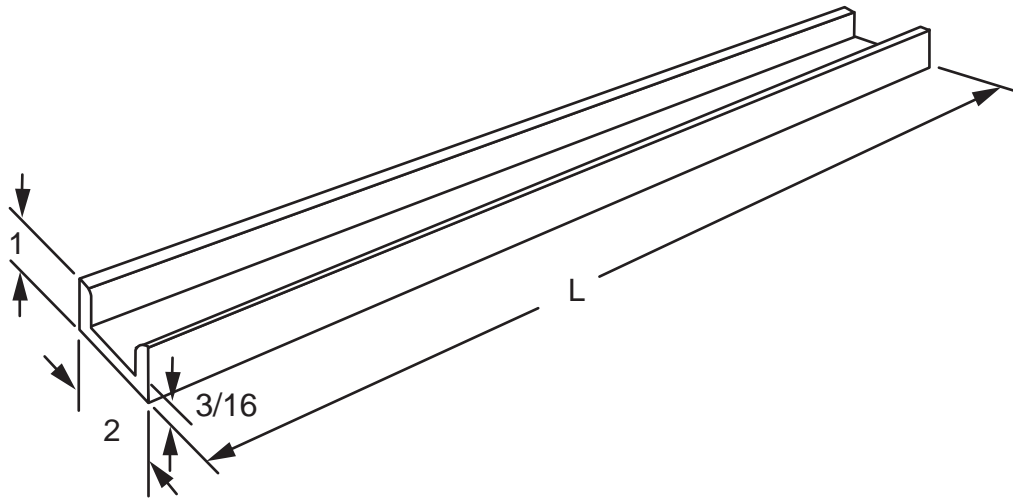
FIGURE NUMBER	DESCRIPTION	PAGES
FIG. 001030	SPLICING PARALLEL AUXILIARY FRAMING CHANNEL.....	A-20
FIG. 213993	AUXILIARY FRAMING SPLICE KIT.....	A-21
FIG. 001032	SUPPORTING FRAME FROM AUXILIARY FRAMING BAR.....	A-22
FIG. 001032	SUPPORTING FRAME FROM PARALLEL AUXILIARY FRAMING CHANNEL.....	A-22
FIG. 001033	JUNCTIONING AUXILIARY FRAMING BAR AT WALL.....	A-23
FIG. 001034	FASTENING FRAME TOP ANGLE TO PARALLEL AUXILIARY FRAMING BAR.....	A-24
FIG. 001034	FASTENING FRAME TOP ANGLE TO PARALLEL AUXILIARY FRAMING CHANNEL.....	A-24
FIG. 001035	FASTENING FRAME TOP ANGLE TO AUXILIARY FRAMING BAR WITH 2" SPACER BETWEEN.....	A-25
FIG. 001035	FASTENING FRAME TOP ANGLE TO PARALLEL AUXILIARY FRAMING CHANNEL WITH 2" SPACER BETWEEN.....	A-25
FIG. 001036	SECURING FRAME TOP ANGLE TO AUXILIARY FRAMING BAR.....	A-26
FIG. 001036	SECURING FRAME TOP ANGLE TO PARALLEL AUXILIARY FRAMING CHANNEL.....	A-26
FIG. 001037	SECURING FRAME TOP ANGLE TO AUXILIARY FRAMING BAR WITH ALTERNATE ASSEMBLY.....	A-27
FIG. 001037	SECURING FRAME TOP ANGLE TO PARALLEL AUXILIARY FRAMING CHANNEL WITH ALTERNATE ASSEMBLY.....	A-27
FIG. 001038	BRACING AUXILIARY FRAMING BAR WITH ANGLE FROM CEILING.....	A-28
FIG. 001038	BRACING PARALLEL AUXILIARY FRAMING CHANNEL WITH ANGLE FROM CEILING.....	A-28
FIG. 001039	SUPPORTING AND BRACING AUXILIARY FRAMING BAR FROM CEILING.....	A-29

SECTION A, AUXILIARY FRAMING, 1000 SERIES

FIGURE NUMBER	DESCRIPTION	PAGES
FIG. 001039	SUPPORTING AND BRACING PARALLEL AUXILIARY FRAMING CHANNEL FROM CEILING.....	A-29
FIG. 210904	BRACING OF AUXILIARY CHANNEL FROM CEILING.....	A-30
FIG. 210904	BRACING OF AUXILIARY BAR FROM CEILING.....	A-30
FIG. 001040	BRACING AUXILIARY FRAMING BAR FROM CEILING OR WALL.....	A-31
FIG. 001040	BRACING PARALLEL AUXILIARY FRAMING CHANNEL FROM CEILING OR WALL.....	A-31
FIG. 001041	BRACING FRAME FROM AUXILIARY FRAMING BAR.....	A-32
FIG. 001041	BRACING FRAMES FROM PARALLEL AUXILIARY FRAMING CHANNEL.....	A-32
FIG. 214040	BRACING LOWER FRAMING AT RIGHT ANGLE.....	A-33
FIG. 001042	SUPPORTING AUXILIARY FRAMING WITH 2" PIPE STAND...	A-34
FIG. 001043	SUPPORTING AUXILIARY FRAMING BAR OR CHANNEL WITH 2" PIPE STAND.....	A-35
FIG. 001044	CEILING HANGER BRACKET.....	A-36
FIG. 001045	CEILING HANGER BRACKET WITH PLATE.....	A-36
FIG. 001046	AUXILIARY FRAMING BAR SPLICE FOR RIGID SPLICE APPLICATION.....	A-37
FIG. 001046	AUXILIARY FRAMING CHANNEL SPLICE FOR RIGID SPLICE APPLICATION.....	A-37
FIG. 001048	AUXILIARY FRAMING MOUNTING ANGLE.....	A-38
FIG. 001049	LADDER TRACK BRACKET ASSEMBLY FOR AUXILIARY FRAMING BAR.....	A-39
FIG. 001049	LADDER TRACK BRACKET ASSEMBLY FOR AUXILIARY FRAMING CHANNEL.....	A-39
FIG. 001052	LADDER HANGER BRACKET USED WITH STACKLITER LIGHT FIXTURE.....	A-40

SECTION A, AUXILIARY FRAMING, 1000 SERIES

FIGURE NUMBER	DESCRIPTION	PAGES
FIG. 001053	INSULATING AUXILIARY FRAMING CHANNEL FROM TOP ANGLE OR WALL ANGLE.....	A-41
FIG. 001054	INSULATING PARALLEL AUXILIARY FRAMING BAR FROM TOP ANGLE OR WALL ANGLE.....	A-42
FIG. 001054	INSULATING PARALLEL AUXILIARY FRAMING CHANNEL FROM TOP ANGLE OR WALL ANGLE.....	A-42
FIG. 001055	PIPE STAND E/W INSULATING PAD.....	A-43
FIG. 001056	BUSHING FOR INSULATING WALL MOUNTING ANGLE.....	A-44
FIG. 001057	SUPPORTING PARALLEL AUXILIARY FRAMING BAR FROM UNEQUAL FLANGE RACK.....	A-45
FIG. 001057	SUPPORTING PARALLEL AUXILIARY FRAMING CHANNEL FROM UNEQUAL FLANGE RACK.....	A-45
FIG. 001058	RUBBER FINISHING CAP FOR AUXILIARY FRAMING BAR...	A-46
FIG. 001058	RUBBER FINISHING CAP FOR AUXILIARY FRAMING CHANNEL.....	A-46
FIG. 210050	POWER CABLE BRACKET ATTACHED TO AUXILIARY CHANNEL.....	A-47
FIG. 210604	BRACING ASSEMBLY, INSULATED.....	A-48
FIG. 213142	SUPPORT BRACKET BRACING KIT.....	A-49
FIG. 212560	J-BOLT KIT.....	A-49



ORDERING TABLE

ORDERING NO.	LENGTH
00100201XX	2'
00100202XX	4'
00100203XX	6'
00100204XX	8'
00100205XX	10'
00100206XX	12'
00100207XX	14'
00100208XX	16'
00100209XX	18'
00100210XX	20'

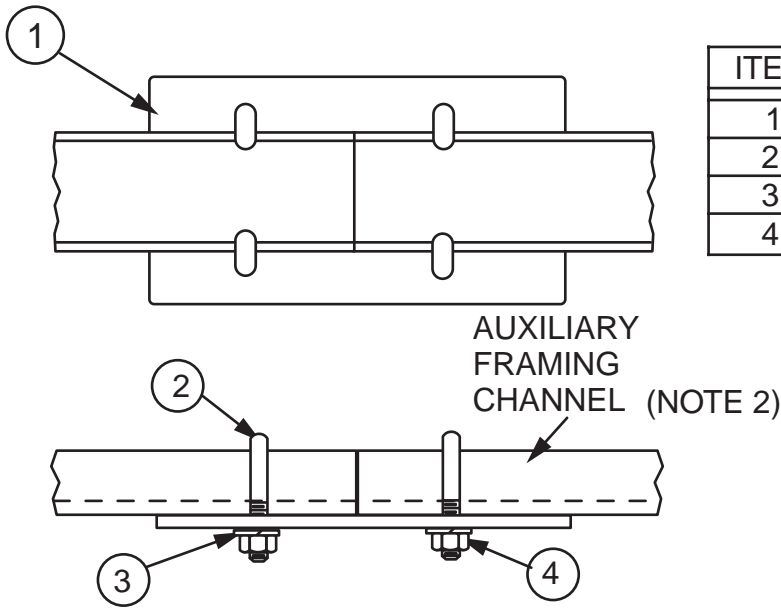
NOTES:

1. XX = FINISH CODE; STANDARD FINISH, XX = 30.
2. MATERIAL: HOT ROLLED STEEL.

ORDERING NUMBER: REFER TO TABLE

AUXILIARY FRAMING CHANNEL, 2" X 1" X 3/16"

FIG. 001002



STOCK LIST

ITEM	QTY	DESCRIPTION
1	1	PLATE
2	4	1/4 J-BOLT
3	4	1/4-20 LOCK WASHER
4	4	NUT

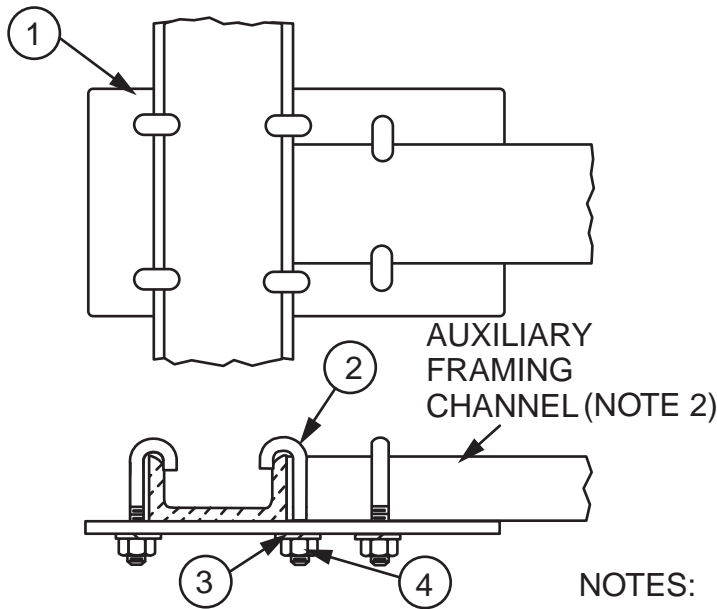
NOTES:

- 1. FINISH IS ZINC PLATED AND GOLD CHROMATE.
- 2. NOT INCLUDED; REFER TO FIG. 001002.

ORDERING NUMBER: 0010030010

JUNCTIONING 2" X 1" X 3/16" AUXILIARY CHANNEL

FIG. 001003



STOCK LIST

ITEM	QTY	DESCRIPTION
1	1	PLATE
2	6	J-BOLT
3	6	1/4 LOCK WASHER
4	6	1/4-20 NUT

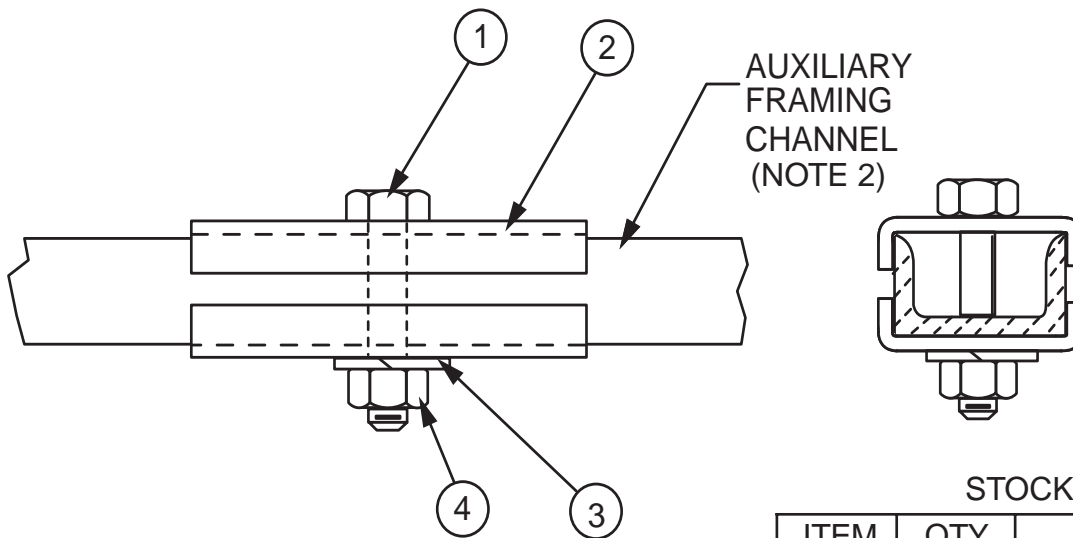
NOTES:

- 1. FINISH IS ZINC PLATED AND GOLD CHROMATE.
- 2. NOT INCLUDED; REFER TO FIG. 001002.

ORDERING NUMBER: 0010040010

JUNCTIONING 2" X 1" X 3/16" AUXILIARY CHANNEL AT RIGHT ANGLES

FIG. 001004



STOCK LIST

ITEM	QTY	DESCRIPTION
1	1	3/8-16 X 1-3/4 HHCS
2	2	SPLICE CLAMP
3	1	3/8 LOCK WASHER
4	1	3/8-16 NUT

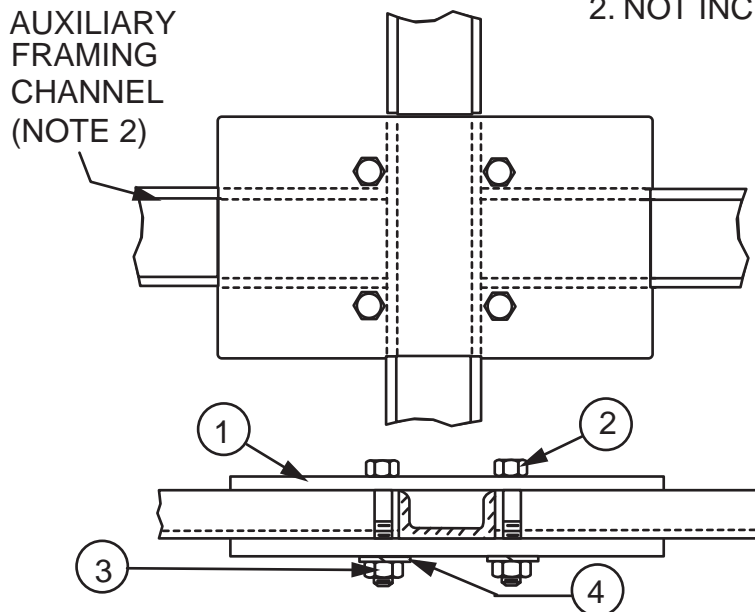
NOTES:

- 1. FINISH IS ZINC PLATED AND GOLD CHROMATE.
- 2. NOT INCLUDED; REFER TO FIG. 001002.

ORDERING NUMBER: 0010050010

SPLICING 2" X 1" X 3/16" AUXILIARY CHANNEL

FIG. 001005



NOTES:

- 1. FINISH IS ZINC PLATED AND GOLD CHROMATE.
- 2. NOT INCLUDED; REFER TO FIG. 001002.

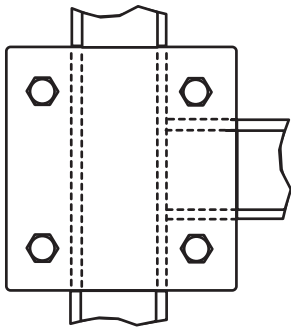
STOCK LIST

ITEM	QTY	DESCRIPTION
1	2	PLATE
2	4	3/8-16 X 2 HHCS
3	4	3/8-16 NUT
4	4	LOCK WASHER

JUNCTIONING 2" X 1" X 3/16" AUXILIARY CHANNEL AT RIGHT ANGLES

ORDERING NUMBER: 0010060010

FIG. 001006

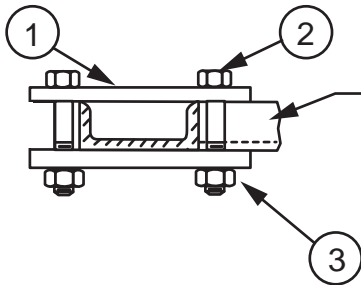


STOCK LIST

ITEM	QTY.	DESCRIPTION
1	2	JUNCTIONING PLATE
2	4	3/8-16 X 2" HHCS
3	4	3/8-16 HEAVY HEX NUT

NOTES:

1. FINISH IS ZINC PLATED AND GOLD CHROMATE.
2. NOT INCLUDED; REFER TO FIG. 001002.

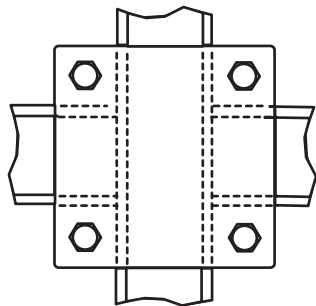


AUXILIARY FRAMING CHANNEL (NOTE 2)

ORDERING NUMBER: 0010070010

2" X 1" X 3/16" AUXILIARY CHANNEL "T" JUNCTION

FIG. 001007

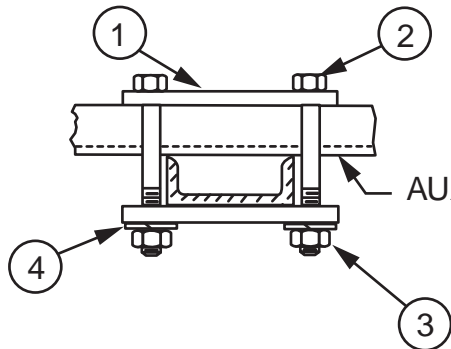


STOCK LIST

ITEM	QTY.	DESCRIPTION
1	2	JUNCTIONING PLATE
2	4	3/8-16 X 3" HHCS
3	4	3/8-16 HEAVY HEX NUT
4	4	SPRING LOCK WASHER

NOTES:

1. FINISH IS ZINC PLATED AND GOLD CHROMATE.
2. NOT INCLUDED; REFER TO FIG. 001002.



AUXILIARY FRAMING CHANNEL (NOTE 2)

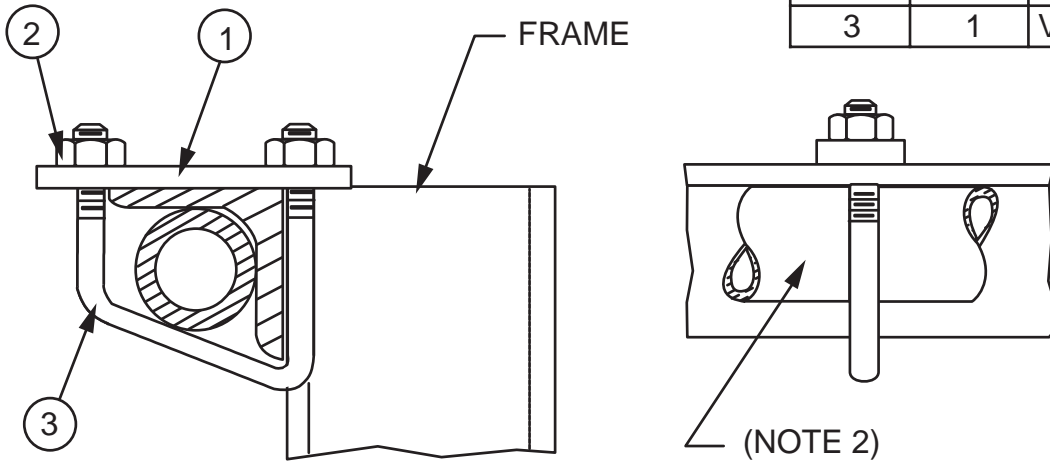
ORDERING NUMBER: 0010080010

2" X 1" X 3/16" AUXILIARY CHANNEL CROSSOVER JUNCTION

FIG. 001008

STOCK LIST

ITEM	QTY	DESCRIPTION
1	1	PLATE
2	2	3/8-16 NUT
3	1	V-BOLT



NOTES:

1. FINISH IS ZINC PLATED AND GOLD CHROMATE.
2. PIPE NOT INCLUDED; REFER TO FIG. 003037.

ORDERING NUMBER: 0010120010

FASTENING FRAME TOP ANGLE TO AUXILIARY PIPE

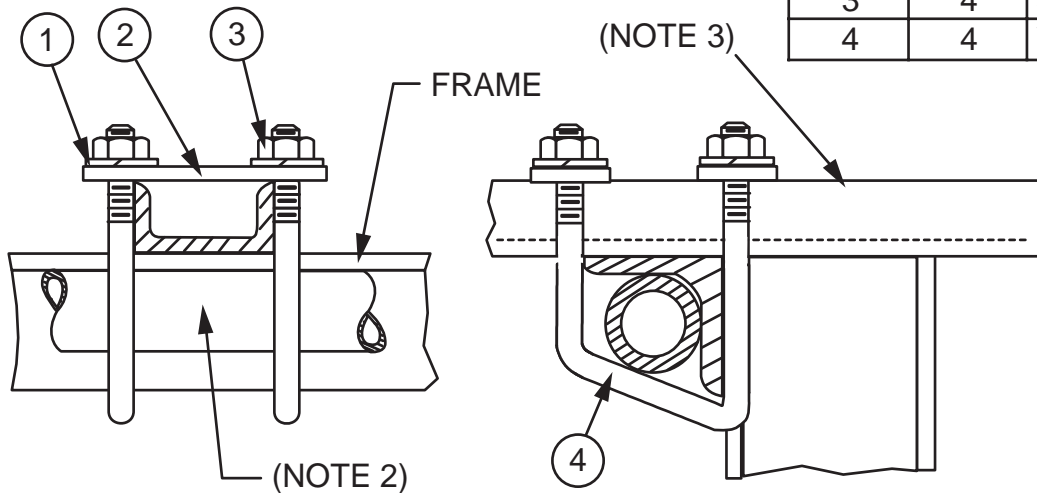
FIG. 001012

NOTES:

1. FINISH IS ZINC PLATED AND GOLD CHROMATE.
2. PIPE NOT INCLUDED; REFER TO FIG. 003037.
3. NOT INCLUDED; REFER TO FIG. 001002.

STOCK LIST

ITEM	QTY	DESCRIPTION
1	2	3/8 LOCK WASHER
2	4	PLATE
3	4	3/8-16 NUT
4	4	V-BOLT



FASTENING FRAME TOP ANGLE TO
2" X 1" X 3/16" AUXILIARY CHANNEL

ORDERING NUMBER: 0010130010

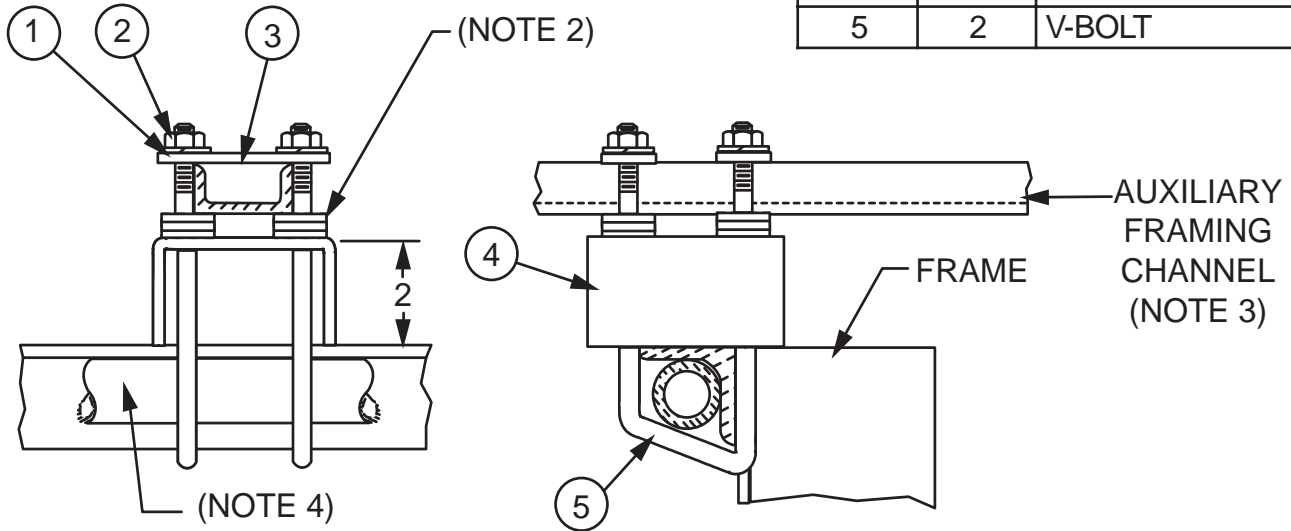
FIG. 001013

NOTES:

- 1. XX = FINISH CODE; STANDARD FINISH, XX = 30.
- 2. NOT INCLUDED; REFER TO FIG. 003016-6.
- 3. NOT INCLUDED; REFER TO FIG. 001002.
- 4. NOT INCLUDED; REFER TO FIG. 003037.

STOCK LIST

ITEM	QTY	DESCRIPTION
1	4	3/8 LOCK WASHER
2	4	3/8-16 NUT
3	2	PLATE
4	1	CHANNEL SPACER
5	2	V-BOLT



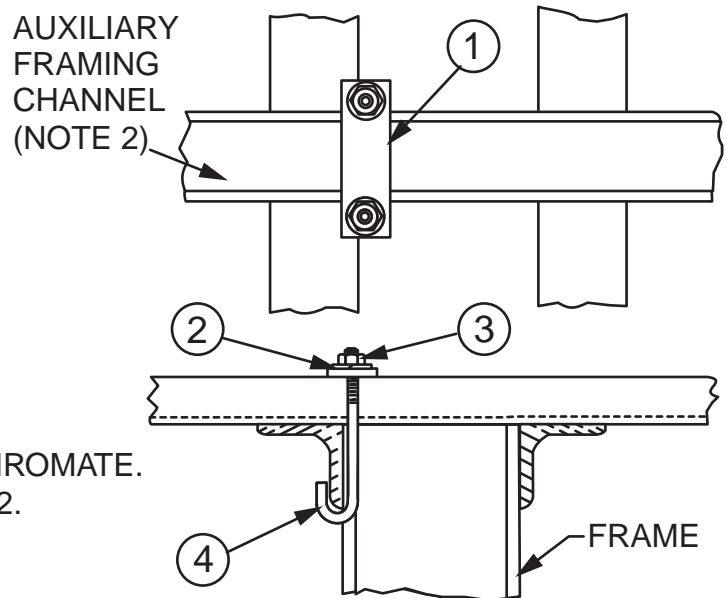
FASTENING FRAME TOP ANGLE TO 2" X 1" X 3/16" AUXILIARY CHANNEL WITH 2" SPACER BETWEEN

ORDERING NUMBER: 00101400XX

FIG. 001014

STOCK LIST

ITEM	QTY	DESCRIPTION
1	1	PLATE
2	2	5/16 LOCK WASHER
3	2	5/16-18 NUT
4	2	J-BOLT



NOTES:

- 1. FINISH IS ZINC PLATED AND GOLD CHROMATE.
- 2. NOT INCLUDED; REFER TO FIG. 001002.

FASTENING 2" X 1" X 3/16" AUXILIARY CHANNEL TO TOP ANGLE OF FRAME

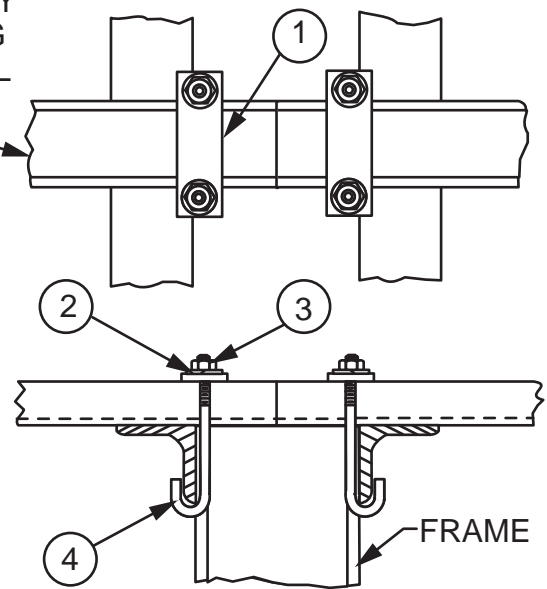
ORDERING NUMBER: 0010150010

FIG. 001015

STOCK LIST

ITEM	QTY	DESCRIPTION
1	2	PLATE
2	4	5/16 LOCK WASHER
3	4	5/16-18 NUT
4	4	J-BOLT

AUXILIARY FRAMING CHANNEL (NOTE 2)



NOTES:

1. FINISH IS ZINC PLATED AND GOLD CHROMATE.
2. NOT INCLUDED; REFER TO FIG. 001002.

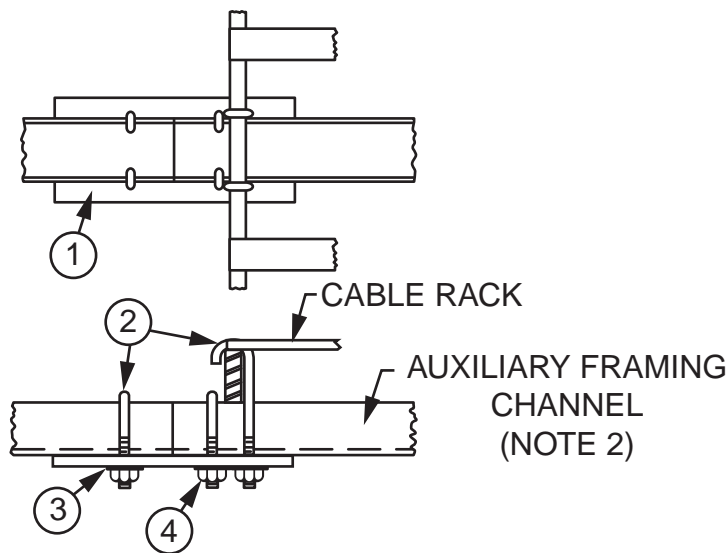
JUNCTIONING 2" X 1" X 3/16" AUXILIARY CHANNEL BETWEEN TOP ANGLES OF FRAME

ORDERING NUMBER: 0010160010

FIG. 001016

STOCK LIST

ITEM	QTY	DESCRIPTION
1	1	JUNCTIONING PLATE
2	6	J-BOLT
3	6	SPRING LOCK WASHER
4	6	1/4-20 HEAVY HEX NUT



NOTES:

1. FINISH IS ZINC PLATED AND GOLD CHROMATE.
2. NOT INCLUDED; REFER TO FIG. 001002.

SUPPORTING CABLE RACK OVER 2" X 1" X 3/16" AUXILIARY CHANNEL SPLICE

ORDERING NUMBER: 0010170010

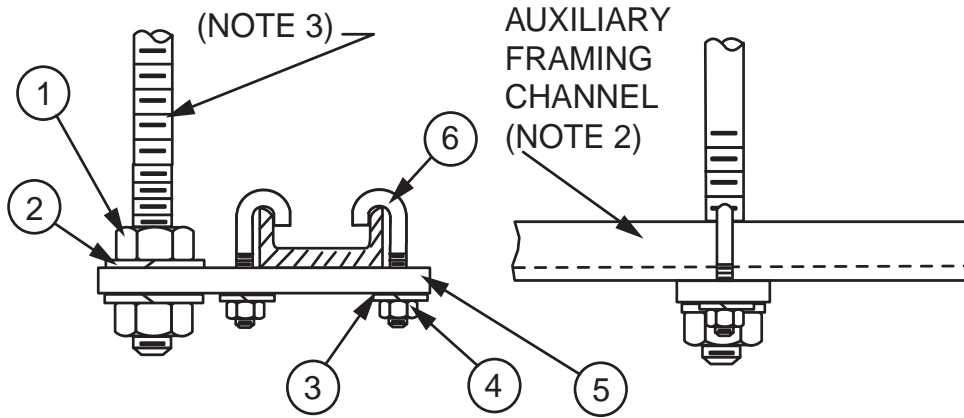
FIG. 001017

NOTES:

- 1. FINISH IS ZINC PLATED AND GOLD CHROMATE.
- 2. NOT INCLUDED; REFER TO FIG. 001002.
- 3. NOT INCLUDED; REFER TO FIG. 003022.

STOCK LIST

ITEM	QTY	DESCRIPTION
1	2	HEAVY HEX NUT, 1/4-20
2	4	SPRING LOCK WASHER
3	2	HEAVY HEX NUT, 5/8-11
4	1	SUPPORT PLATE



SUPPORTING 2" X 1" X 3/16" AUXILIARY CHANNEL WITH THREADED ROD

ORDERING NUMBER: 0010180010

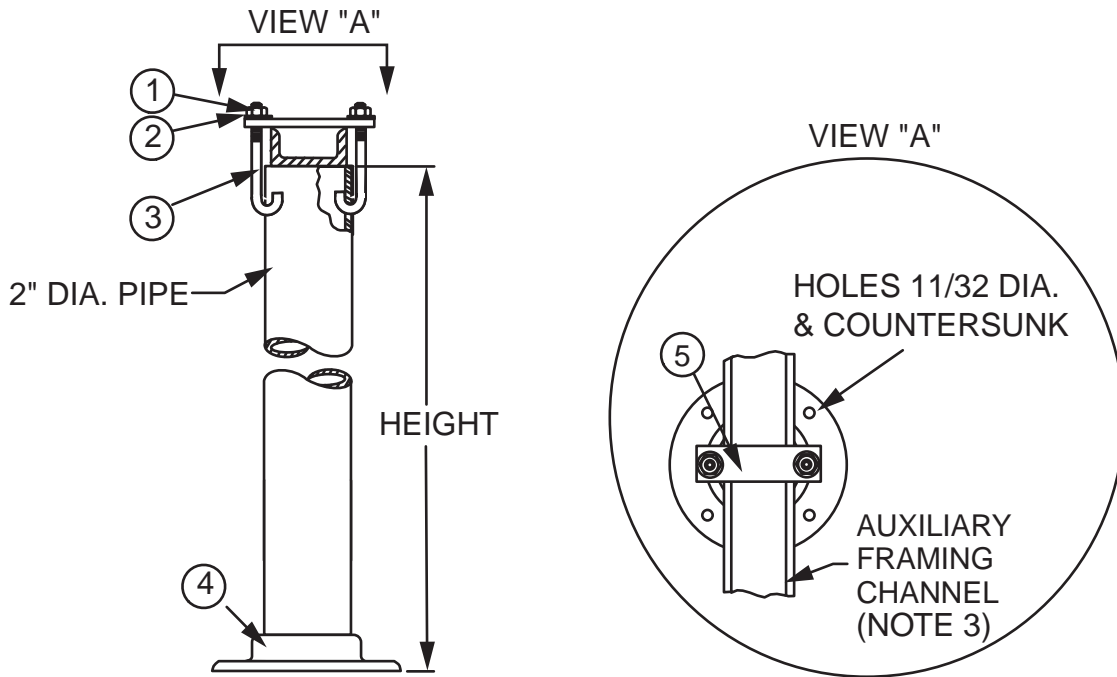
FIG. 001018

ORDERING TABLE

ORDERING NO.	HEIGHT
00101901XX	7'
00101902XX	7'-6"
00101903XX	8'
00101904XX	9'
00101905XX	11'-6"
00101906XX	11'-8"

STOCK LIST

ITEM	QTY	DESCRIPTION
1	2	1/4-20 NUT
2	2	1/4 LOCK WASHER
3	2	J-BOLT
4	1	FLOOR FLANGE
5	1	PLATE
6	1	PIPE (NOTE 2)



NOTES:

1. XX = FINISH CODE; STANDARD FINISH, XX = 30.
2. REFER TO ORDERING TABLE FOR PIPE HEIGHTS AVAILABLE.
3. NOT INCLUDED; REFER TO FIG. 001002.

SUPPORTING AUXILIARY CHANNEL FROM FLOOR WITH 2" PIPE STAND

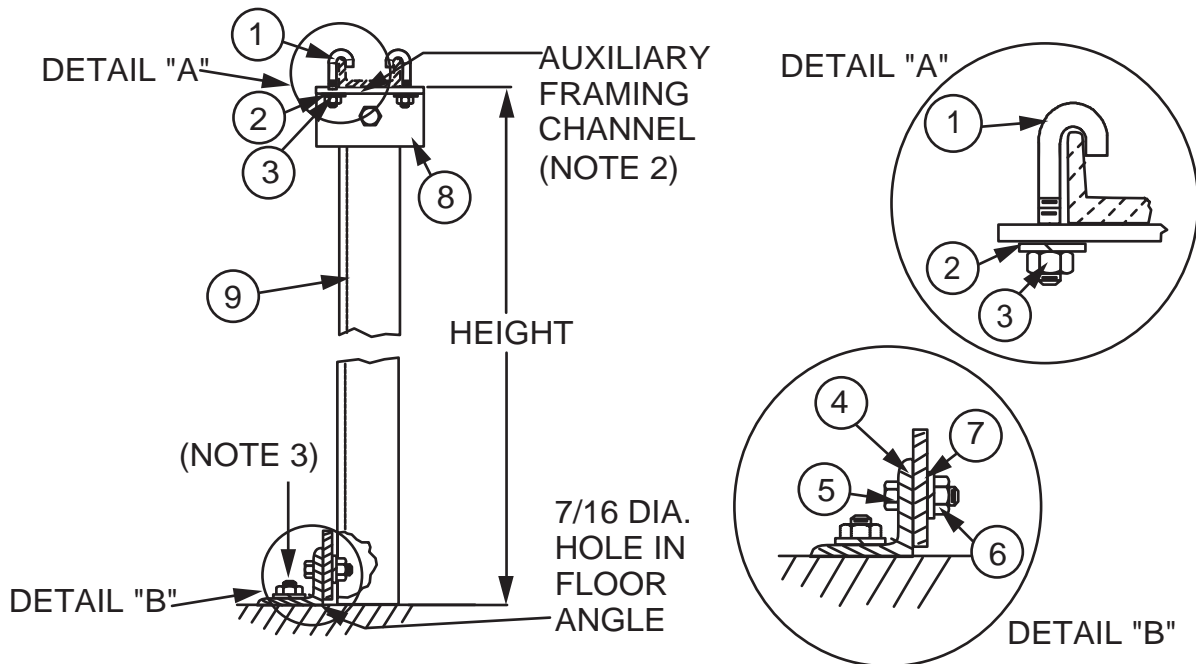
ORDERING NUMBER: REFER TO TABLE
FIG. 001019

ORDERING TABLE

ORDERING NO.	HEIGHT
00102001XX	7'
00102002XX	7'-6"
00102003XX	8'
00102004XX	9'
00102005XX	11'-6"
00102006XX	11'-8"

STOCK LIST

ITEM	QTY	DESCRIPTION
1	2	J-BOLT
2	2	1/4 LOCK WASHER
3	2	1/4-20 NUT
4	1	BOTTOM ANGLE
5	2	3/8-16 X 1 HHCS
6	2	3/8-16 NUT
7	2	3/8 LOCK WASHER
8	1	TOP ANGLE
9	1	SUPPORT ANGLE

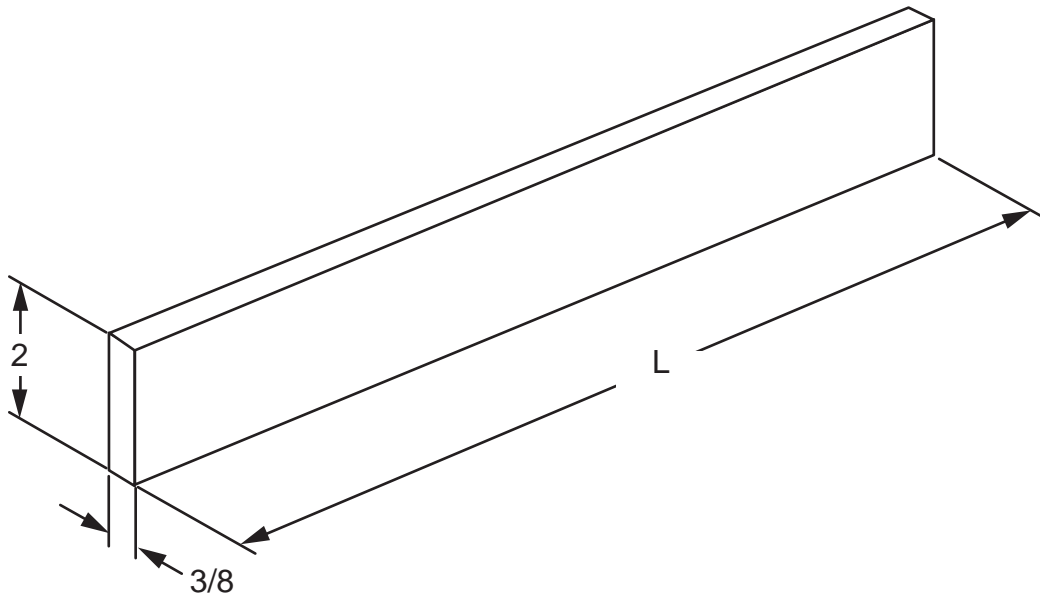


NOTES:

1. XX = FINISH CODE; STANDARD FINISH, XX = 30.
2. NOT INCLUDED; REFER TO FIG. 001002.
3. NOT INCLUDED; REFER TO HARDWARE SECTION FOR VARIOUS METHODS OF ATTACHMENT.

SUPPORTING AUXILIARY CHANNEL
FROM FLOOR WITH SUPPORT ANGLE

ORDERING NUMBER: REFER TO TABLE
FIG. 001020



ORDERING TABLE

ORDERING NO.	LENGTH
00102101XX	2'
00102102XX	4'
00102103XX	6'
00102104XX	8'
00102105XX	10'
00102106XX	12'
00102107XX	14'
00102108XX	16'
00102109XX	18'
00102110XX	20'

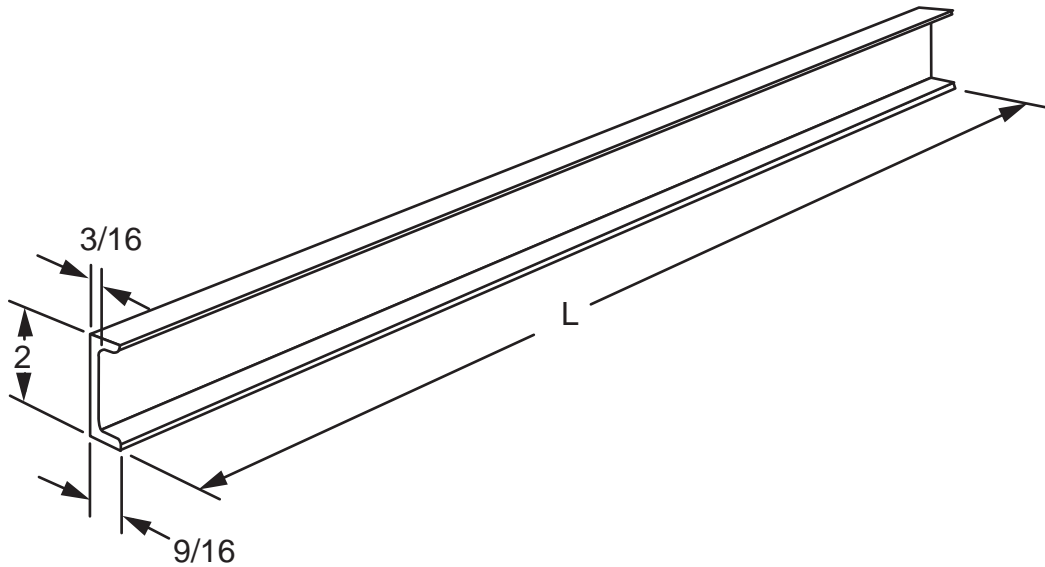
NOTES:

1. XX = FINISH CODE; STANDARD FINISH, XX = 30.
2. MATERIAL: HOT ROLLED STEEL.

ORDERING NUMBER: REFER TO TABLE

PARALLEL AUXILIARY FRAMING BAR, 2" X 3/8"

FIG. 001021



ORDERING TABLE

ORDERING NO.	LENGTH
00102201XX	2'
00102202XX	4'
00102203XX	6'
00102204XX	8'
00102205XX	10'
00102206XX	12'
00102207XX	14'
00102208XX	16'
00102209XX	18'
00102210XX	20'

NOTES:

1. XX = FINISH CODE; STANDARD FINISH, XX = 30.
2. MATERIAL: HOT ROLLED STEEL.

ORDERING NUMBER: REFER TO TABLE

PARALLEL AUXILIARY FRAMING CHANNEL, 2" X 9/16" X 3/16"

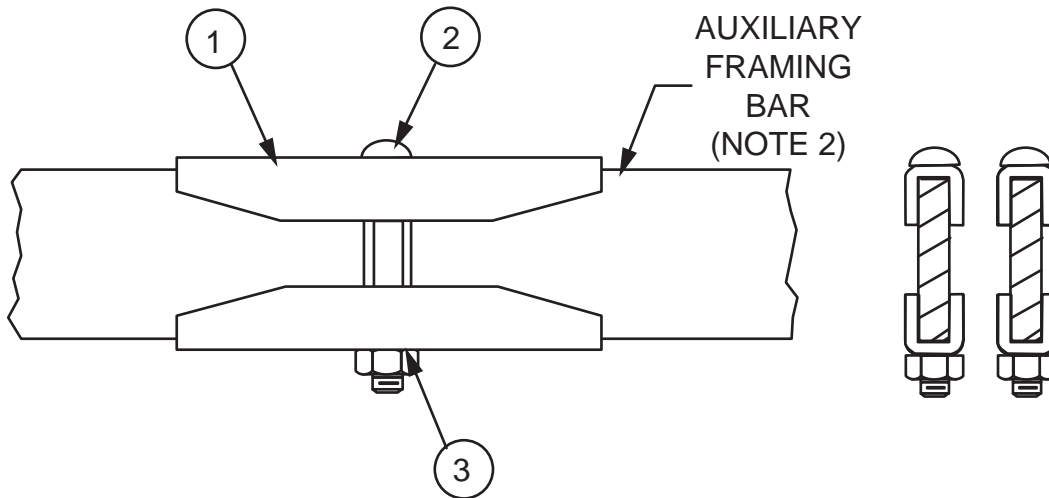
FIG. 001022

STOCK LIST

ITEM	QTY	DESCRIPTION
1	4	SPLICE CLAMP
2	2	3/8-16 X 2-3/4 BOLT
3	2	3/8-16 NUT

NOTES:

1. FINISH IS ZINC PLATED AND GOLD CHROMATE.
2. NOT INCLUDED; REFER TO FIG. 001021.



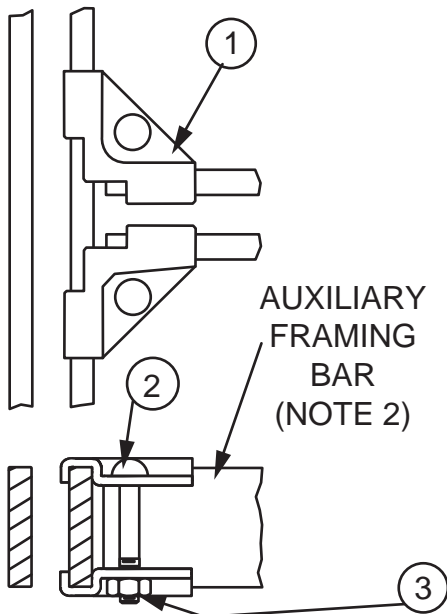
ORDERING NUMBER: 0010230010

AUXILIARY FRAMING JUNCTION WITH STRAIGHT CLAMPS

FIG. 001023

STOCK LIST

ITEM	QTY	DESCRIPTION
1	4	SPLICE CLAMP
2	2	3/8-16 X 2 BOLT
3	2	3/8-16 NUT



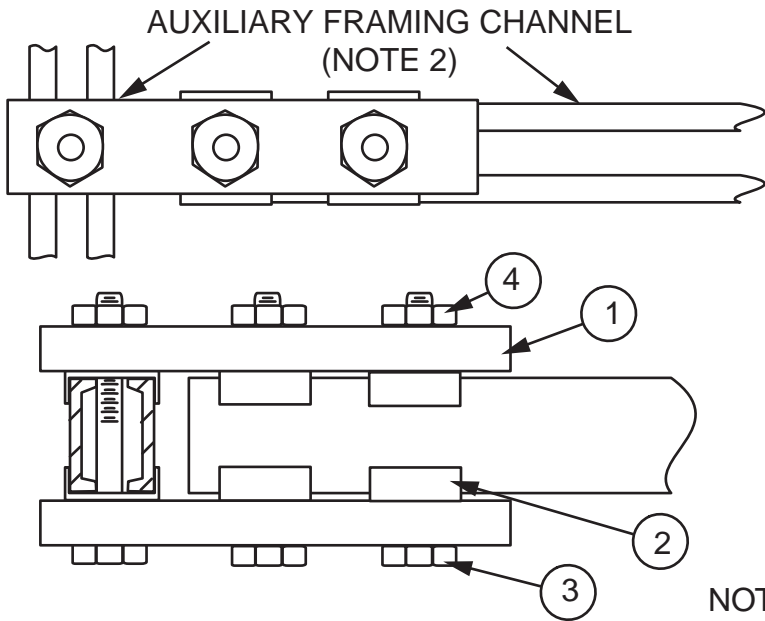
NOTES:

1. FINISH IS ZINC PLATED AND GOLD CHROMATE.
2. NOT INCLUDED; REFER TO FIG. 001021.

ORDERING NUMBER: 0010240010

AUXILIARY FRAME "T" JUNCTION WITH CORNER CLAMPS

FIG. 001024



STOCK LIST

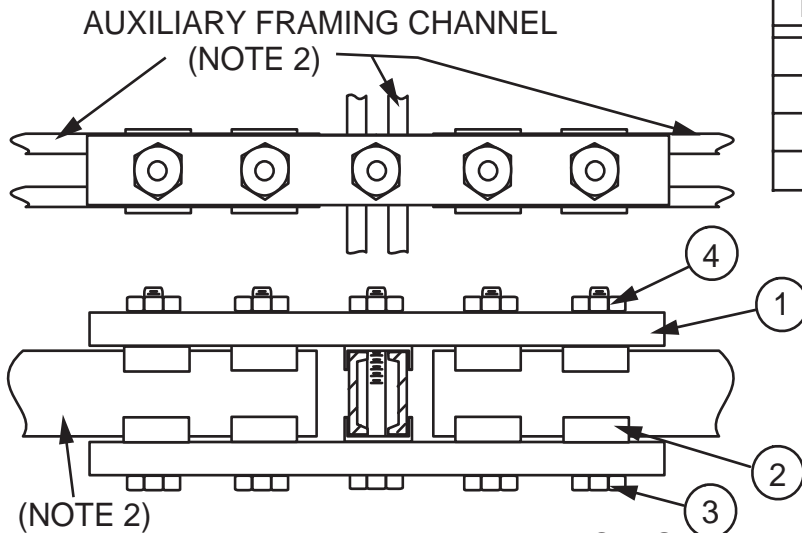
ITEM	QTY	DESCRIPTION
1	2	SPLICE BAR
2	6	CLIP
3	3	5/8-11 X 3-3/4 HHCS
4	3	5/8-11 HEX NUT

- NOTES:
 1. FINISH IS ZINC PLATED AND GOLD CHROMATE.
 2. NOT INCLUDED; REFER TO FIG. 001022.

PARALLEL AUXILIARY FRAMING CHANNEL
 "T" JUNCTION WITH SPLICE BAR

ORDERING NUMBER: 0010240110

FIG. 001024



STOCK LIST

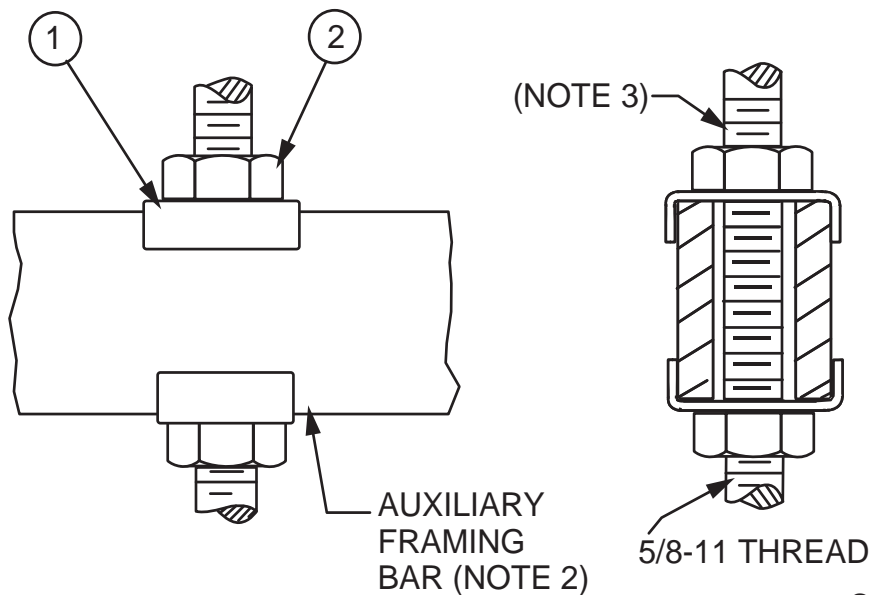
ITEM	QTY	DESCRIPTION
1	2	SPLICE BAR
2	10	CLIP
3	5	5/8-11 X 3 HHCS
4	6	5/8-11 HEX NUT

- NOTES:
 1. FINISH IS ZINC PLATED AND GOLD CHROMATE.
 2. NOT INCLUDED; REFER TO FIG. 001022.

PARALLEL AUXILIARY FRAMING CHANNEL
 "X" JUNCTION WITH SPLICE BAR

ORDERING NUMBER: 0010240210

FIG. 001024



NOTES:

- 1. FINISH IS ZINC PLATED AND GOLD CHROMATE.
- 2. NOT INCLUDED; REFER TO FIG. 001021.
- 3. NOT INCLUDED; REFER TO FIG. 003022.

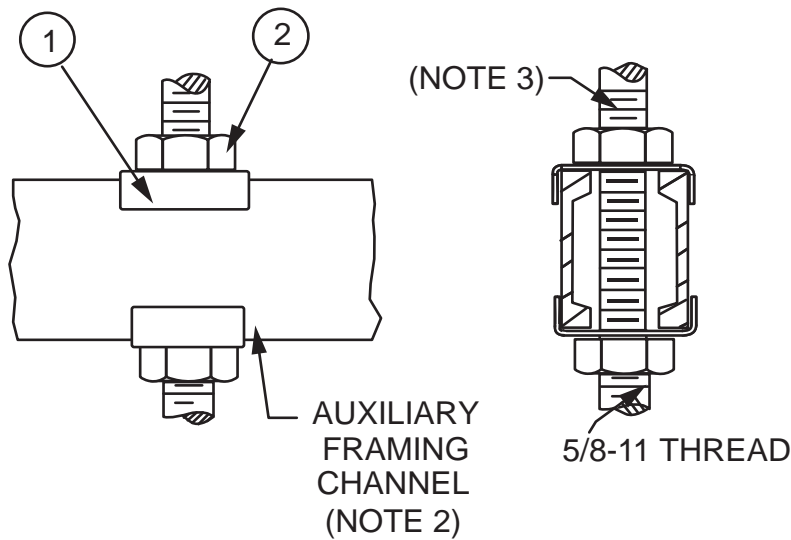
STOCK LIST

ITEM	QTY	DESCRIPTION
1	1	PLATE
2	2	3/8-16 NUT

SUPPORTING PARALLEL AUXILIARY FRAMING BAR FROM THREADED ROD

ORDERING NUMBER: 0010250010

FIG. 001025



NOTES:

- 1. FINISH IS ZINC PLATED AND GOLD CHROMATE.
- 2. NOT INCLUDED; REFER TO FIG. 001021.
- 3. NOT INCLUDED; REFER TO FIG. 003022.

STOCK LIST

ITEM	QTY	DESCRIPTION
1	1	PLATE
2	2	3/8-16 NUT

SUPPORTING PARALLEL AUXILIARY FRAMING CHANNEL FROM THREADED ROD

ORDERING NUMBER: 0010250110

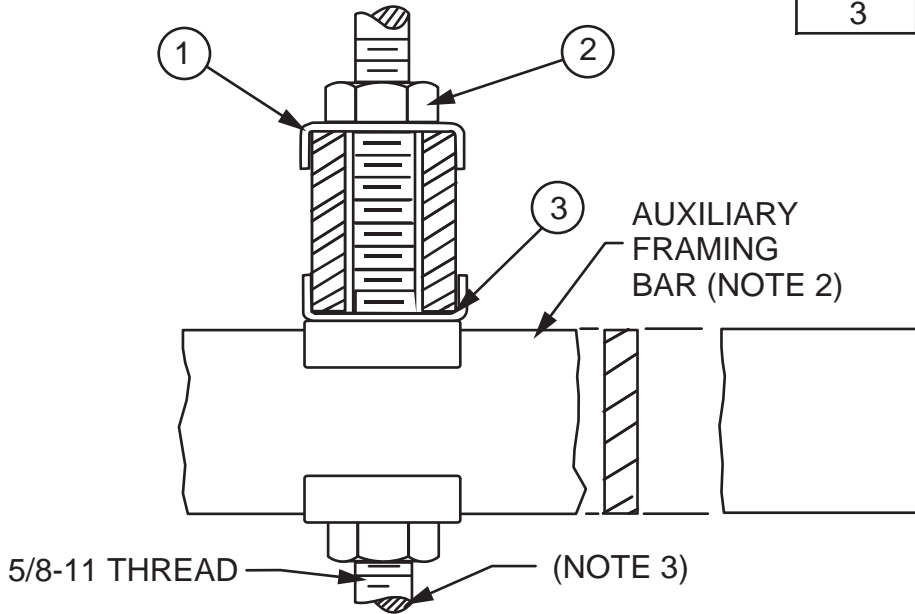
FIG. 001025

NOTES:

- 1. FINISH IS ZINC PLATED AND GOLD CHROMATE.
- 2. NOT INCLUDED; REFER TO FIG. 001021.
- 3. NOT INCLUDED; REFER TO FIG. 003022.

STOCK LIST

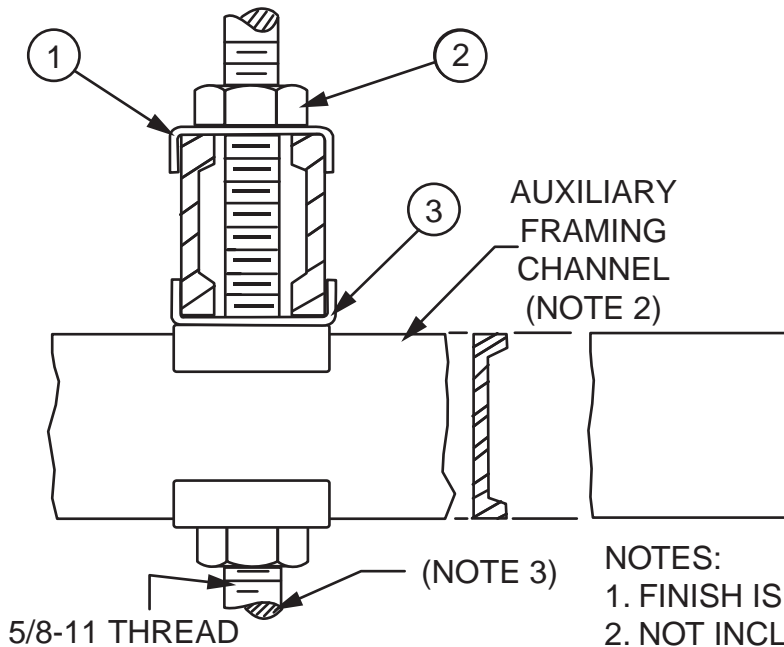
ITEM	QTY	DESCRIPTION
1	2	CLIP
2	2	5/8-11 NUT
3	1	CLIP



SUPPORTING AUXILIARY FRAMING BAR
CROSS-OVER FROM THREADED ROD

ORDERING NUMBER: 0010260010

FIG. 001026



SUPPORTING PARALLEL AUXILIARY FRAMING
CHANNEL CROSS-OVER FROM THREADED ROD

STOCK LIST

ITEM	QTY	DESCRIPTION
1	2	CLIP
2	2	5/8-11 NUT
3	1	CLIP

NOTES:

- 1. FINISH IS ZINC PLATED AND GOLD CHROMATE.
- 2. NOT INCLUDED; REFER TO FIG. 001021.
- 3. NOT INCLUDED; REFER TO FIG. 003022.

ORDERING NUMBER: 0010260110

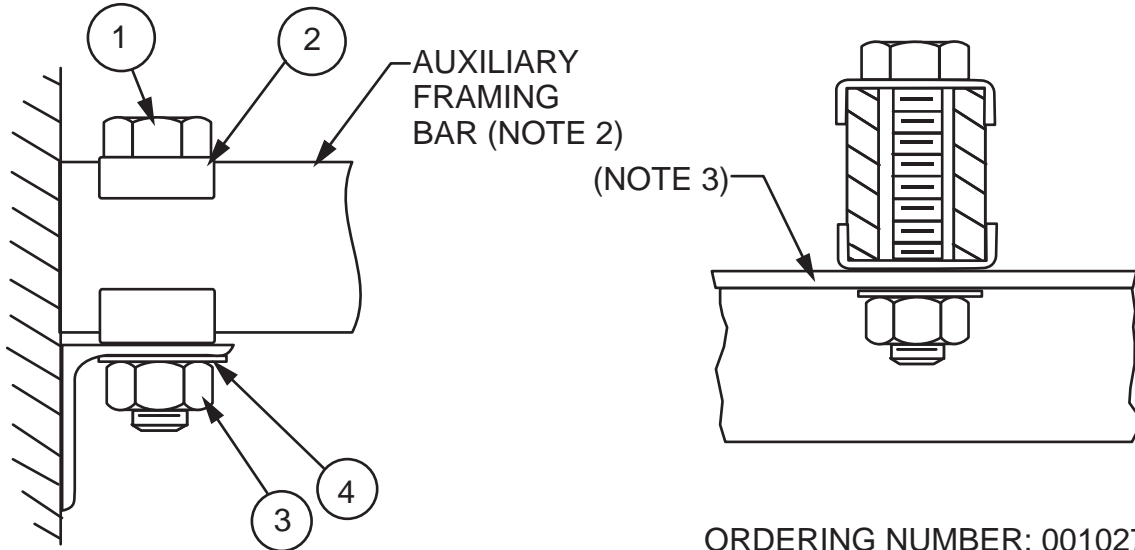
FIG. 001026

NOTES:

- 1. FINISH IS ZINC PLATED AND GOLD CHROMATE.
- 2. NOT INCLUDED; REFER TO FIG. 001021.
- 3. NOT INCLUDED; REFER TO HARDWARE SECTION FOR VARIOUS WALL ANGLES AVAILABLE.

STOCK LIST

ITEM	QTY	DESCRIPTION
1	2	1/2-13 X 3 HHCS
2	2	CLIP
3	1	1/2-13 NUT
4	1	1/2 LOCK WASHER



MOUNTING AUXILIARY FRAMING TO WALL ANGLE

ORDERING NUMBER: 0010270010

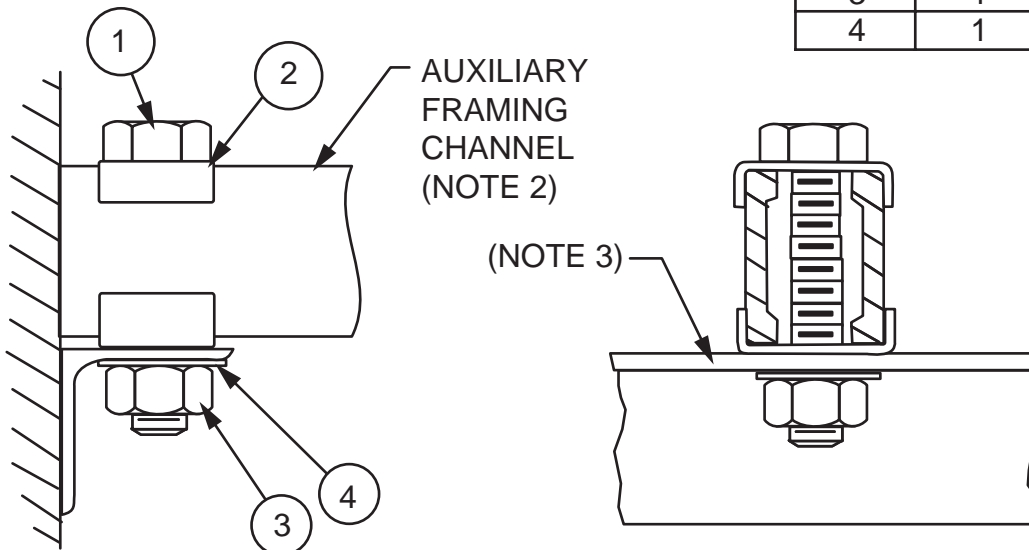
FIG. 001027

NOTES:

- 1. FINISH IS ZINC PLATED AND GOLD CHROMATE.
- 2. NOT INCLUDED; REFER TO FIG. 001022.
- 3. NOT INCLUDED; REFER TO HARDWARE SECTION FOR VARIOUS WALL ANGLES AVAILABLE.

STOCK LIST

ITEM	QTY	DESCRIPTION
1	2	1/2-13 X 3 HHCS
2	2	CLIP
3	1	1/2-13 NUT
4	1	1/2 LOCK WASHER



MOUNTING PARALLEL AUXILIARY FRAMING CHANNEL TO WALL ANGLE

ORDERING NUMBER: 0010270110

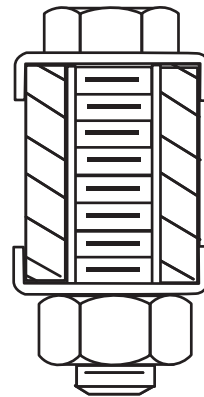
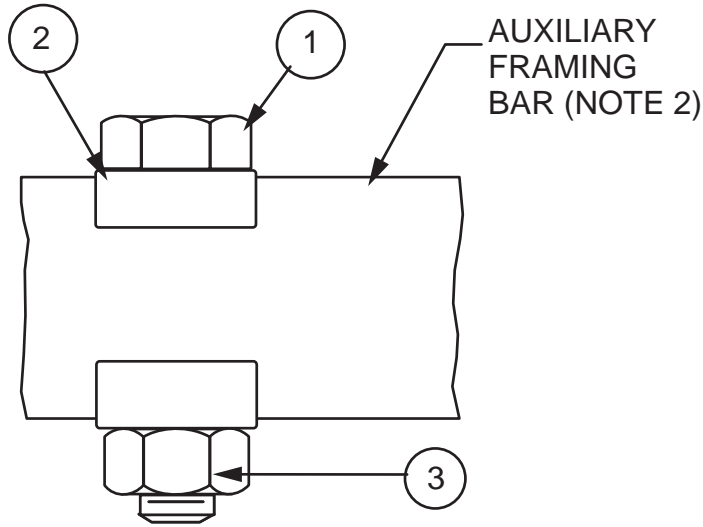
FIG. 001027

NOTES:

- 1. FINISH IS ZINC PLATED AND GOLD CHROMATE.
- 2. NOT INCLUDED; REFER TO FIG. 001021.

STOCK LIST

ITEM	QTY	DESCRIPTION
1	2	1/2-13 X 2-3/4 HHCS
2	2	CLIP
3	1	1/2-13 NUT



ORDERING NUMBER: 0010280010

AUXILIARY FRAMING BAR FINISHING CLIP

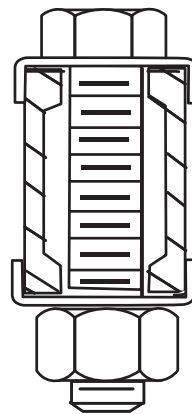
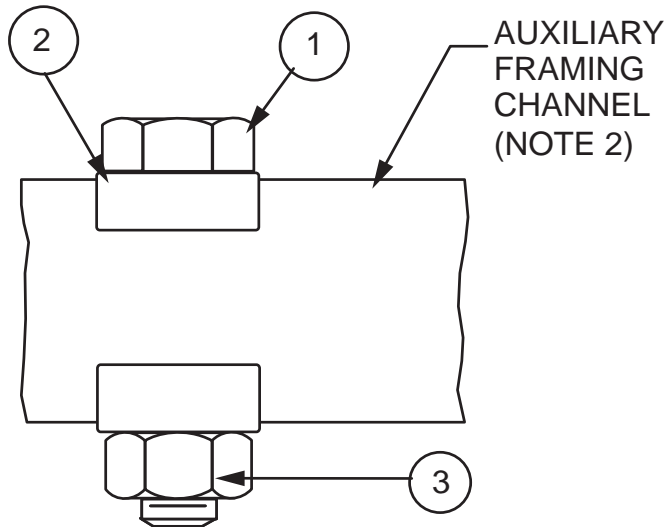
FIG. 001028

NOTES:

- 1. FINISH IS ZINC PLATED AND GOLD CHROMATE.
- 2. NOT INCLUDED; REFER TO FIG. 001022.

STOCK LIST

ITEM	QTY	DESCRIPTION
1	2	1/2-13 X 2-3/4 HHCS
2	2	CLIP
3	1	1/2-13 NUT



ORDERING NUMBER: 0010280110

PARALLEL AUXILIARY FRAMING CHANNEL FINISHING CLIP

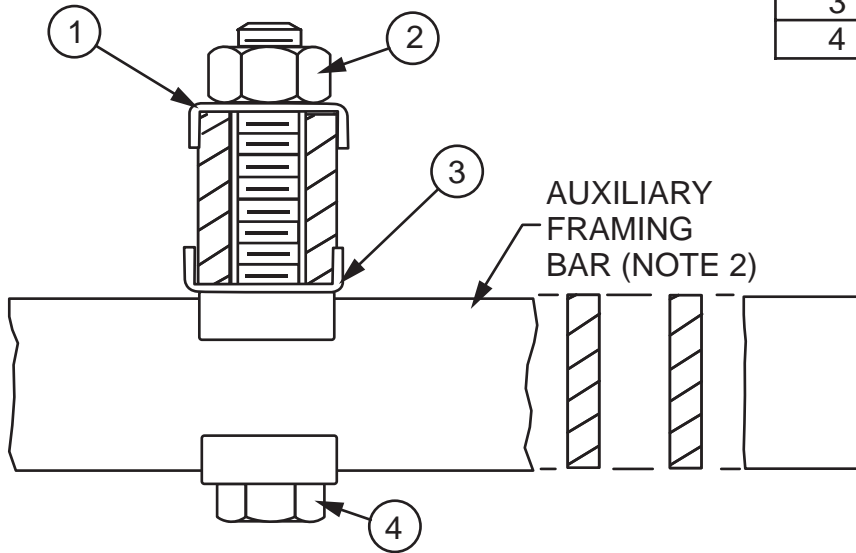
FIG. 001028

NOTES:

- 1. FINISH IS ZINC PLATED AND GOLD CHROMATE.
- 2. NOT INCLUDED; REFER TO FIG. 001021.

STOCK LIST

ITEM	QTY	DESCRIPTION
1	2	CLIP
2	1	5/8-11 NUT
3	1	CLIP
4	1	5/8-11 X 5 HHCS



CONNECTING AUXILIARY FRAMING BAR ACROSS
AUXILIARY FRAMING BAR

ORDERING NUMBER: 0010290010

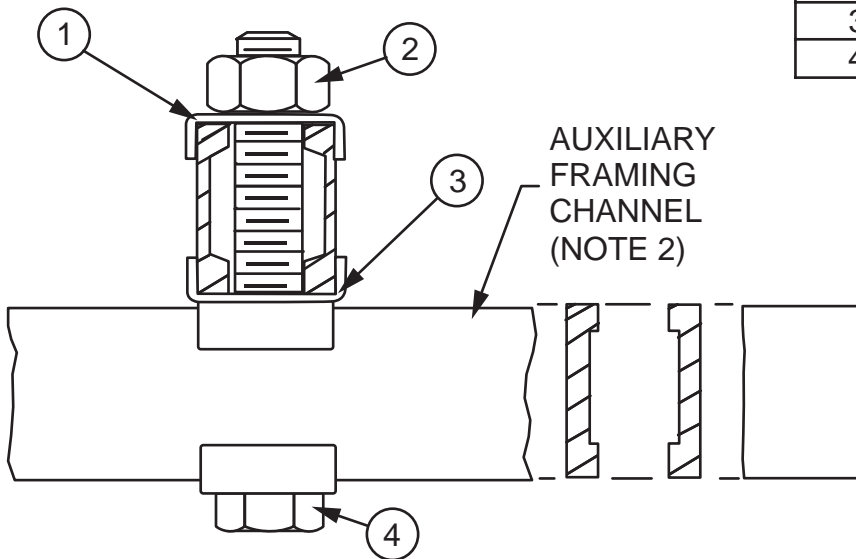
FIG. 001029

NOTES:

- 1. FINISH IS ZINC PLATED AND GOLD CHROMATE.
- 2. NOT INCLUDED; REFER TO FIG. 001022.

STOCK LIST

ITEM	QTY	DESCRIPTION
1	2	CLIP
2	1	5/8-11 NUT
3	1	CLIP
4	1	5/8-11 X 5 HHCS



CONNECTING PARALLEL AUXILIARY FRAMING
CHANNEL ACROSS AUXILIARY FRAMING CHANNEL

ORDERING NUMBER: 0010290110

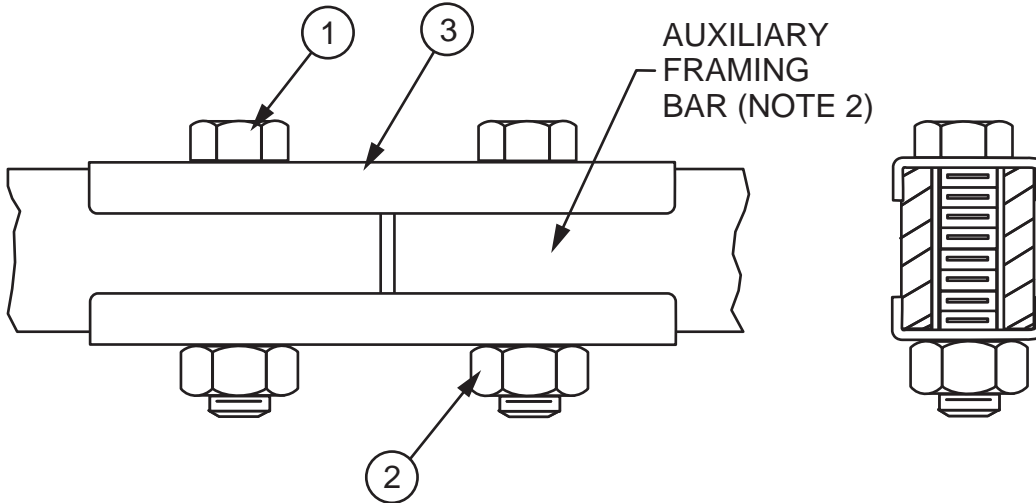
FIG. 001029

NOTES:

- 1. FINISH IS ZINC PLATED AND GOLD CHROMATE.
- 2. NOT INCLUDED; REFER TO FIG. 001021.

STOCK LIST

ITEM	QTY	DESCRIPTION
1	2	5/8-11 X 3 BOLT
2	2	5/8-11 NUT
3	2	CLAMP



ORDERING NUMBER: 0010300010

SPLICING AUXILIARY FRAMING BAR

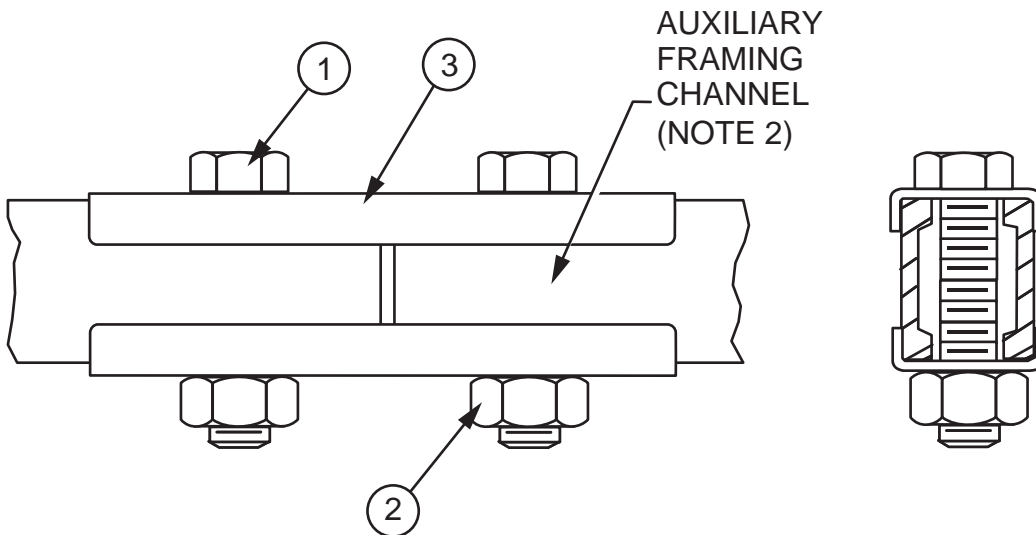
FIG. 001030

NOTES:

- 1. FINISH IS ZINC PLATED AND GOLD CHROMATE.
- 2. NOT INCLUDED; REFER TO FIG. 001022.

STOCK LIST

ITEM	QTY	DESCRIPTION
1	2	5/8-11 X 3 BOLT
2	2	5/8-11 NUT
3	2	CLAMP



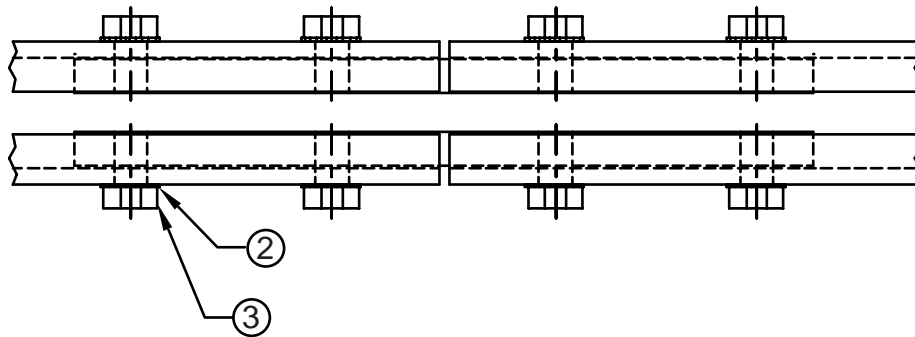
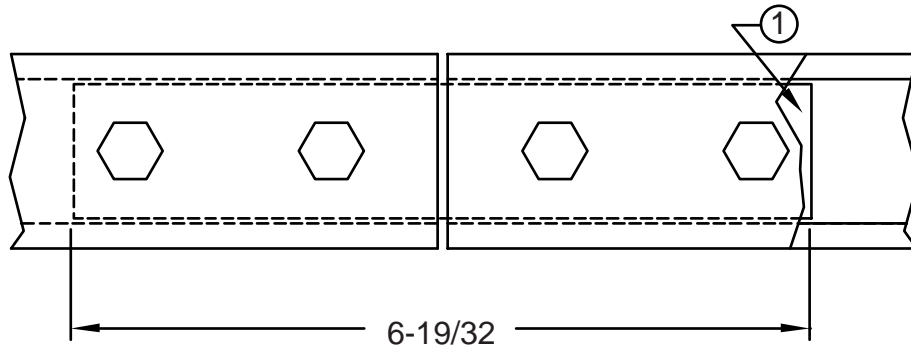
ORDERING NUMBER: 0010300110

SPLICING PARALLEL AUXILIARY FRAMING CHANNEL

FIG. 001030

STOCK LIST

ITEM	QTY	DESCRIPTION
1	2	SPLICE BAR
2	8	3/8 EXT. LOCK WASHER
3	8	3/8-16 X 5/8 HHCS



NOTES:

1. FINISH IS ZINC PLATED AND GOLD CHROMATE.

ORDERING NUMBER: 2139930010

AUXILIARY FRAMING SPLICE KIT

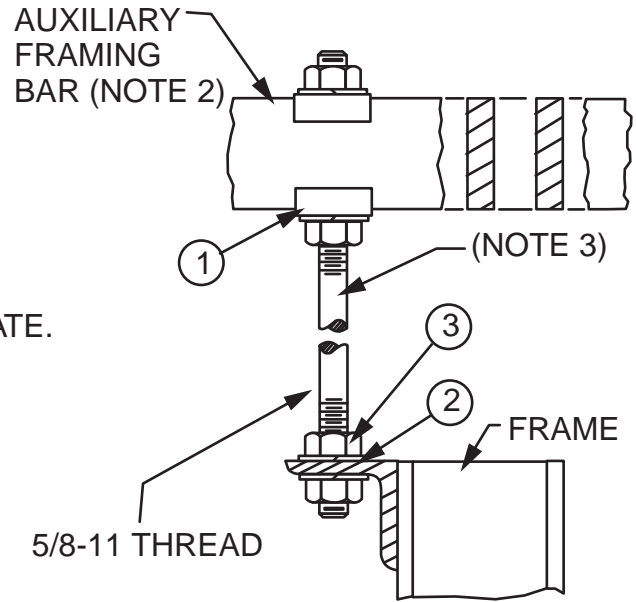
FIG. 213993

STOCK LIST

ITEM	QTY	DESCRIPTION
1	2	CLIP
2	4	5/8 LOCK WASHER
3	4	5/8-11 NUT

NOTES:

1. FINISH IS ZINC PLATED AND GOLD CHROMATE.
2. NOT INCLUDED; REFER TO FIG. 001021.
3. NOT INCLUDED; REFER TO FIG. 003022.



ORDERING NUMBER: 0010320010

SUPPORTING FRAME FROM AUXILIARY FRAMING BAR

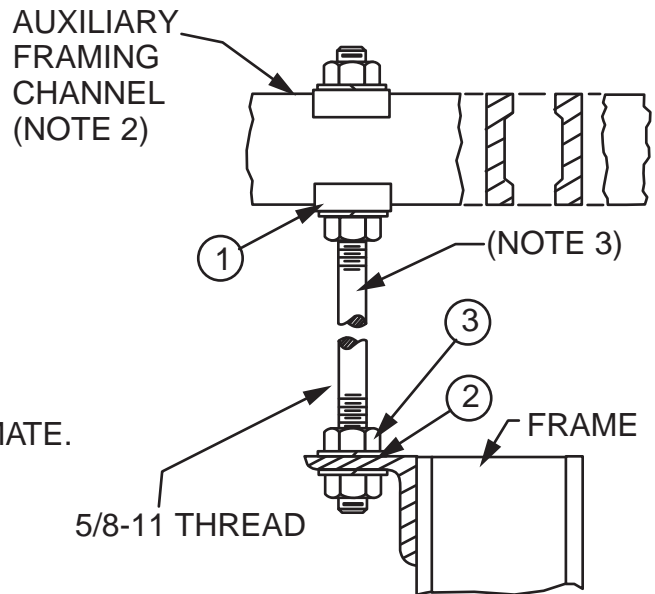
FIG. 001032

STOCK LIST

ITEM	QTY	DESCRIPTION
1	2	CLIP
2	4	5/8 LOCK WASHER
3	4	5/8-11 NUT

NOTES:

1. FINISH IS ZINC PLATED AND GOLD CHROMATE.
2. NOT INCLUDED; REFER TO FIG. 001022.
3. NOT INCLUDED; REFER TO FIG. 003022.



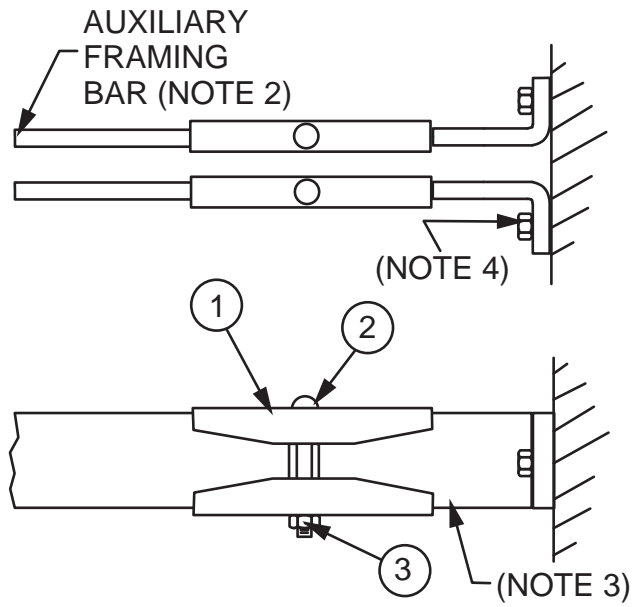
ORDERING NUMBER: 0010320110

SUPPORTING FRAME FROM PARALLEL AUXILIARY FRAMING CHANNEL

FIG. 001032

NOTES:

- 1. FINISH IS ZINC PLATED AND GOLD CHROMATE.
- 2. NOT INCLUDED; REFER TO FIG. 001021.
- 3. NOT INCLUDED; REFER TO FIG. 001048.
- 4. NOT INCLUDED; REFER TO HARDWARE SECTION FOR VARIOUS OPTIONS AVAILABLE.



STOCK LIST

ITEM	QTY	DESCRIPTION
1	2	SPLICE CLAMP
2	4	3/8-16 X 2-3/4 BOLT
3	4	3/8-16 NUT

ORDERING NUMBER: 0010330010

JUNCTIONING AUXILIARY FRAMING BAR AT WALL

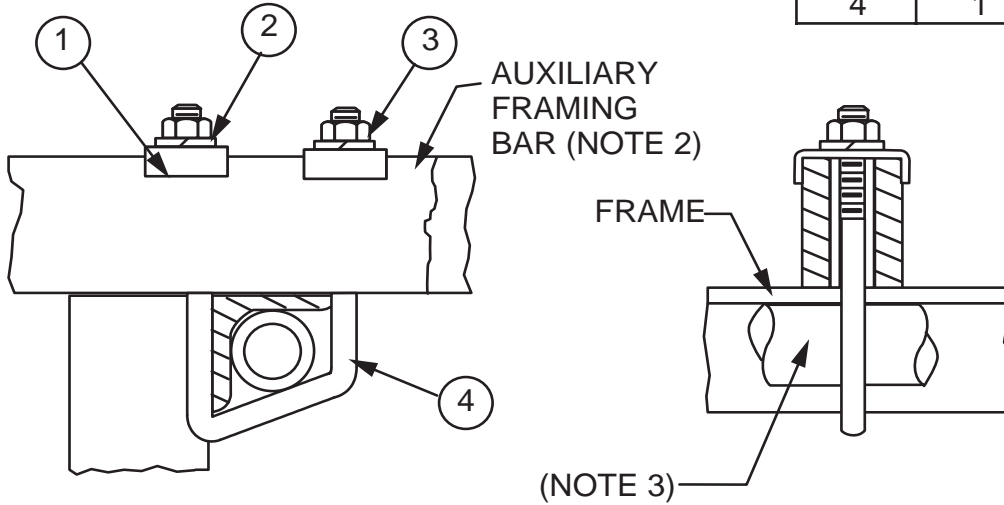
FIG. 001033

NOTES:

- 1. FINISH IS ZINC PLATED AND GOLD CHROMATE.
- 2. NOT INCLUDED; REFER TO FIG. 001021.
- 3. PIPE NOT INCLUDED; REFER TO FIG. 003037.

STOCK LIST

ITEM	QTY	DESCRIPTION
1	2	CLIP
2	2	1/2 LOCK WASHER
3	2	1/2-13 NUT
4	1	V-BOLT



FASTENING FRAME TOP ANGLE TO PARALLEL
AUXILIARY FRAMING BAR

ORDERING NUMBER: 0010340010

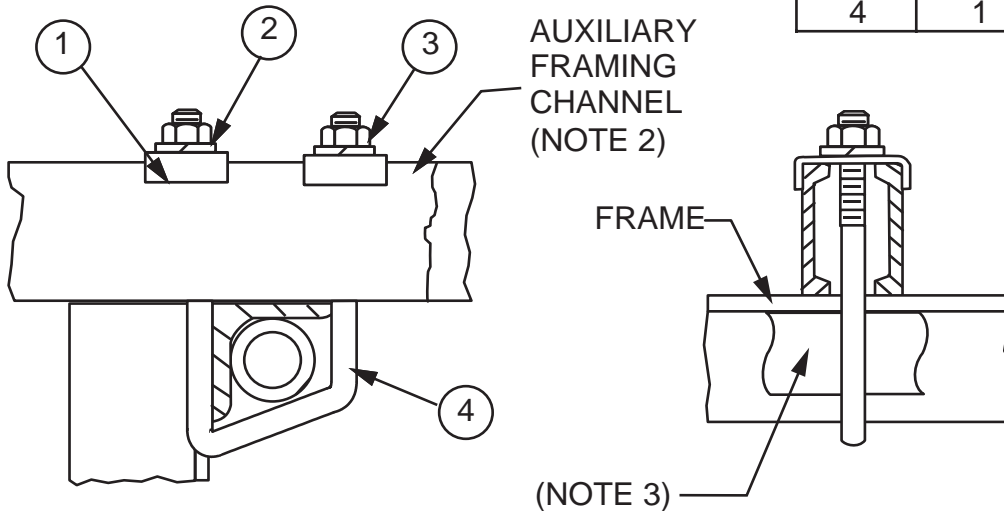
FIG. 001034

NOTES:

- 1. FINISH IS ZINC PLATED AND GOLD CHROMATE.
- 2. NOT INCLUDED; REFER TO FIG. 001022.
- 3. PIPE NOT INCLUDED; REFER TO FIG. 003037.

STOCK LIST

ITEM	QTY	DESCRIPTION
1	2	CLIP
2	2	1/2 LOCK WASHER
3	2	1/2-13 NUT
4	1	V-BOLT



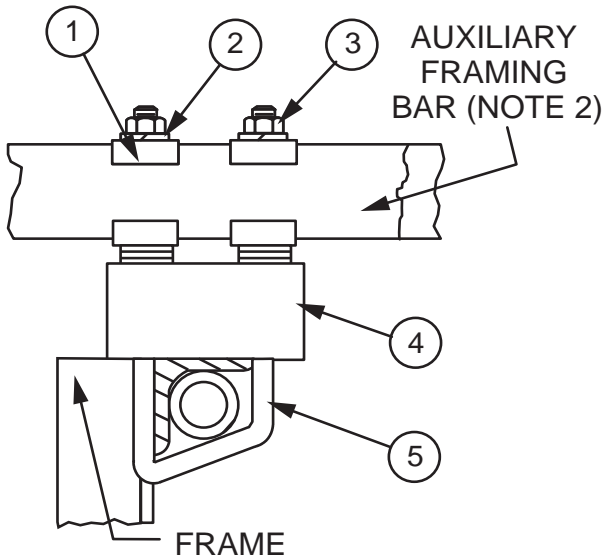
FASTENING FRAME TOP ANGLE TO PARALLEL
AUXILIARY FRAMING CHANNEL

ORDERING NUMBER: 0010340110

FIG. 001034

NOTES:

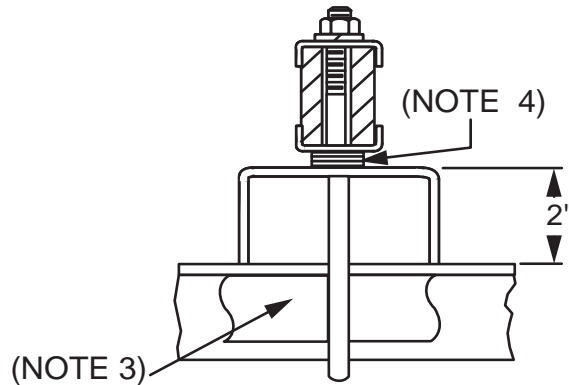
1. FINISH IS ZINC PLATED AND GOLD CHROMATE.
2. NOT INCLUDED; REFER TO FIG. 001021.
3. PIPE NOT INCLUDED; REFER TO FIG. 003037.
4. NOT INCLUDED; REFER TO FIG. 003016-7.



FASTENING FRAME TOP ANGLE TO AUXILIARY FRAMING BAR WITH 2" SPACER BETWEEN

STOCK LIST

ITEM	QTY	DESCRIPTION
1	4	CLIP
2	2	1/2 LOCK WASHER
3	2	1/2-13 NUT
4	1	CHANNEL SPACER
5	1	V-BOLT

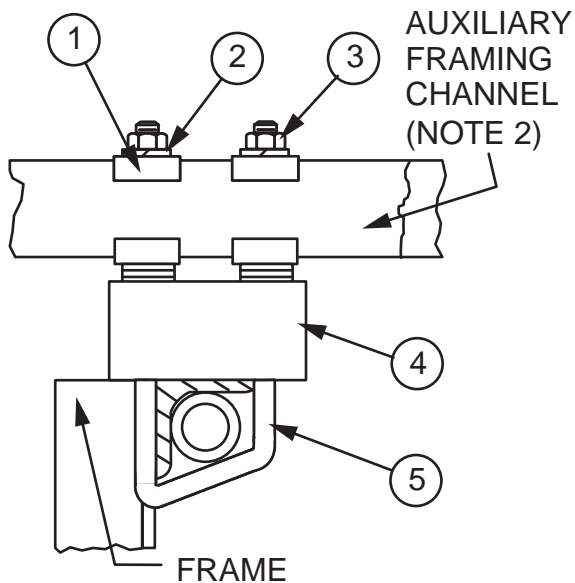


ORDERING NUMBER: 0010350010

FIG. 001035

NOTES:

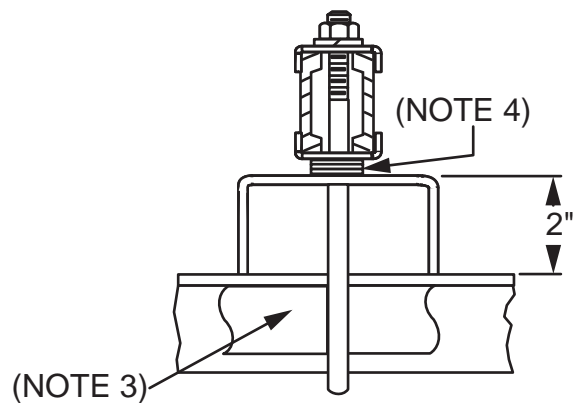
1. FINISH IS ZINC PLATED AND GOLD CHROMATE.
2. NOT INCLUDED; REFER TO FIG. 001022.
3. PIPE NOT INCLUDED; REFER TO FIG. 003037.
4. NOT INCLUDED; REFER TO FIG. 003016-7.



FASTENING FRAME TOP ANGLE TO PARALLEL AUXILIARY FRAMING CHANNEL WITH 2" SPACER BETWEEN

STOCK LIST

ITEM	QTY	DESCRIPTION
1	4	CLIP
2	2	1/2 LOCK WASHER
3	2	1/2-13 NUT
4	1	CHANNEL SPACER
5	1	V-BOLT



ORDERING NUMBER: 0010350110

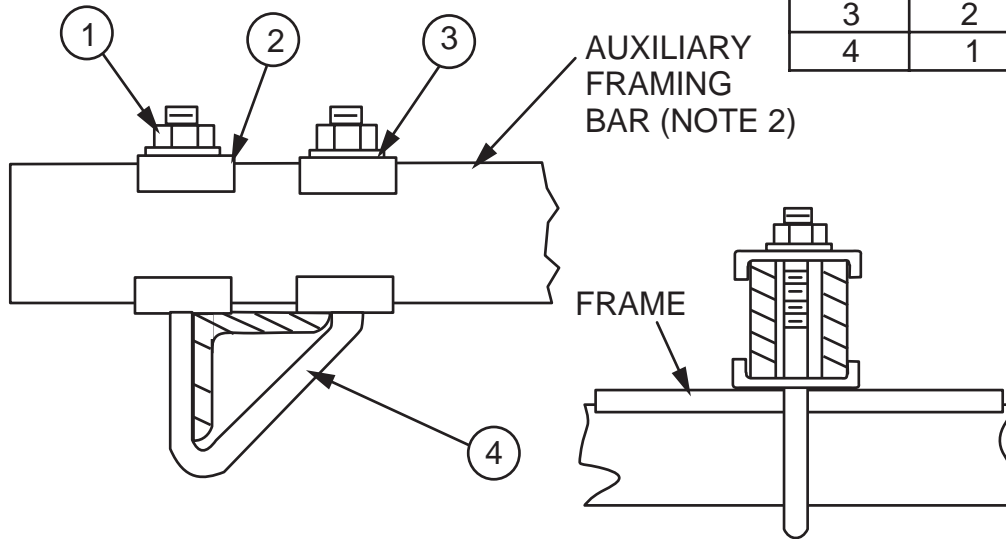
FIG. 001035

NOTES:

- 1. FINISH IS ZINC PLATED AND GOLD CHROMATE.
- 2. NOT INCLUDED; REFER TO FIG. 001021.

STOCK LIST

ITEM	QTY	DESCRIPTION
1	4	1/2-13 NUT
2	2	CLIP
3	2	1/2 LOCK WASHER
4	1	V-BOLT



SECURING FRAME TOP ANGLE TO AUXILIARY FRAMING BAR

ORDERING NUMBER: 0010360010

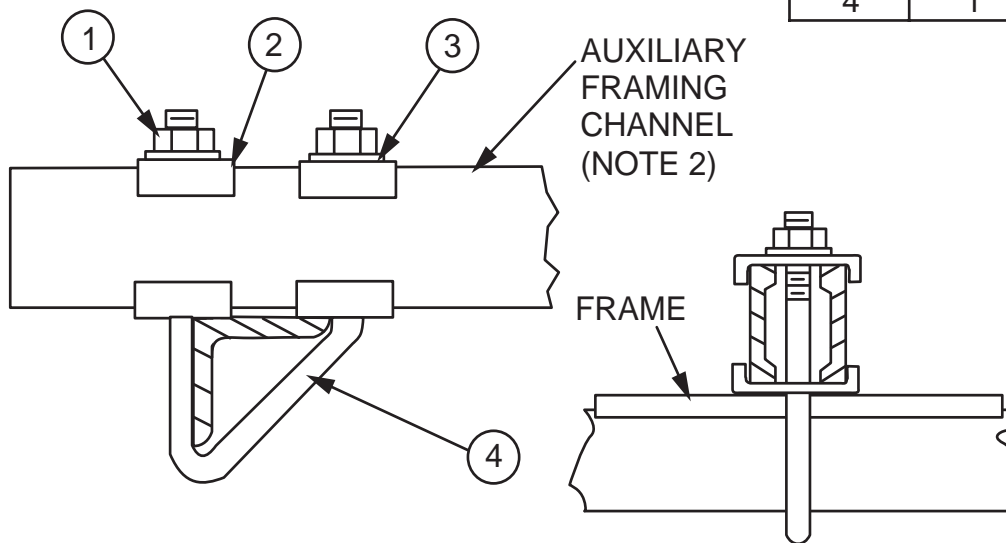
FIG. 001036

NOTES:

- 1. FINISH IS ZINC PLATED AND GOLD CHROMATE.
- 2. NOT INCLUDED; REFER TO FIG. 001022.

STOCK LIST

ITEM	QTY	DESCRIPTION
1	4	1/2-13 NUT
2	2	CLIP
3	2	1/2 LOCK WASHER
4	1	V-BOLT



SECURING FRAME TOP ANGLE TO PARALLEL AUXILIARY FRAMING CHANNEL

ORDERING NUMBER: 0010360110

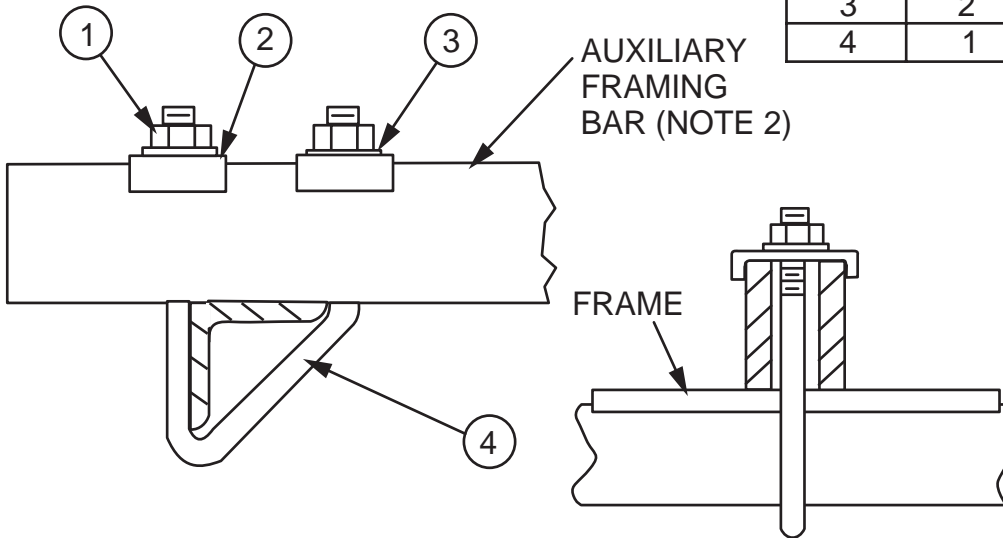
FIG. 001036

NOTES:

- 1. FINISH IS ZINC PLATED AND GOLD CHROMATE.
- 2. NOT INCLUDED; REFER TO FIG. 001021.

STOCK LIST

ITEM	QTY	DESCRIPTION
1	4	1/2-13 NUT
2	2	CLIP
3	2	1/2 LOCK WASHER
4	1	V-BOLT



SECURING FRAME TOP ANGLE TO AUXILIARY FRAMING BAR WITH ALTERNATE ASSEMBLY

ORDERING NUMBER: 0010370010

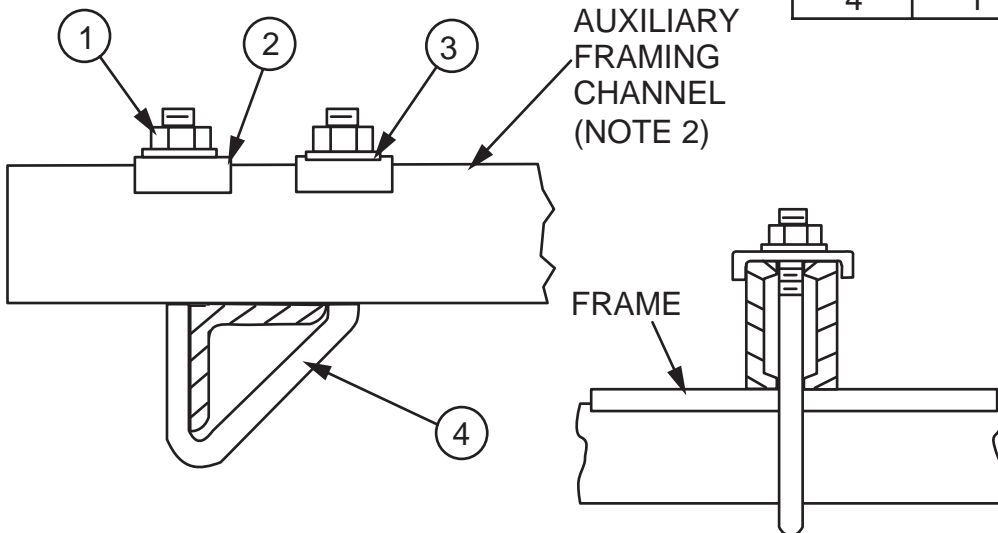
FIG. 001037

NOTES:

- 1. FINISH IS ZINC PLATED AND GOLD CHROMATE.
- 2. NOT INCLUDED; REFER TO FIG. 001022.

STOCK LIST

ITEM	QTY	DESCRIPTION
1	4	1/2-13 NUT
2	2	CLIP
3	2	1/2 LOCK WASHER
4	1	V-BOLT



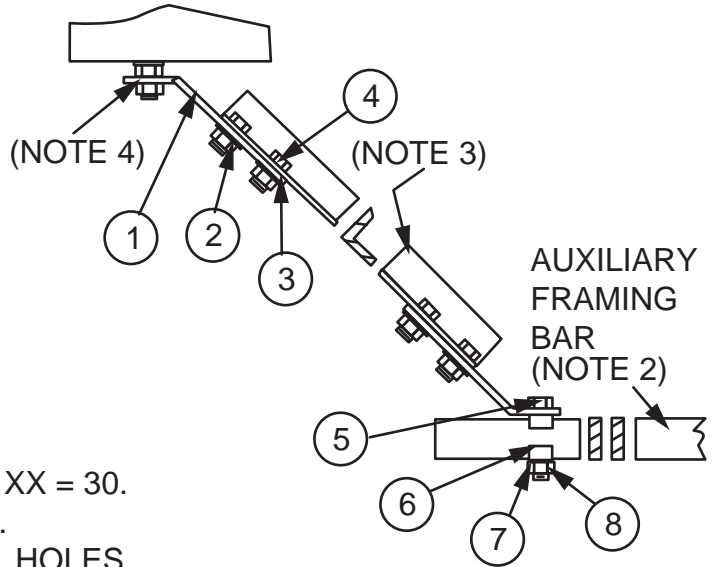
SECURING FRAME TOP ANGLE TO PARALLEL AUXILIARY FRAMING CHANNEL WITH ALTERNATE ASSEMBLY

ORDERING NUMBER: 0010370110

FIG. 001037

STOCK LIST

ITEM	QTY	DESCRIPTION
1	2	BRACE
2	4	1/2-13 NUT
3	4	1/2 LOCK WASHER
4	4	1/2-13 X 1-1/4 HHCS
5	1	5/8-11 X 3-1/4 HHCS
6	2	CLIP
7	1	5/8-11 NUT
8	1	5/8 LOCK WASHER



NOTES:

1. XX = FINISH CODE; STANDARD FINISH, XX = 30.
2. NOT INCLUDED; REFER TO FIG. 001021.
3. NOT INCLUDED; REFER TO FIG. 003034. HOLES DRILLED IN ANGLE BY INSTALLER.
4. NOT INCLUDED; REFER TO HARDWARE SECTION FOR VARIOUS OPTIONS AVAILABLE.

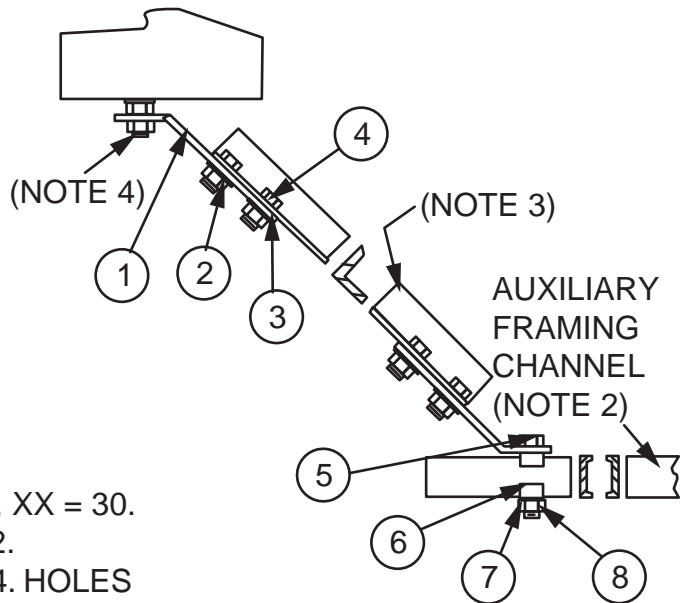
BRACING AUXILIARY FRAMING BAR WITH ANGLE FROM CEILING

ORDERING NUMBER: 00103800XX

FIG. 001038

STOCK LIST

ITEM	QTY	DESCRIPTION
1	2	BRACE
2	4	1/2-13 NUT
3	4	1/2 LOCK WASHER
4	4	1/2-13 X 1-1/4 HHCS
5	1	5/8-11 X 3-1/4 HHCS
6	2	CLIP
7	1	5/8-11 NUT
8	1	5/8 LOCK WASHER



NOTES:

1. XX = FINISH CODE; STANDARD FINISH, XX = 30.
2. NOT INCLUDED; REFER TO FIG. 001022.
3. NOT INCLUDED; REFER TO FIG. 003034. HOLES DRILLED IN ANGLE BY INSTALLER.
4. NOT INCLUDED; REFER TO HARDWARE SECTION FOR VARIOUS OPTIONS AVAILABLE.

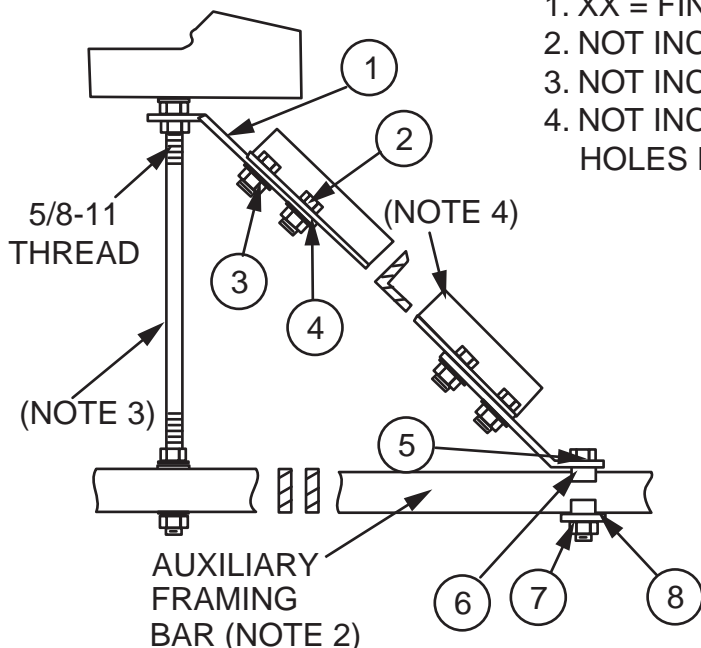
BRACING PARALLEL AUXILIARY FRAMING CHANNEL WITH ANGLE FROM CEILING

ORDERING NUMBER: 00103801XX

FIG. 001038

NOTES:

1. XX = FINISH CODE; STANDARD FINISH, XX = 30.
 2. NOT INCLUDED; REFER TO FIG. 001021.
 3. NOT INCLUDED; REFER TO FIG. 003022.
 4. NOT INCLUDED; REFER TO FIG. 003034.
- HOLES DRILLED IN ANGLE BY INSTALLER.



STOCK LIST

ITEM	QTY	DESCRIPTION
1	2	BRACE
2	4	1/2-13 X 1-1/4 HHCS
3	4	1/2-13 NUT
4	4	1/2 LOCK WASHER
5	1	5/8-11 X 3-3/4 HHCS
6	4	CLIP
7	5	5/8-11 NUT
8	3	5/8 LOCK WASHER

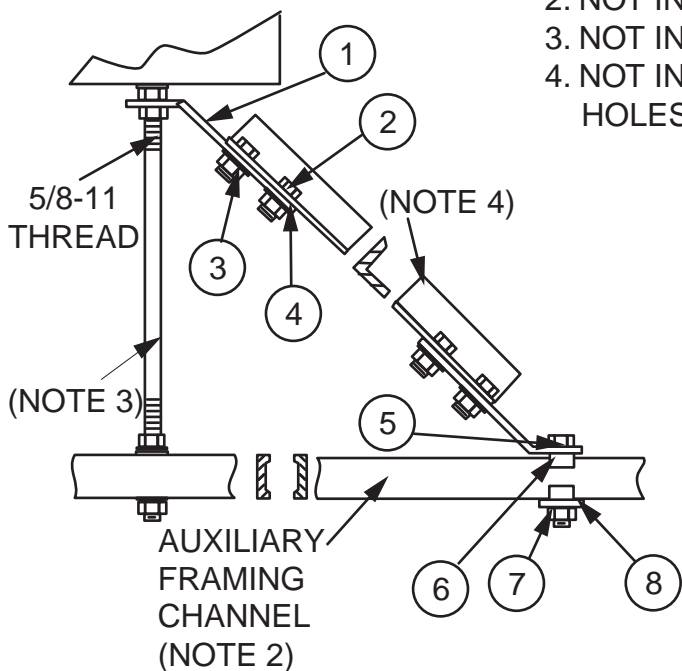
SUPPORTING AND BRACING AUXILIARY FRAMING BAR FROM CEILING

ORDERING NUMBER: 00103900XX

FIG. 001039

NOTES:

1. XX = FINISH CODE; STANDARD FINISH, XX = 30.
 2. NOT INCLUDED; REFER TO FIG. 001022.
 3. NOT INCLUDED; REFER TO FIG. 003022.
 4. NOT INCLUDED; REFER TO FIG. 003034.
- HOLES DRILLED IN ANGLE BY INSTALLER.



STOCK LIST

ITEM	QTY	DESCRIPTION
1	2	BRACE
2	4	1/2-13 X 1-1/4 HHCS
3	4	1/2-13 NUT
4	4	1/2 LOCK WASHER
5	1	5/8-11 X 3-3/4 HHCS
6	4	CLIP
7	5	5/8-11 NUT
8	3	5/8 LOCK WASHER

SUPPORTING AND BRACING PARALLEL AUXILIARY FRAMING CHANNEL FROM CEILING

ORDERING NUMBER: 00103901XX

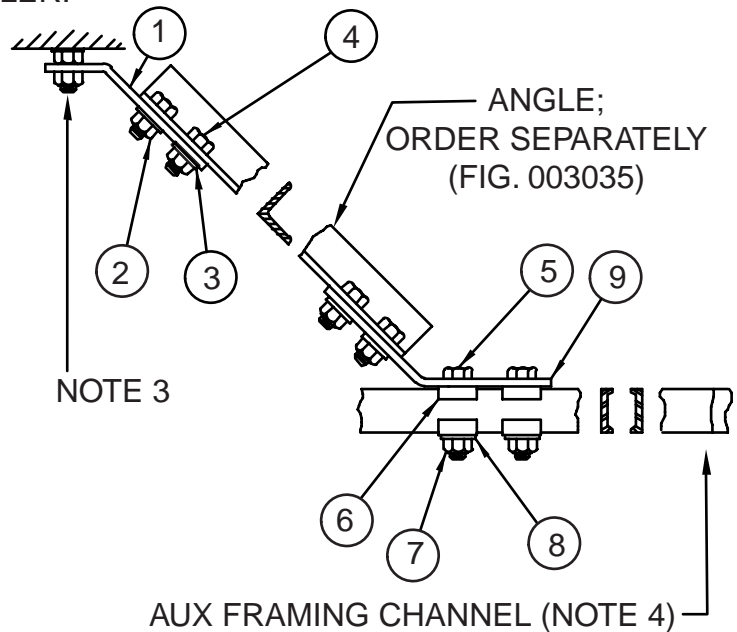
FIG. 001039

NOTES:

1. XX = FINISH CODE; STANDARD FINISH, XX = 30.
2. HOLES DRILLED IN ANGLE BY INSTALLER.
3. CEILING ATTACHMENT HARDWARE NOT INCLUDED.
4. NOT INCLUDED; REFER TO FIG. 001022.

STOCK LIST

ITEM	QTY	DESCRIPTION
1	1	BRACE
2	4	1/2-13 NUT
3	4	LOCK WASHER
4	4	1/2-13 X 1-1/4" HHCS
5	2	5/8-11 X 3-1/2" HHCS
6	4	CLIP
7	2	5/8-11 NUT
8	2	LOCK WASHER
9	1	BRACE



ORDERING NUMBER: 21090400XX

BRACING OF AUXILIARY CHANNEL FROM CEILING

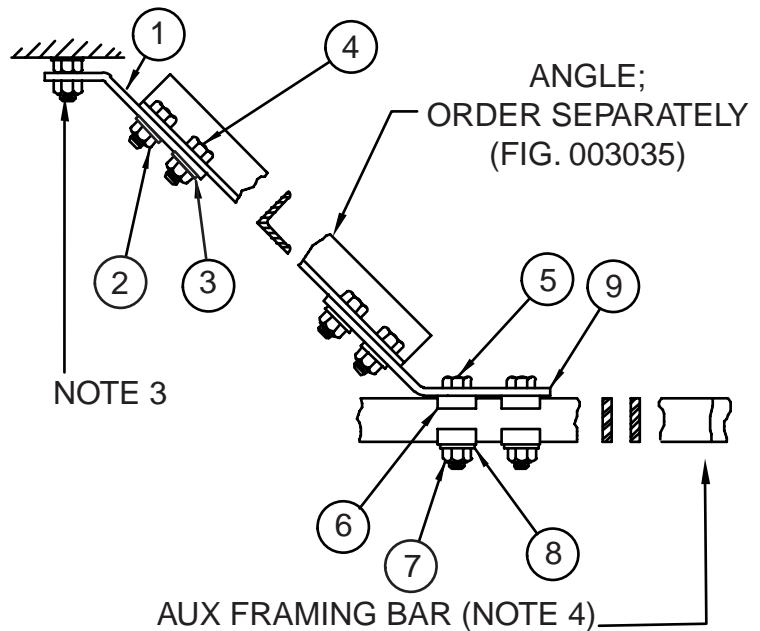
FIG. 210904

NOTES:

1. XX = FINISH CODE; STANDARD FINISH, XX = 30.
2. HOLES DRILLED IN ANGLE BY INSTALLER.
3. CEILING ATTACHMENT HARDWARE NOT INCLUDED.
4. NOT INCLUDED; REFER TO FIG. 001021.

STOCK LIST

ITEM	QTY	DESCRIPTION
1	1	BRACE
2	4	1/2-13 NUT
3	4	LOCK WASHER
4	4	1/2-13 X 1-1/4" HHCS
5	2	5/8-11 X 3-1/2" HHCS
6	4	CLIP
7	2	5/8-11 NUT
8	2	LOCK WASHER
9	1	BRACE



ORDERING NUMBER: 21090401XX

BRACING OF AUXILIARY BAR FROM CEILING

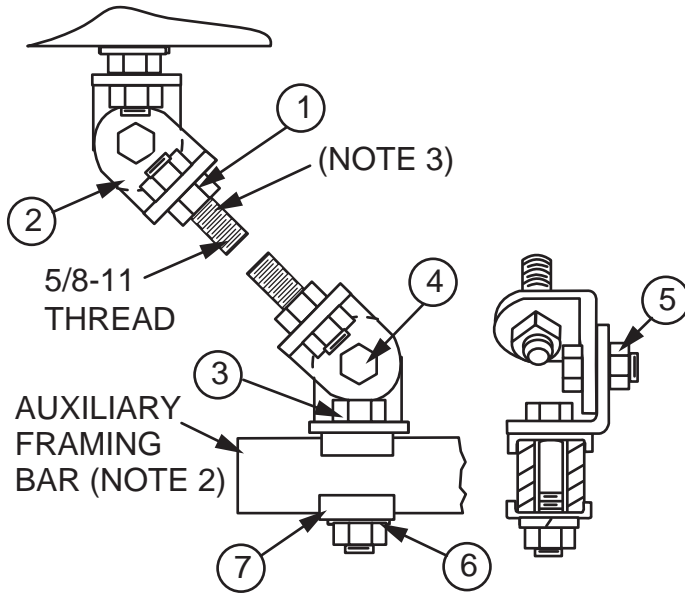
FIG. 210904

NOTES:

- 1. FINISH IS ZINC PLATED AND GOLD CHROMATE.
- 2. NOT INCLUDED; REFER TO FIG. 001021.
- 3. NOT INCLUDED; REFER TO FIG. 003022.

STOCK LIST

ITEM	QTY	DESCRIPTION
1	5	5/8-11 NUT
2	4	BRACKET
3	1	5/8-11 X 3-3/4 HHCS
4	2	1/2-13 X 1-1/4 HHCS
5	2	1/2-13 NUT
6	1	5/8 LOCK WASHER
7	2	CLIP



BRACING AUXILIARY FRAMING BAR FROM CEILING OR WALL

ORDERING NUMBER: 0010400010

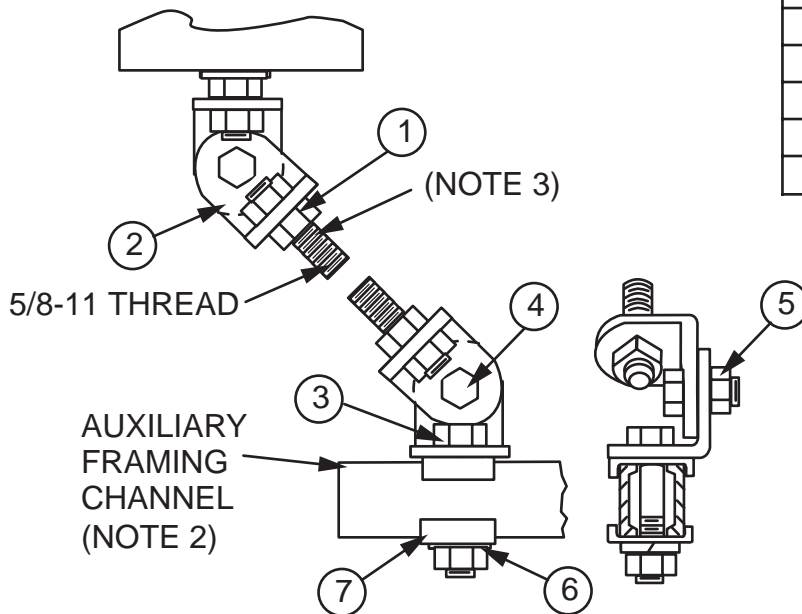
FIG. 001040

NOTES:

- 1. FINISH IS ZINC PLATED AND GOLD CHROMATE.
- 2. NOT INCLUDED; REFER TO FIG. 001022.
- 3. NOT INCLUDED; REFER TO FIG. 003022.

STOCK LIST

ITEM	QTY	DESCRIPTION
1	5	5/8-11 NUT
2	4	BRACKET
3	1	5/8-11 X 3-3/4 HHCS
4	2	1/2-13 X 1-1/4 HHCS
5	2	1/2-13 NUT
6	1	5/8 LOCK WASHER
7	2	CLIP



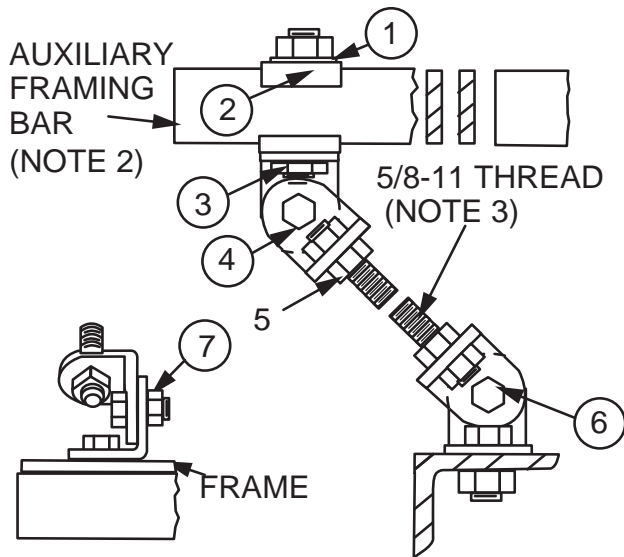
BRACING PARALLEL AUXILIARY FRAMING CHANNEL FROM CEILING OR WALL

ORDERING NUMBER: 0010400110

FIG. 001040

NOTES:

- 1. FINISH IS ZINC PLATED AND GOLD CHROMATE.
- 2. NOT INCLUDED; REFER TO FIG. 001021.
- 3. NOT INCLUDED; REFER TO FIG. 003022.



STOCK LIST

ITEM	QTY	DESCRIPTION
1	1	5/8 LOCK WASHER
2	2	CLIP
3	1	5/8-11 HHCS
4	4	BRACKET
5	5	5/8-11 NUT
6	3	1/2-13 HHCS
7	3	1/2-13 NUT

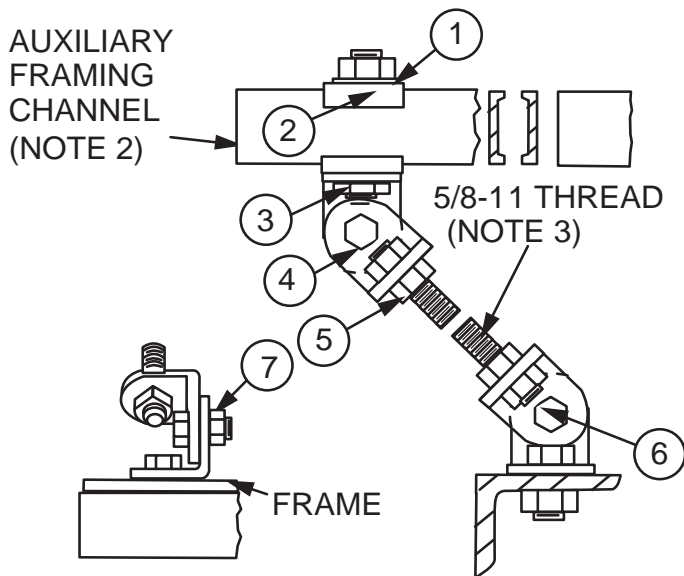
ORDERING NUMBER: 0010410010

BRACING FRAME FROM AUXILIARY FRAMING BAR

FIG. 001041

NOTES:

- 1. FINISH IS ZINC PLATED AND GOLD CHROMATE.
- 2. NOT INCLUDED; REFER TO FIG. 001022.
- 3. NOT INCLUDED; REFER TO FIG. 003022.



STOCK LIST

ITEM	QTY	DESCRIPTION
1	1	5/8 LOCK WASHER
2	2	CLIP
3	1	5/8-11 HHCS
4	4	BRACKET
5	5	5/8-11 NUT
6	3	1/2-13 HHCS
7	3	1/2-13 NUT

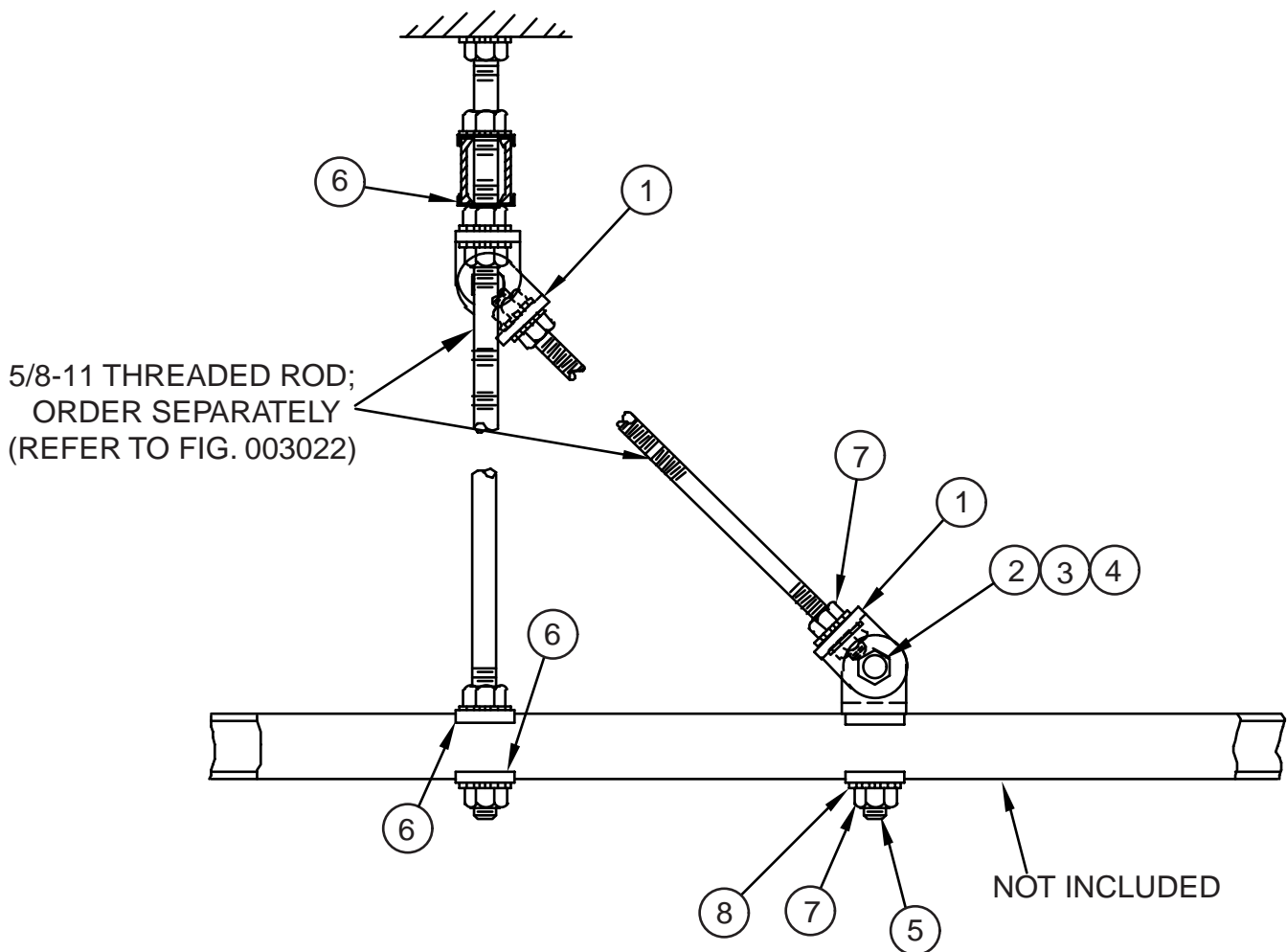
ORDERING NUMBER: 0010410110

BRACING FRAME FROM PARALLEL
AUXILIARY FRAMING CHANNEL

FIG. 001041

STOCK LIST

ITEM	QTY	DESCRIPTION
1	4	BRACKET
2	2	1/2-13 X 1-1/4 HHCS
3	2	1/2-13 NUT
4	2	1/2 INT. LOCK WASHER
5	1	5/8-11 X 3-1/4 HHCS
6	6	CLIP
7	11	5/8-11 NUT
8	11	5/8 INT. LOCK WASHER



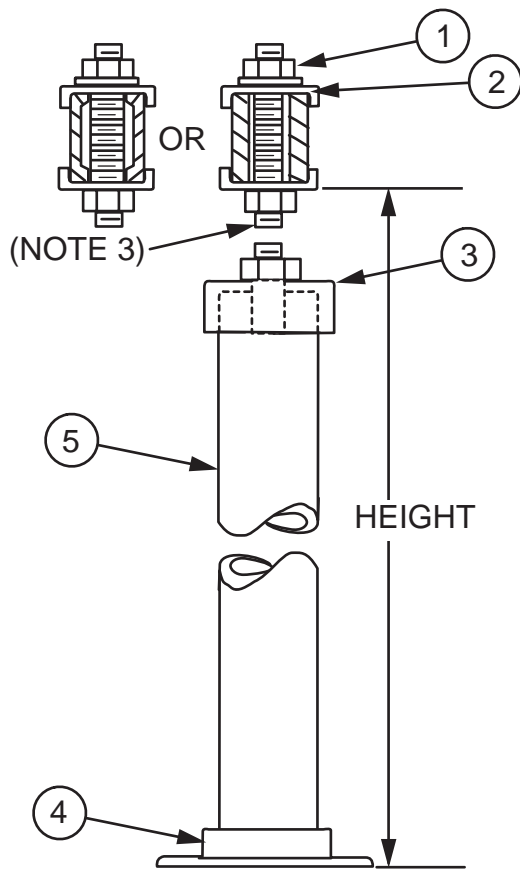
NOTES:

1. FINISH IS ZINC PLATED AND GOLD CHROMATE.

ORDERING NUMBER: 2140400110

BRACING LOWER FRAMING AT RIGHT ANGLE

FIG. 214040



STOCK LIST

ITEM	QTY	DESCRIPTION
1	3	5/8-11 HEX NUT
2	2	CLIP
3	1	PIPE CAP
4	1	FLOOR FLANGE
5	1	2" PIPE

ORDERING TABLE
FIG. 001042 FOR
FRAMING BAR

ORDERING NO.	HEIGHT
00104201XX	7'
00104202XX	7'-6"
00104203XX	8'
00104204XX	9'
00104205XX	11'-6"
00104206XX	11'-8"

ORDERING TABLE
FIG. 001042 FOR
FRAMING CHANNEL

ORDERING NO.	HEIGHT
00104207XX	7'
00104208XX	7'-6"
00104209XX	8'
00104210XX	9'
00104211XX	11'-6"
00104212XX	11'-8"

NOTES:

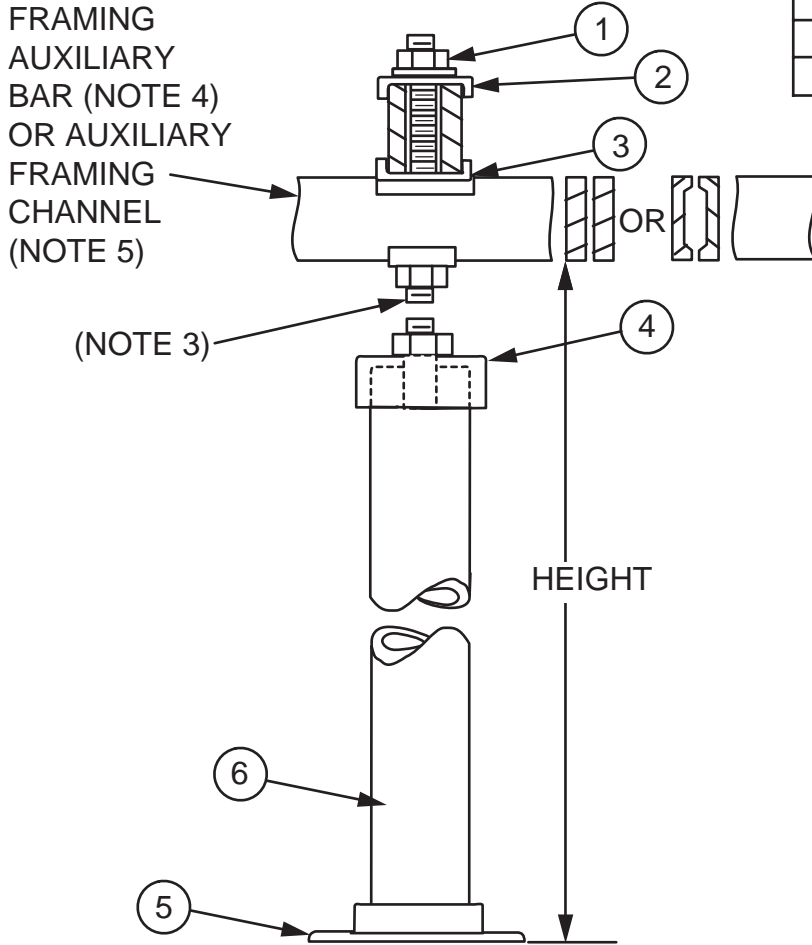
1. XX = FINISH CODE; STANDARD FINISH, XX = 30.
2. REFER TO ORDERING TABLE FOR OVERALL HEIGHT, INCLUDING PIPE.
3. THREADED ROD ORDERED SEPARATELY; REFER TO FIG. 003022.

SUPPORTING AUXILIARY FRAMING BAR
OR CHANNEL WITH 2" PIPE STAND

ORDERING NUMBER: REFER TO TABLE
FIG. 001042

STOCK LIST

ITEM	QTY	DESCRIPTION
1	3	5/8 LOCK WASHER
2	2	CLIP
3	1	CLIP
4	1	PIPE CAP
5	1	FLOOR FLANGE
6	1	2" PIPE (NOTE 2)



ORDERING TABLE
FIG. 1043 FOR
FRAMING BAR

ORDERING NO.	HEIGHT
00104301XX	7'
00104302XX	7'-6"
00104303XX	8'
00104304XX	9'
00104305XX	11'-6"
00104306XX	11'-8"

ORDERING TABLE
FIG. 1043 FOR
FRAMING CHANNEL

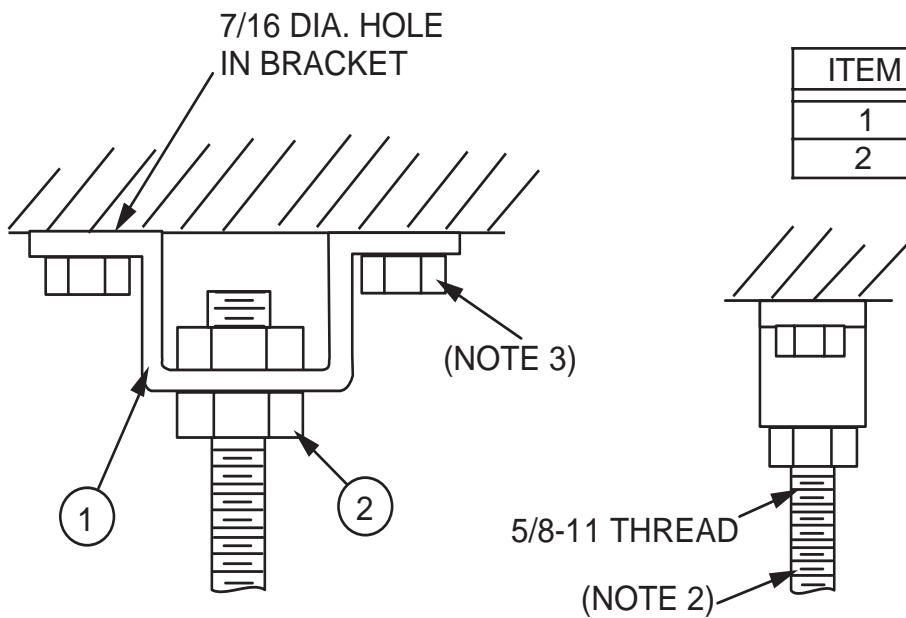
ORDERING NO.	HEIGHT
00104307XX	7'
00104308XX	7'-6"
00104309XX	8'
00104310XX	9'
00104311XX	11'-6"
00104312XX	11'-8"

NOTES:

1. XX = FINISH CODE; STANDARD FINISH, XX = 30.
2. REFER TO ORDERING TABLE FOR OVERALL HEIGHT, INCLUDING PIPE.
3. THREADED ROD ORDERED SEPARATELY; REFER TO FIG. 003022.
4. NOT INCLUDED; REFER TO FIG. 001021.
5. NOT INCLUDED; REFER TO FIG. 001022.

SUPPORTING AUXILIARY FRAMING BAR
OR FRAMING CHANNEL WITH 2" PIPE STAND

ORDERING NUMBER: REFER TO TABLE
FIG. 001043



STOCK LIST		
ITEM	QTY	DESCRIPTION
1	1	BRACKET
2	2	5/8-11 NUT

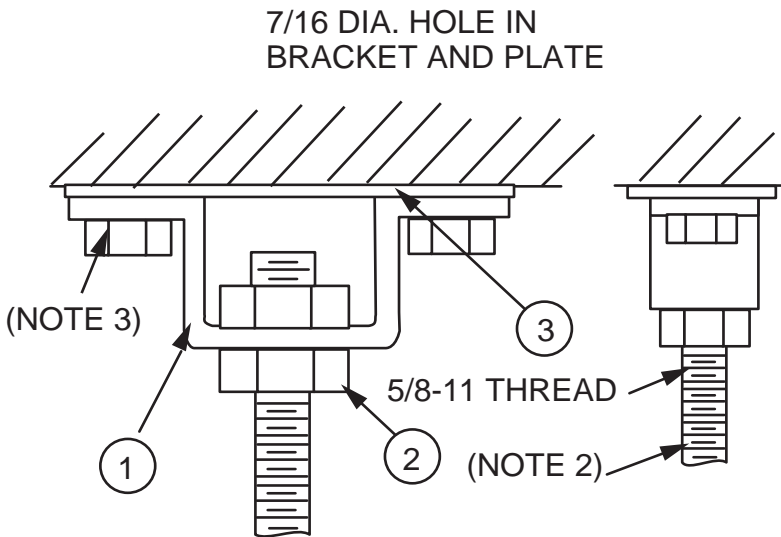
NOTES:

1. XX = FINISH CODE; STANDARD FINISH, XX = 30.
2. NOT INCLUDED; REFER TO FIG. 003022.
3. NOT INCLUDED; REFER TO HARDWARE SECTION FOR VARIOUS OPTIONS AVAILABLE.

ORDERING NUMBER: 00104400XX

CEILING HANGER BRACKET

FIG. 001044



STOCK LIST		
ITEM	QTY	DESCRIPTION
1	1	BRACKET
2	2	5/8-11 NUT
3	1	PLATE

NOTES:

1. XX = FINISH CODE; STANDARD FINISH, XX = 30.
2. NOT INCLUDED; REFER TO FIG. 003022.
3. NOT INCLUDED; REFER TO HARDWARE SECTION FOR VARIOUS OPTIONS AVAILABLE.

ORDERING NUMBER: 00104500XX

CEILING HANGER BRACKET WITH PLATE

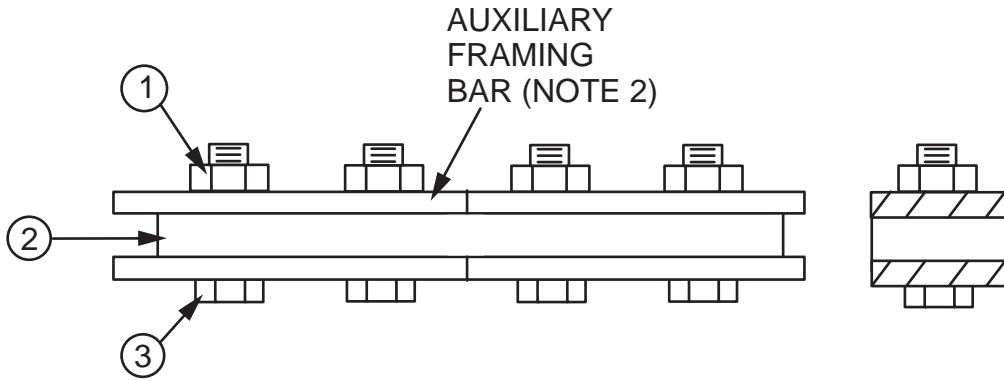
FIG. 001045

NOTES:

- 1. XX = FINISH CODE; STANDARD FINISH, XX = 30.
- 2. NOT INCLUDED; REFER TO FIG. 001021.

STOCK LIST

ITEM	QTY	DESCRIPTION
1	1	3/8-16 NUT
2	2	SPLICE BAR
3	1	3/8-16 X 2 HHCS



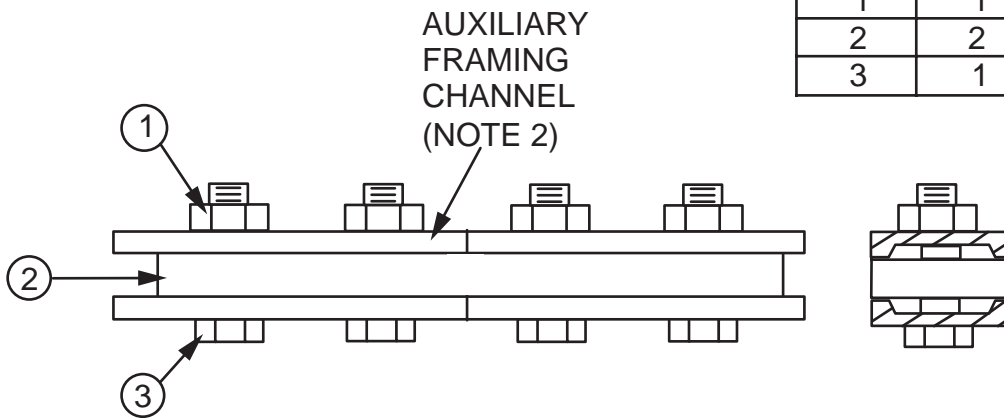
AUXILIARY FRAMING BAR SPLICE FOR RIGID SPLICE APPLICATION

ORDERING NUMBER: 00104600XX

FIG. 001046

STOCK LIST

ITEM	QTY	DESCRIPTION
1	1	1/2-13 NUT
2	2	SPLICE BAR
3	1	1/2-13 HHCS



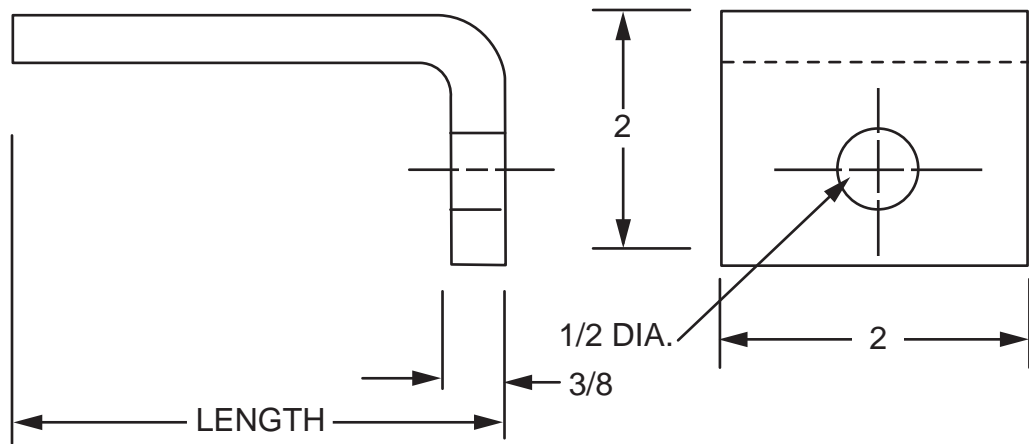
NOTES:

- 1. XX = FINISH CODE; STANDARD FINISH, XX = 30.
- 2. NOT INCLUDED; REFER TO FIG. 001022.

AUXILIARY FRAMING CHANNEL SPLICE FOR RIGID SPLICE APPLICATION

ORDERING NUMBER: 00104601XX

FIG. 001046



ORDERING TABLE

ORDERING NO.	LENGTH
00104801XX	3-1/2"
00104802XX	6"
00104803XX	12"

NOTE:
 1. XX = FINISH CODE; STANDARD FINISH, XX = 30.

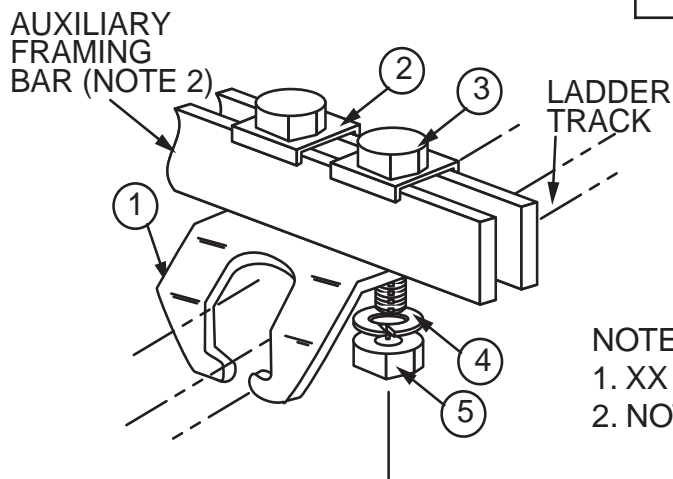
ORDERING NUMBER: REFER TO TABLE

AUXILIARY FRAMING MOUNTING ANGLE

FIG. 001048

STOCK LIST

ITEM	QTY	DESCRIPTION
1	1	MODIFIED LADDER BRACKET
2	2	CLIP
3	2	5/8-11 X 3-1/2 HHCS
4	2	5/8 LOCK WASHER
5	2	5/8-11 HEX NUT



NOTES:

- 1. XX = FINISH CODE; STANDARD FINISH, XX = 30.
- 2. NOT INCLUDED; REFER TO FIG. 001021.

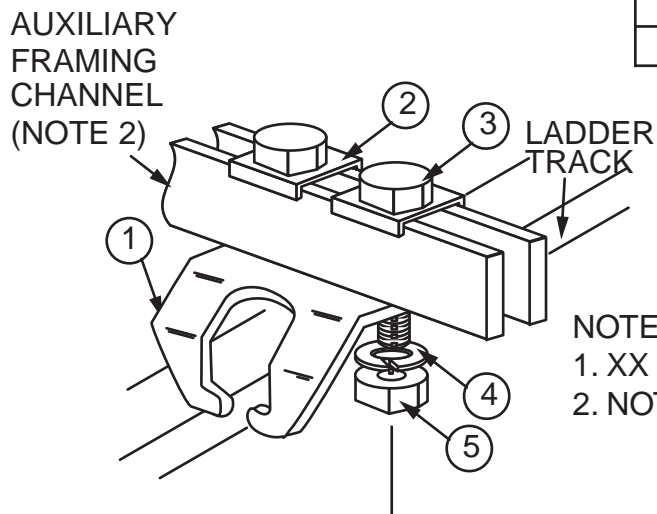
LADDER TRACK BRACKET ASSEMBLY FOR
AUXILIARY FRAMING BAR

ORDERING NUMBER: 00104900XX

FIG. 001049

STOCK LIST

ITEM	QTY	DESCRIPTION
1	1	MODIFIED LADDER BRACKET
2	2	CLIP
3	2	5/8-11 X 3-1/2 HHCS
4	2	5/8 LOCK WASHER
5	2	5/8-11 HEX NUT



NOTES:

- 1. XX = FINISH CODE; STANDARD FINISH, XX = 30.
- 2. NOT INCLUDED; REFER TO FIG. 001022.

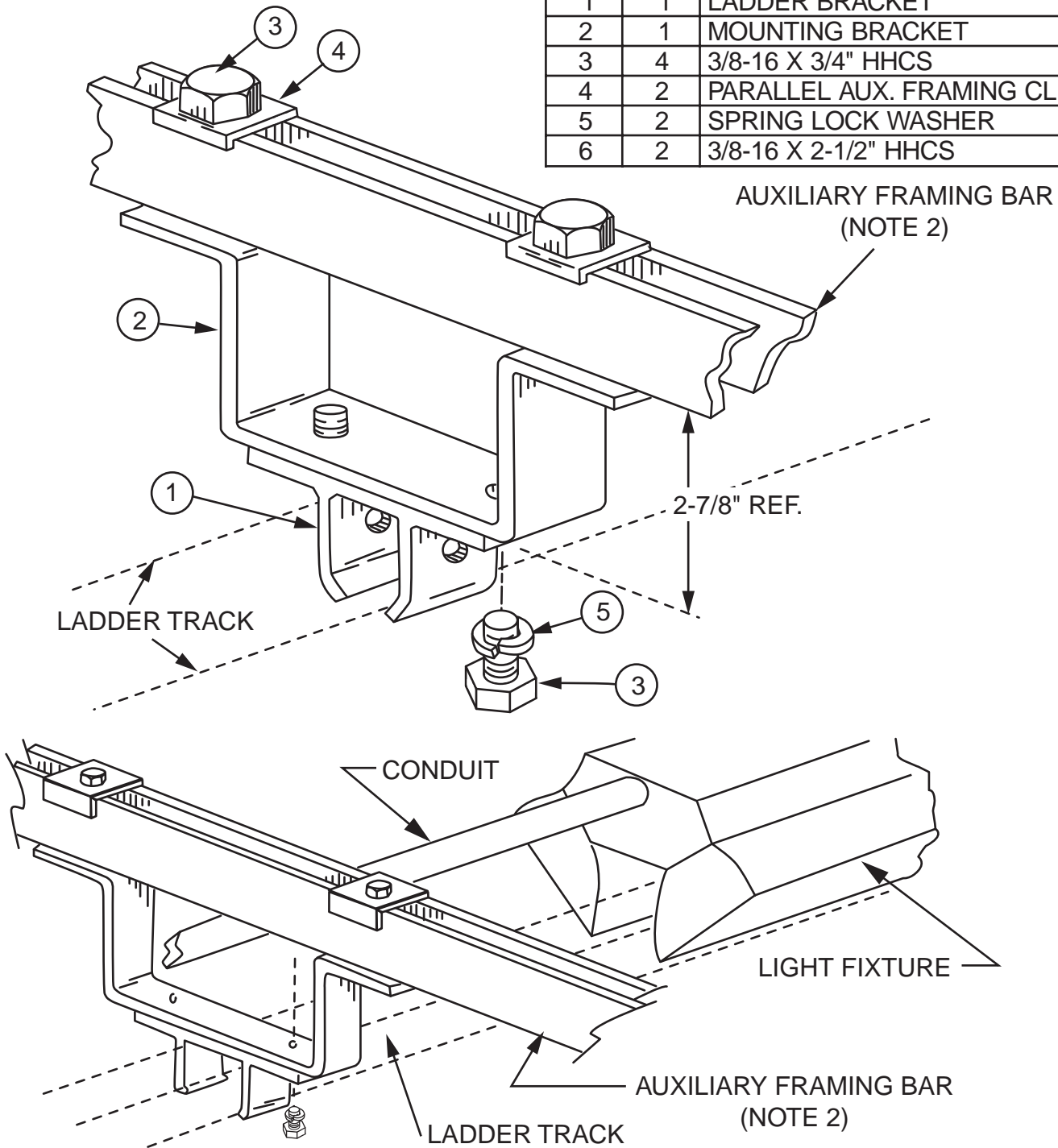
LADDER TRACK BRACKET ASSEMBLY FOR
AUXILIARY FRAMING CHANNEL

ORDERING NUMBER: 00104901XX

FIG. 001049

STOCK LIST

ITEM	QTY.	DESCRIPTION
1	1	LADDER BRACKET
2	1	MOUNTING BRACKET
3	4	3/8-16 X 3/4" HHCS
4	2	PARALLEL AUX. FRAMING CLIP
5	2	SPRING LOCK WASHER
6	2	3/8-16 X 2-1/2" HHCS



- NOTES:
 1. XX = FINISH CODE; STANDARD FINISH, XX = 30.
 2. NOT INCLUDED; REFER TO FIG. 001021.

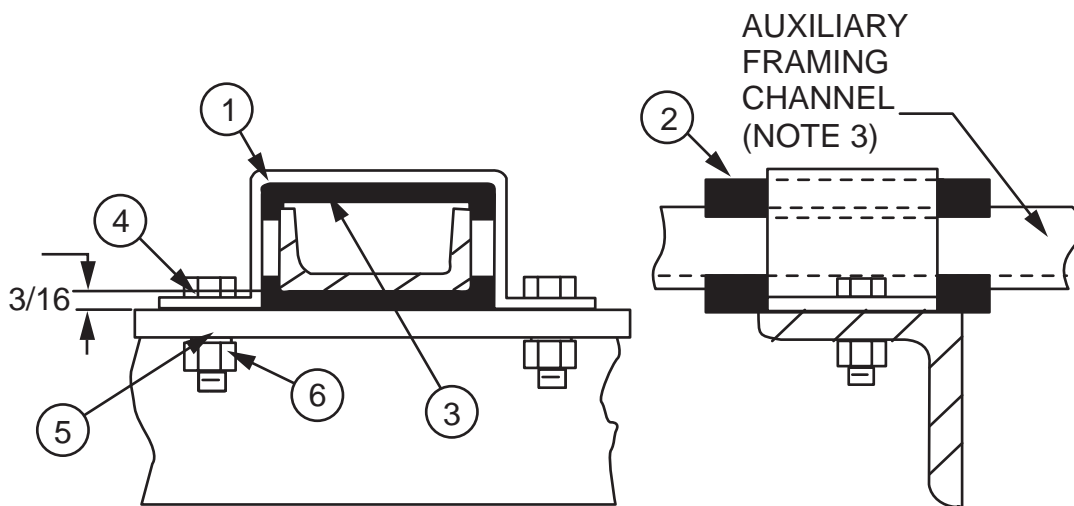
LADDER HANGER BRACKET USED
 WITH STACKLITER LIGHT FIXTURE

ORDERING NUMBER: 00105200XX

FIG. 001052

STOCK LIST

ITEM	QTY	DESCRIPTION
1	1	BRACKET
2	2	INSULATOR (NOTE 2)
3	1	SHIM PLATE
4	2	3/8-16 X 7/8 HHCS
5	2	3/8 LOCK WASHER
6	2	3/8-16 HEX NUT



NOTES:

1. FINISH IS ZINC PLATED AND GOLD CHROMATE.
2. INSULATOR MATERIAL IS RATED U.L. 94 V-1 AND HAS AN OXYGEN INDEX RATING OF GREATER THAN 29.
3. NOT INCLUDED; REFER TO FIG. 001022.

INSULATING AUXILIARY FRAMING CHANNEL FROM TOP ANGLE OR WALL ANGLE

ORDERING NUMBER: 0010530010

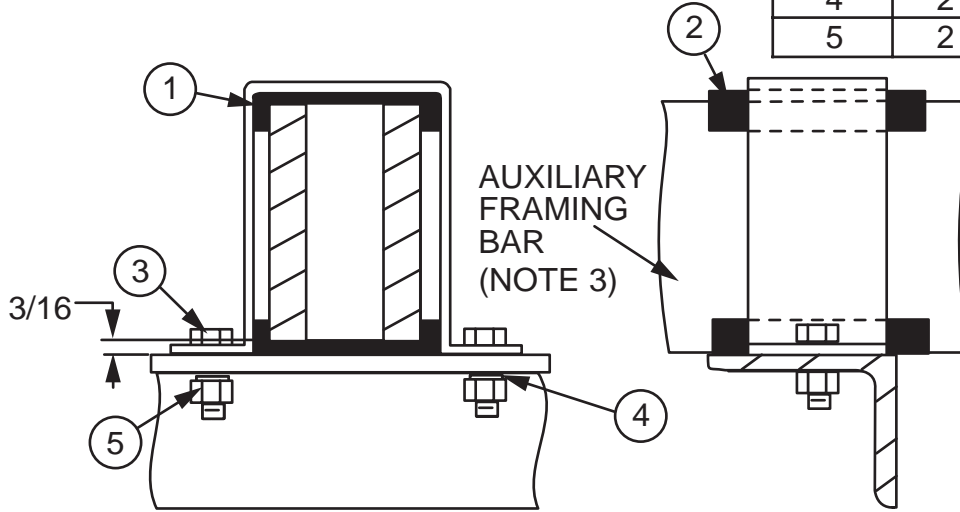
FIG. 001053

NOTES:

- 1. FINISH IS ZINC PLATED AND GOLD CHROMATE.
- 2. INSULATOR MATERIAL IS RATED U.L. 94 V-1 AND HAS AN OXYGEN INDEX RATING OF GREATER THAN 29.
- 3. NOT INCLUDED; REFER TO FIG. 001021.

STOCK LIST

ITEM	QTY	DESCRIPTION
1	1	BRACKET
2	2	INSULATOR (NOTE 2)
3	2	3/8-16 X 7/8 HHCS
4	2	3/8 LOCK WASHER
5	2	3/8-16 HEX NUT



INSULATING PARALLEL AUXILIARY FRAMING BAR FROM TOP ANGLE OR WALL ANGLE

ORDERING NUMBER: 0010540010

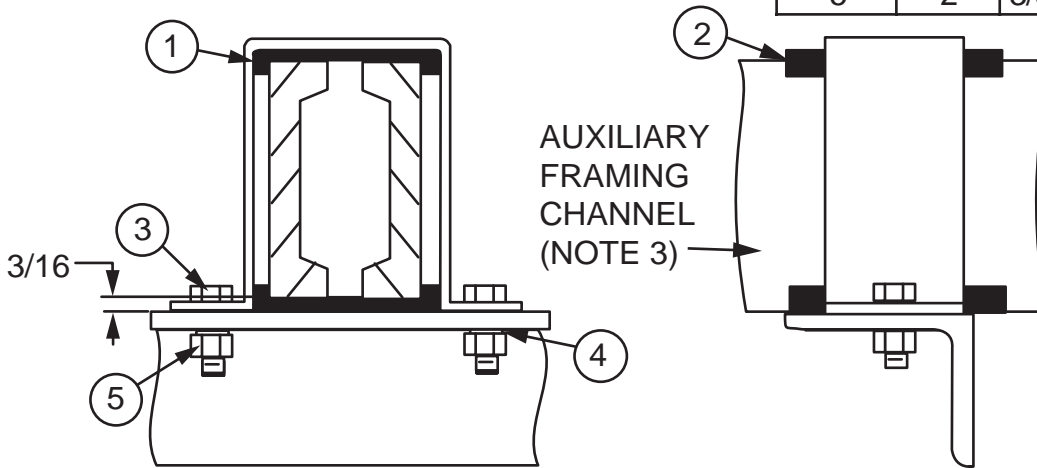
FIG. 001054

NOTES:

- 1. FINISH IS ZINC PLATED AND GOLD CHROMATE.
- 2. INSULATOR MATERIAL IS RATED U.L. 94 V-1 AND HAS AN OXYGEN INDEX RATING OF GREATER THAN 29.
- 3. NOT INCLUDED; REFER TO FIG. 001022.

STOCK LIST

ITEM	QTY	DESCRIPTION
1	1	BRACKET
2	2	INSULATOR (NOTE 2)
3	2	3/8-16 X 7/8 HHCS
4	2	3/8 LOCK WASHER
5	2	3/8-16 HEX NUT



INSULATING PARALLEL AUXILIARY FRAMING CHANNEL FROM TOP ANGLE OR WALL ANGLE

ORDERING NUMBER: 0010540110

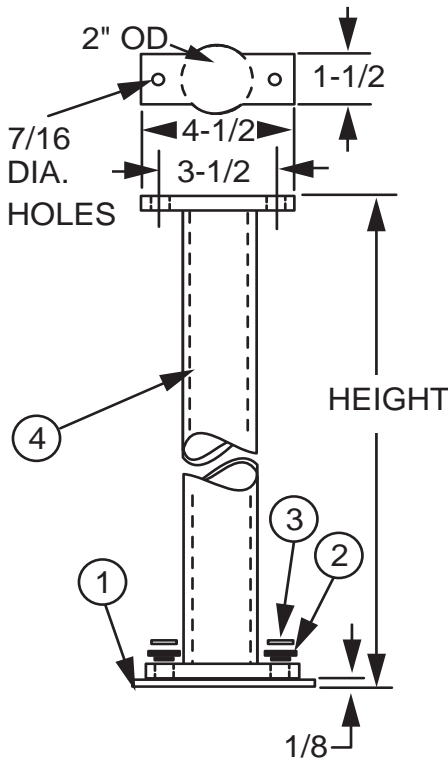
FIG. 001054

ORDERING TABLE

ORDERING NO.	HEIGHT
00105501XX	7'
00105502XX	7'-6"
00105503XX	8'
00105504XX	9'
00105505XX	11'-6"
00105506XX	11'-8"

STOCK LIST

ITEM	QTY	DESCRIPTION
1	1	INSULATOR PAD (NOTE 2)
2	4	BUSHING (NOTE 2)
3	4	3/8 FLAT WASHER
4	1	PIPE ASSEMBLY



ORDER SEPARATELY AS REQUIRED

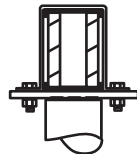
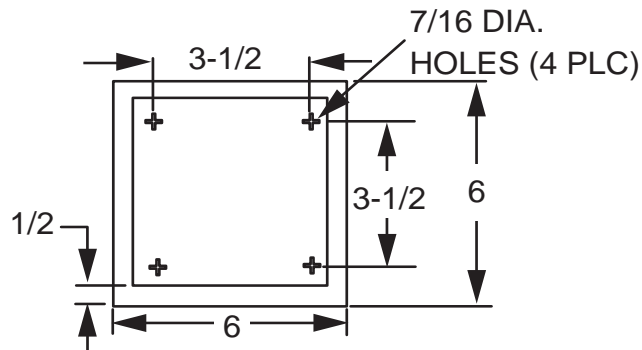


FIG. 00105400XX FIG. 00211400XX
 FIG. 00105401XX FIG. 00211401XX

FIG. 00105300XX



NOTES:

1. XX = FINISH CODE; STANDARD FINISH, XX = 30.
2. INSULATING MATERIAL IS RATED U.L. 94 V-1 AND HAS AN OXYGEN INDEX RATING OF GREATER THAN 29.
3. REFER TO ORDERING TABLE FOR OVERALL HEIGHTS AVAILABLE.

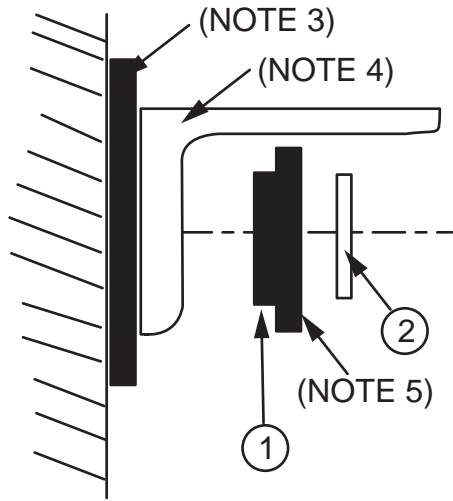
ORDERING NUMBER: REFER TO TABLE

PIPE STAND E/W INSULATING PAD

FIG. 001055

STOCK LIST

ITEM	QTY	DESCRIPTION
1	1	BUSHING (NOTE 2)
2	1	3/8 FLAT WASHER



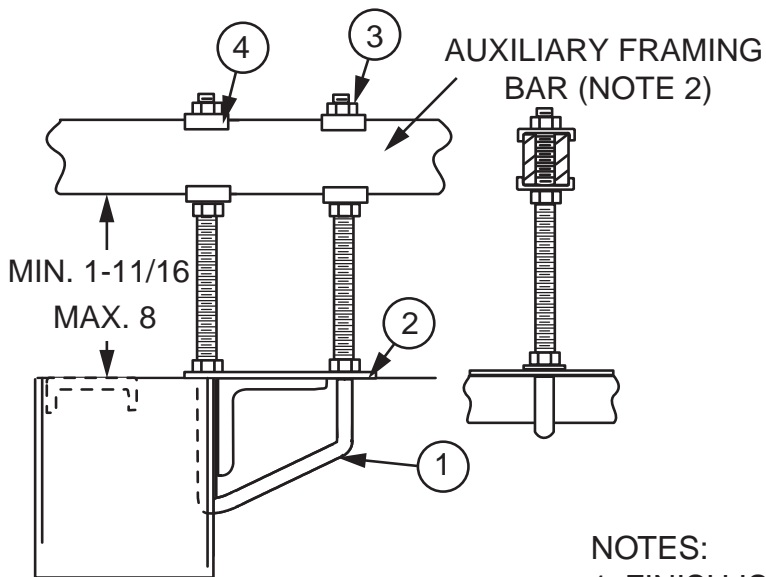
NOTES:

1. FINISH IS ZINC PLATED AND GOLD CHROMATE.
2. INSULATOR MATERIAL IS RATED U.L. 94 V-1 AND HAS AN OXYGEN INDEX RATING OF GREATER THAN 29.
3. NOT INCLUDED; ORDER INSULATOR MATERIAL AS REQUIRED; REFER TO FIG. 003068.
4. NOT INCLUDED; REFER TO HARDWARE SECTION FOR VARIOUS OPTIONS AVAILABLE.
5. BUSHING REQUIRES 3/4" DIA. HOLE, DRILLED BY USER.

ORDERING NUMBER: 0010560010

BUSHING FOR INSULATING WALL MOUNTING ANGLE

FIG. 001056



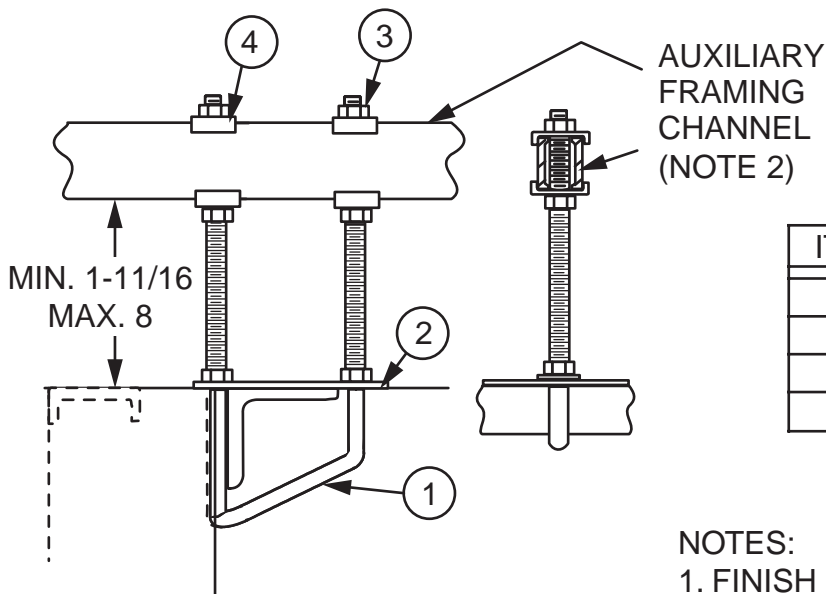
STOCK LIST

ITEM	QTY	DESCRIPTION
1	1	V-BOLT, 13"
2	1	PLATE
3	6	5/8-11 HEX NUT
4	4	CLIP

NOTES:
 1. FINISH IS ZINC PLATED AND GOLD CHROMATE.
 2. NOT INCLUDED; REFER TO FIG. 001021.

SUPPORTING PARALLEL AUXILIARY FRAMING BAR FROM UNEQUAL FLANGE RACK

ORDERING NUMBER: 0010570010
FIG. 001057



STOCK LIST

ITEM	QTY	DESCRIPTION
1	1	V-BOLT, 13"
2	1	PLATE
3	6	5/8-11 HEX NUT
4	4	CLIP

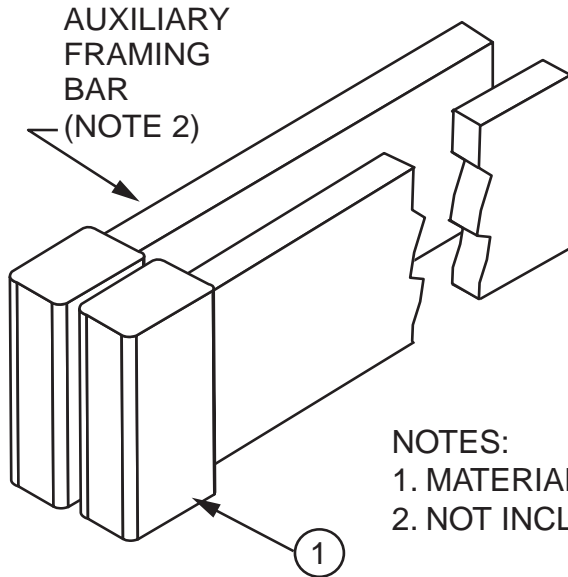
NOTES:
 1. FINISH IS ZINC PLATED AND GOLD CHROMATE.
 2. NOT INCLUDED; REFER TO FIG. 001022.

SUPPORTING PARALLEL AUXILIARY FRAMING CHANNEL FROM UNEQUAL FLANGE RACK

ORDERING NUMBER: 0010570110
FIG. 001057

STOCK LIST

ITEM	QTY	DESCRIPTION
1	2	RUBBER CAP



NOTES:

- 1. MATERIAL IS ABS BLACK RUBBER, 50 DUROMETER.
- 2. NOT INCLUDED; REFER TO FIG. 001021.

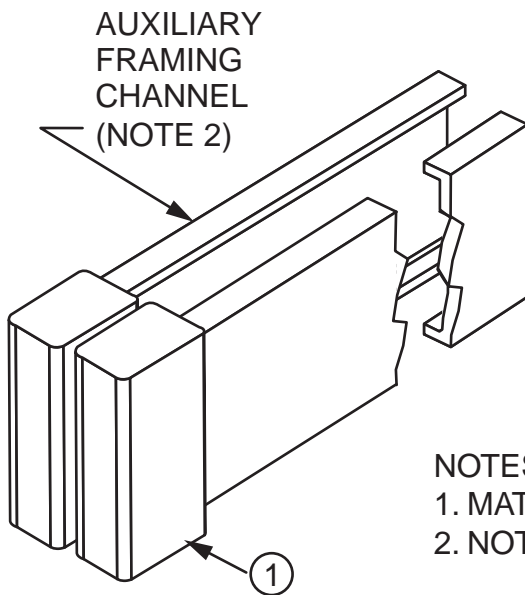
RUBBER FINISHING CAP FOR AUXILIARY FRAMING BAR

ORDERING NUMBER: 0010580000

FIG. 001058

STOCK LIST

ITEM	QTY	DESCRIPTION
1	2	RUBBER CAP



NOTES:

- 1. MATERIAL IS BLACK ABS RUBBER, 50 DUROMETER.
- 2. NOT INCLUDED; REFER TO FIG. 001022.

RUBBER FINISHING CAP FOR AUXILIARY FRAMING CHANNEL

ORDERING NUMBER: 0010580100

FIG. 001058

ORDERING TABLE

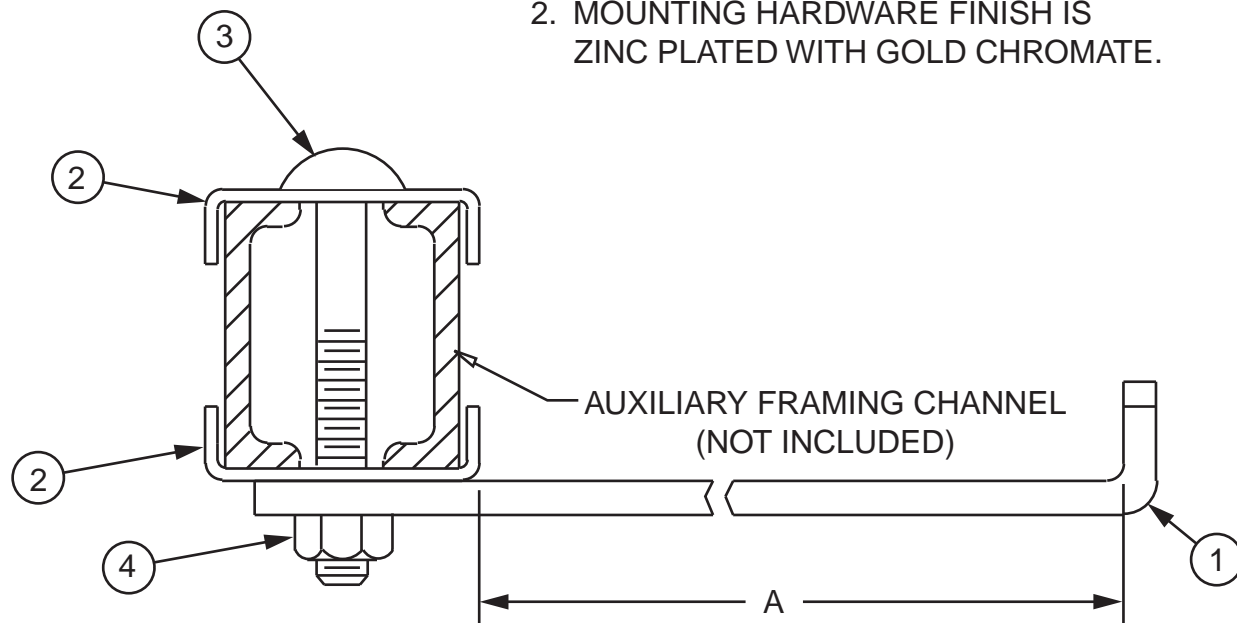
ORDERING NO.	DIM A
21005000XX	8"
21005001XX	5"

STOCK LIST

ITEM	QTY	DESCRIPTION
1	1	CABLE BRACKET
2	2	CLIP
3	1	CARRIAGE BOLT
4	1	3/8-16 HEX NUT

NOTES:

1. XX = FINISH CODE; STANDARD FINISH, XX = 30.
2. MOUNTING HARDWARE FINISH IS ZINC PLATED WITH GOLD CHROMATE.



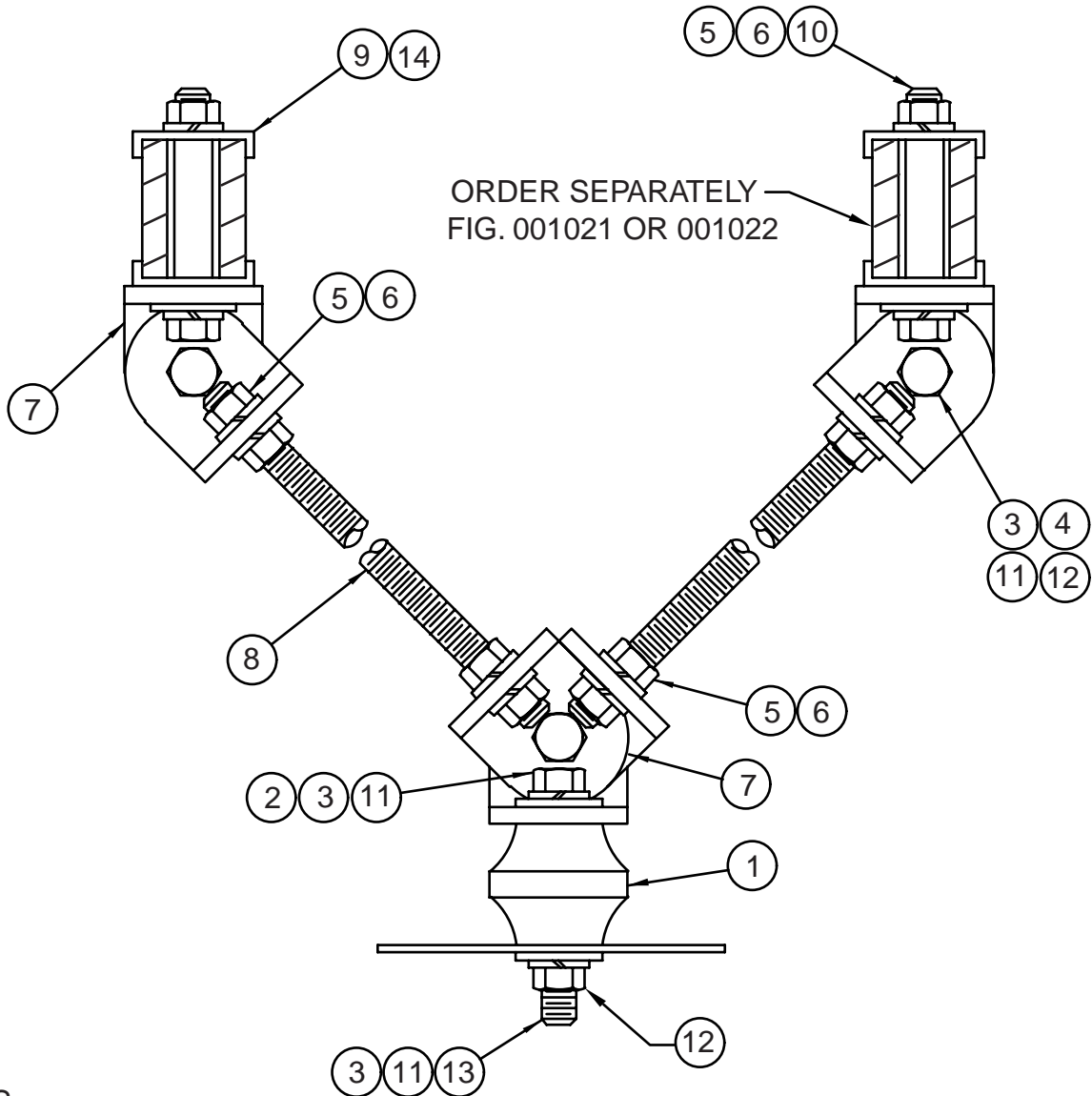
ORDERING NUMBER: REFER TO TABLE

POWER CABLE BRACKET ATTACHED TO AUXILIARY CHANNEL

FIG. 210050

STOCK LIST

ITEM	QTY	DESCRIPTION	ITEM	QTY	DESCRIPTION
1	1	POLY FIBERGLASS INSULATOR	8	2	5/8-11 X 48 THREADED ROD
2	1	1/2-13 X 1 HHCS	9	4	FRAMING CLIP
3	5	1/2 LOCK WASHER	10	2	5/8-11 X 3 HHCS
4	3	1/2-13 X 2 HHCS	11	5	1/2 FLAT WASHER
5	10	5/8 LOCK WASHER	12	4	1/2-13 HEX NUT
6	10	5/8-11 HEX NUT	13	1	1/2-13 X 4 THREADED ROD
7	7	BRACKET	14	4	1-7/8 FRAMING CLIP



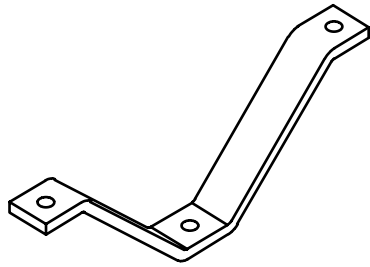
NOTES:

1. FINISH IS ZINC PLATED AND GOLD CHROMATE.
2. INSULATOR MATERIAL IS RATED U.L. 94 V-1 AND HAS AN OXYGEN INDEX RATING OF GREATER THAN 29.

ORDERING NUMBER: 2106040010

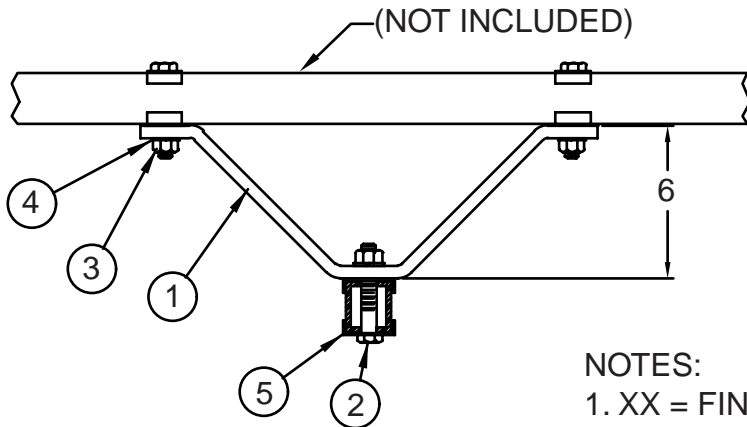
BRACING ASSEMBLY, INSULATED

FIG. 210604



STOCK LIST

ITEM	QTY	DESCRIPTION
1	1	BRACKET
2	3	5/8-11 X 3-1/2 HHCS
3	3	5/8-11 HEX NUT
4	3	5/8-11 LOCK WASHER
5	6	FRAMING CLIP



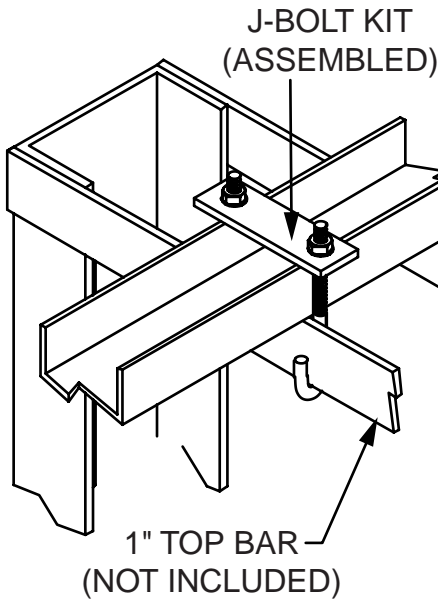
NOTES:

1. XX = FINISH CODE; STANDARD FINISH, XX = 30.

ORDERING NUMBER: 21314200XX

SUPPORT BRACKET BRACING KIT

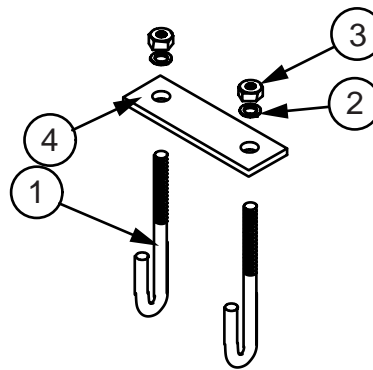
FIG. 213142



STOCK LIST

ITEM	QTY	DESCRIPTION
1	2	5/16 X 2-3/4 J-BOLT
2	2	5/16 LOCK WASHER
3	2	5/16-18 HEX NUT
4	1	MTG. PLATE

1" X 2" SUPPORT CHANNEL (NOT INCLUDED)



J-BOLT KIT

FIG. 212560