

## SECTION C, FIBER CABLE MANAGEMENT SYSTEM

FIGURE NUMBER	DESCRIPTION	PAGES
	GENERAL INFORMATION.....	C-ii
	CATALOG ORDER FORM.....	C-iii
DETAIL A	2"X2" AND 4"X4" FIBER CABLEWAY COMPONENTS.....	C-1
DETAIL A	4"X8" FIBER CABLEWAY COMPONENTS.....	C-2
DETAIL B	MOUNTING KITS FOR DIRECT ATTACHMENT.....	C-3
DETAIL C	MOUNTING KITS FOR USE WITH THREADED ROD.....	C-4
DETAIL D	FIBER CABLEWAY SYSTEM INSTALLATION.....	C-5
DETAIL E	CHANNEL SPLICE ASSEMBLY.....	C-7
DETAIL E	CHANNEL SPLICE ASSEMBLY, BOLTED / RIVETED.....	C-8
	CUSTOMIZATION.....	C-9

## **FIBER CABLE MANAGEMENT SYSTEM**

### **GENERAL INFORMATION**

THE FOLLOWING PAGES ARE REPRESENTATIVE OF THE PRODUCTS FOUND IN OUR COMPREHENSIVE FIBER CABLE MANAGEMENT SYSTEM CATALOG. NEWTON'S COMPLETE SYSTEM INCLUDES CHANNELS, FITTINGS, SUPPORT RAILS AND STRUTS, JUNCTION AND MOUNTING KITS, AND ACCESSORIES. INSTALLATION OPTIONS INCLUDE "UNITIZED", WELDED, PRE-DRILLED, AND CLIP ASSEMBLY. FLEXIBILITY AND SIMPLICITY MAKE OUR FIBER CABLE MANAGEMENT SYSTEM A COST-EFFECTIVE SOLUTION FOR NEW OR EXISTING FIBER CABLE ROUTING IN A CENTRAL OFFICE, CEV, REMOTE OFFICE, DATA CENTER, LAN OR OTHER APPLICATION.

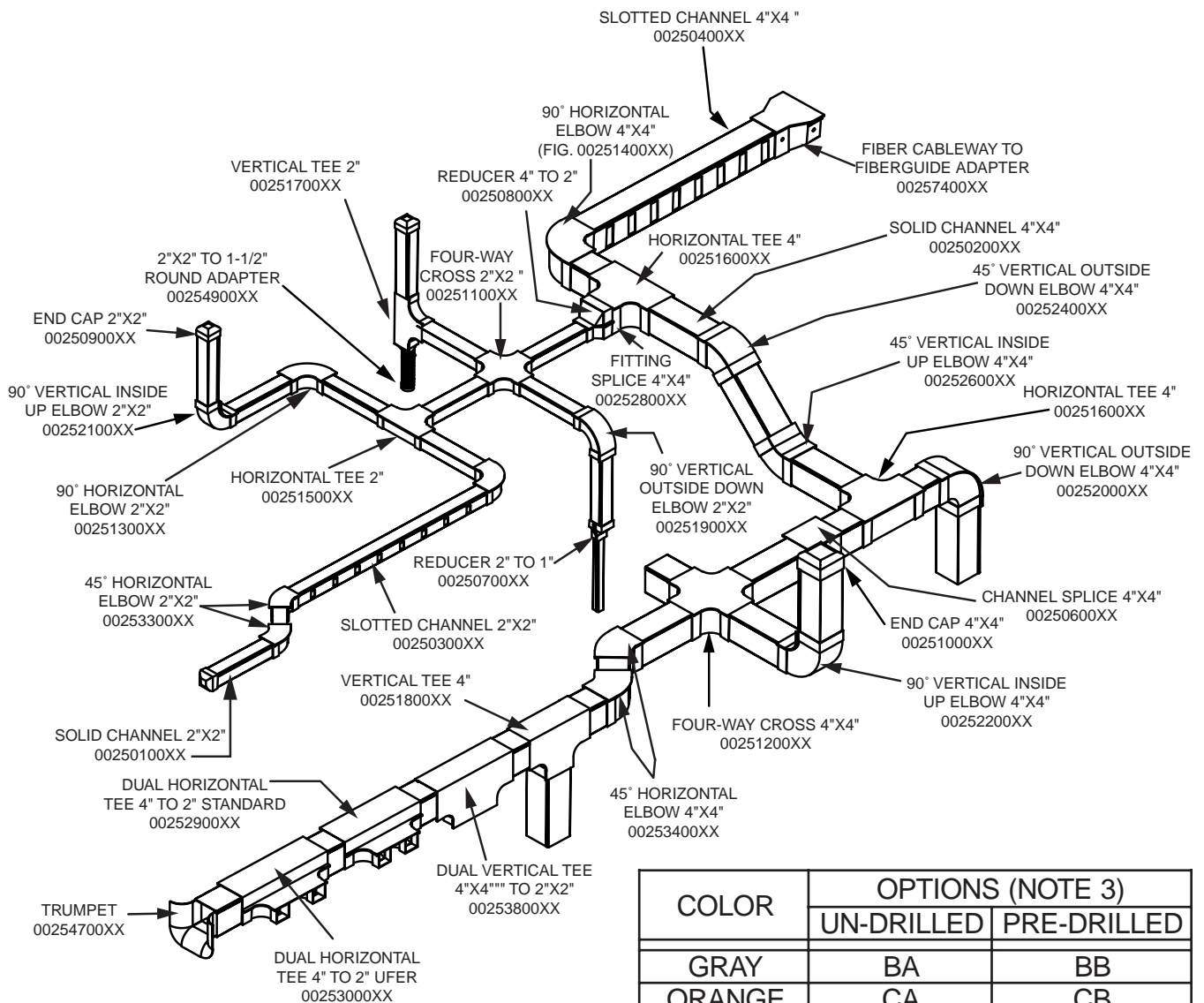
#### **CHANNELS AND FITTINGS**

SOLID CHANNELS, FOR STRAIGHT HORIZONTAL ROUTES, HAVE EITHER REMOVABLE HINGED OR SNAP-ON LIDS FOR FIBER ACCESSIBILITY. SLOTTED CHANNELS, FOR VERTICAL DROPS ALONG THE TOP OR SIDES OF FIBER DISTRIBUTION EQUIPMENT, HAVE EITHER HINGED OR SNAP-ON LIDS.

FITTINGS ARE PROVIDED IN A GROWING NUMBER OF CONFIGURATIONS FOR MAKING TURNS UPWARD, DOWNWARD, TO THE LEFT OR RIGHT, INTO OR ACROSS OTHER ROUTES, PERMITTING MANEUVERING OVER OR UNDER OBSTRUCTIONS.

#### **MOUNTING KITS**

MOUNTING KITS PROVIDE SUPPORT AND VERSATILITY FOR ATTACHING TO CABLE RACK, EQUIPMENT RACK, AUXILIARY FRAMING, OR SIMILAR ITEMS. WHEN THERE ARE NO EXISTING SUPPORTS, THE SYSTEM CAN BE INSTALLED ON NEWTON ALUMINUM SUPPORT RAILS OR STRUTS.



COLOR	OPTIONS (NOTE 3)	
	UN-DRILLED	PRE-DRILLED
GRAY	BA	BB
ORANGE	CA	CB
YELLOW	DA	DB

**COLORS**

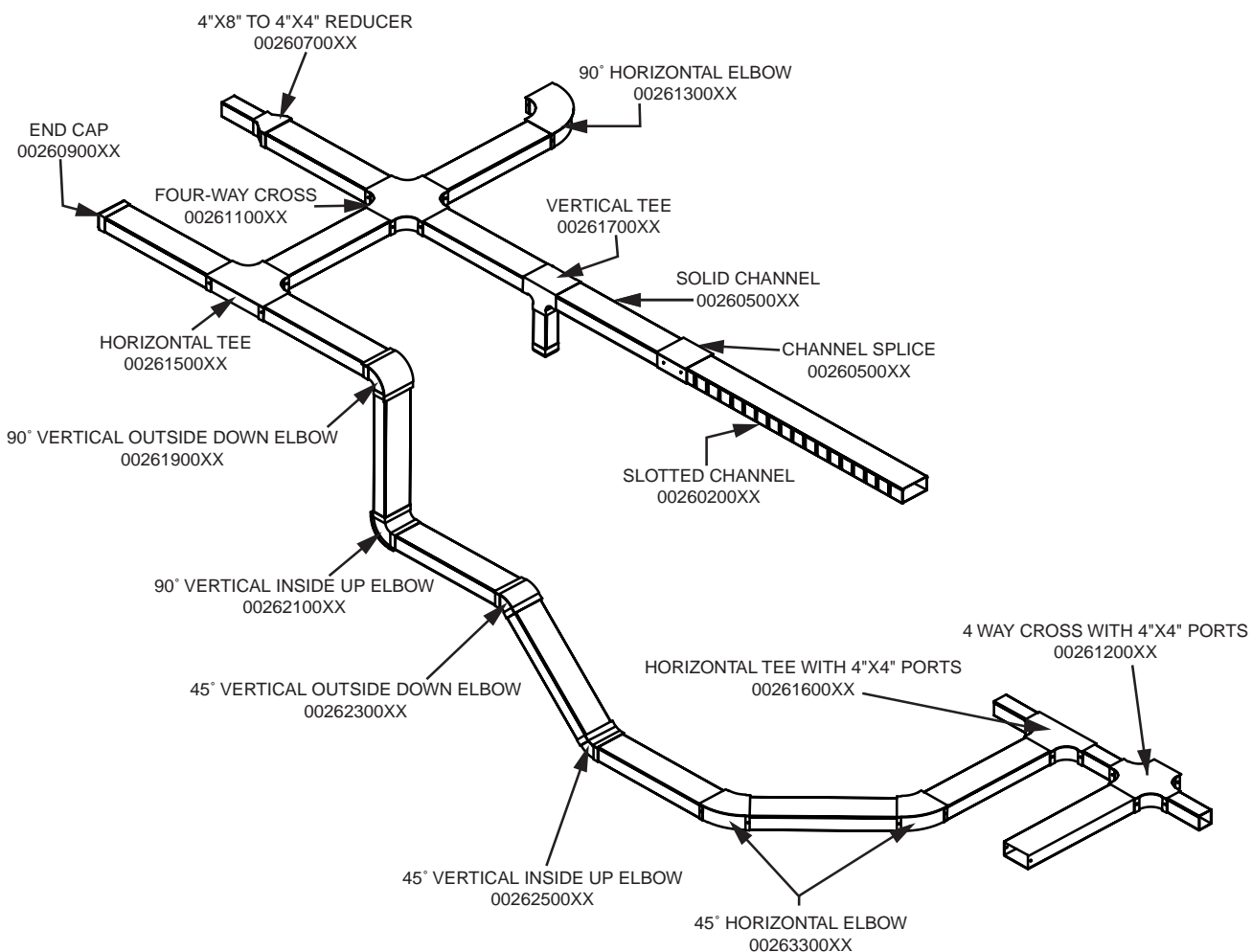
NEWTON'S FIBER CABLE MANAGEMENT SYSTEM IS AVAILABLE IN THREE COLORS, AS NOTED IN THE TABLE ABOVE. ADDITIONAL COLORS ARE AVAILABLE UPON REQUEST.

**NOTES:**

1. ALL AVAILABLE FIBER CABLEWAY COMPONENTS NOT SHOWN.
2. MATERIAL: HIGH IMPACT THERMOPLASTIC, RATED UL 94 V-0.
3. REPLACE XX IN THE TEN CHARACTER ORDERING NUMBER BY THE OPTION CODE TO DEFINE THE COLOR / OPTION DESIRED.

2" X 2" AND 4" X 4" FIBER CABLEWAY COMPONENTS

**DETAIL A**



COLOR	OPTIONS (NOTE 3)	
	UN-DRILLED	PRE-DRILLED
GRAY	BA	BB
ORANGE	CA	CB
YELLOW	DA	DB

**COLORS**

NEWTON'S FIBER CABLEWAY SYSTEM IS AVAILABLE IN THREE COLORS, AS NOTED IN THE TABLE ABOVE. ADDITIONAL COLORS ARE AVAILABLE UPON REQUEST.

**NOTES:**

1. ALL AVAILABLE FIBER CABLEWAY COMPONENTS NOT SHOWN.
2. MATERIAL: HIGH IMPACT THERMOPLASTIC, RATED UL 94 V-0.
3. REPLACE XX IN THE TEN CHARACTER ORDERING NUMBER BY THE OPTION CODE TO DEFINE THE COLOR / OPTION DESIRED.

4" X 8" FIBER CABLEWAY COMPONENTS

**DETAIL A**

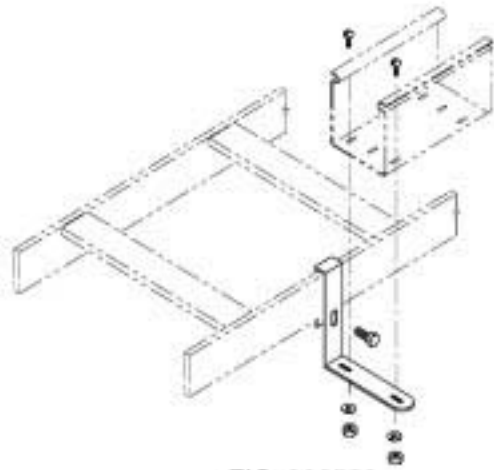


FIG. 002550  
LADDER RACK  
MOUNTING KIT

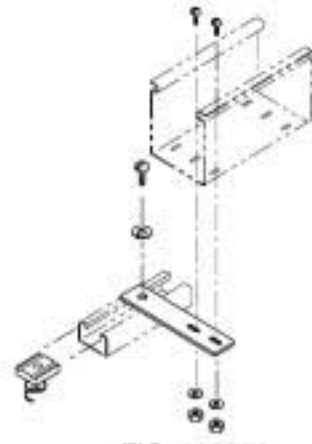


FIG. 002556  
STRUT STRAIGHT BRACKET  
MOUNTING KIT

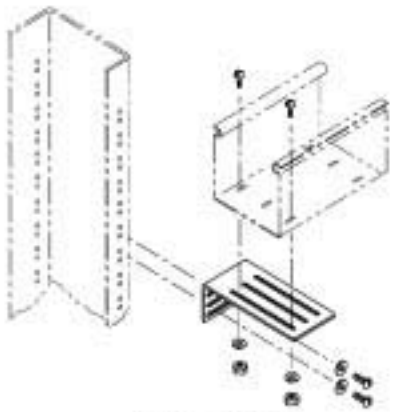


FIG. 002557  
EQUIPMENT RACK HORIZONTAL  
MOUNTING KIT

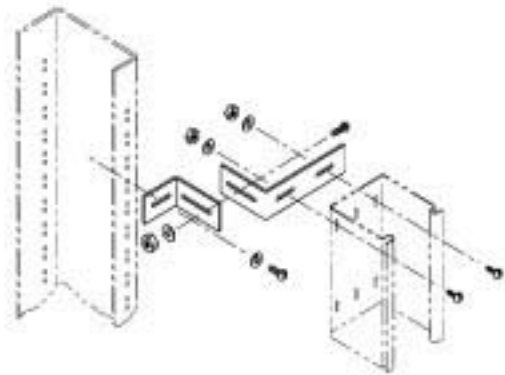


FIG. 002558  
EQUIPMENT RACK VERTICAL  
MOUNTING KIT

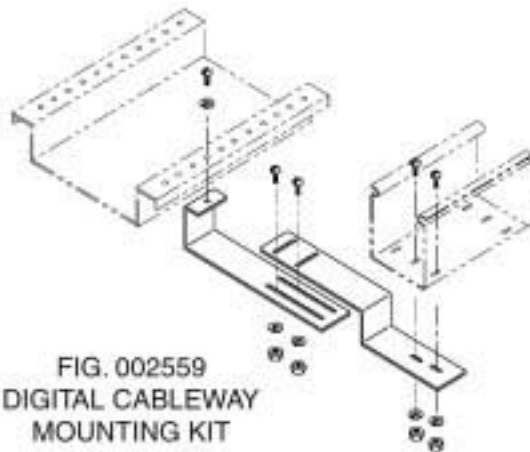


FIG. 002559  
DIGITAL CABLEWAY  
MOUNTING KIT

MOUNTING KITS FOR DIRECT ATTACHMENT;  
REFER TO INDIVIDUAL PRODUCT INFORMATION FOR DETAILS

DETAIL B

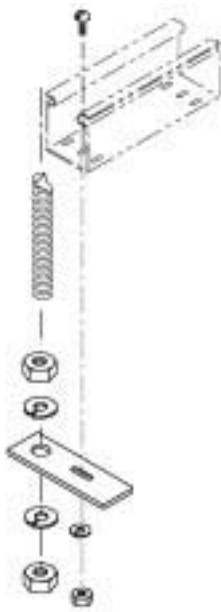


FIG. 002551  
END ACCESSIBLE  
THREADED ROD  
MOUNTING KIT

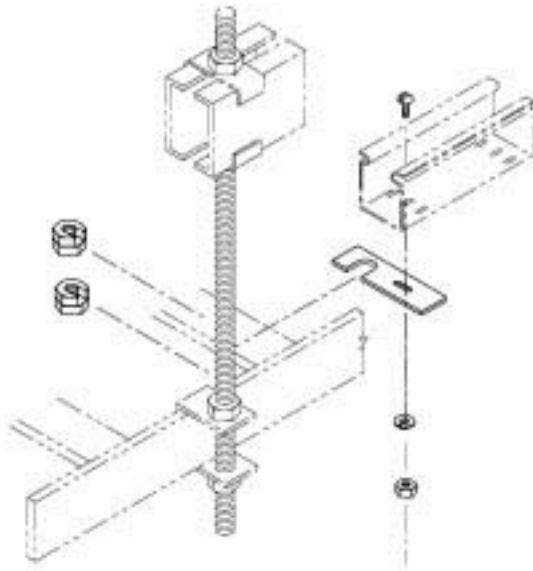


FIG. 002552  
THREADED ROD  
MOUNTING KIT

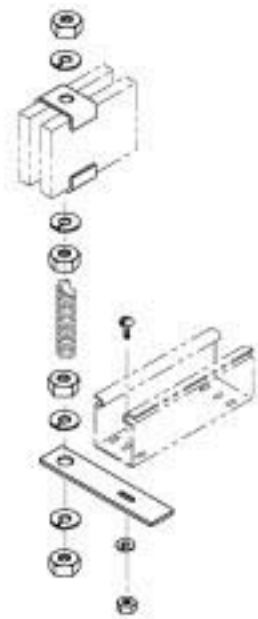


FIG. 002553  
PARALLEL  
AUXILIARY BAR  
MOUNTING KIT

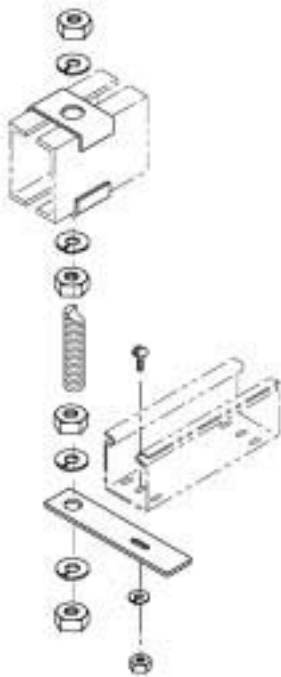


FIG. 002554  
PARALLEL AUXILIARY CHANNEL  
MOUNTING KIT

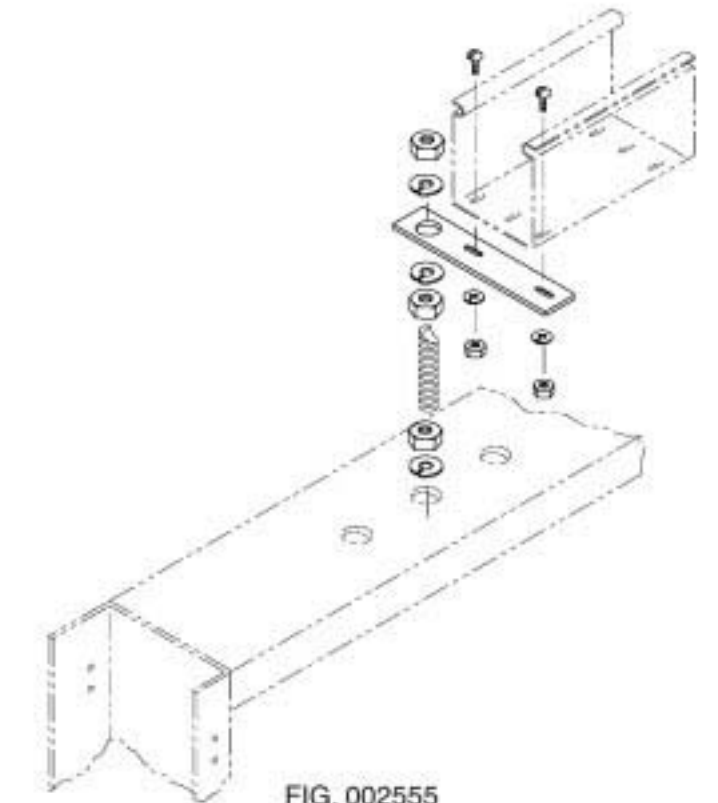
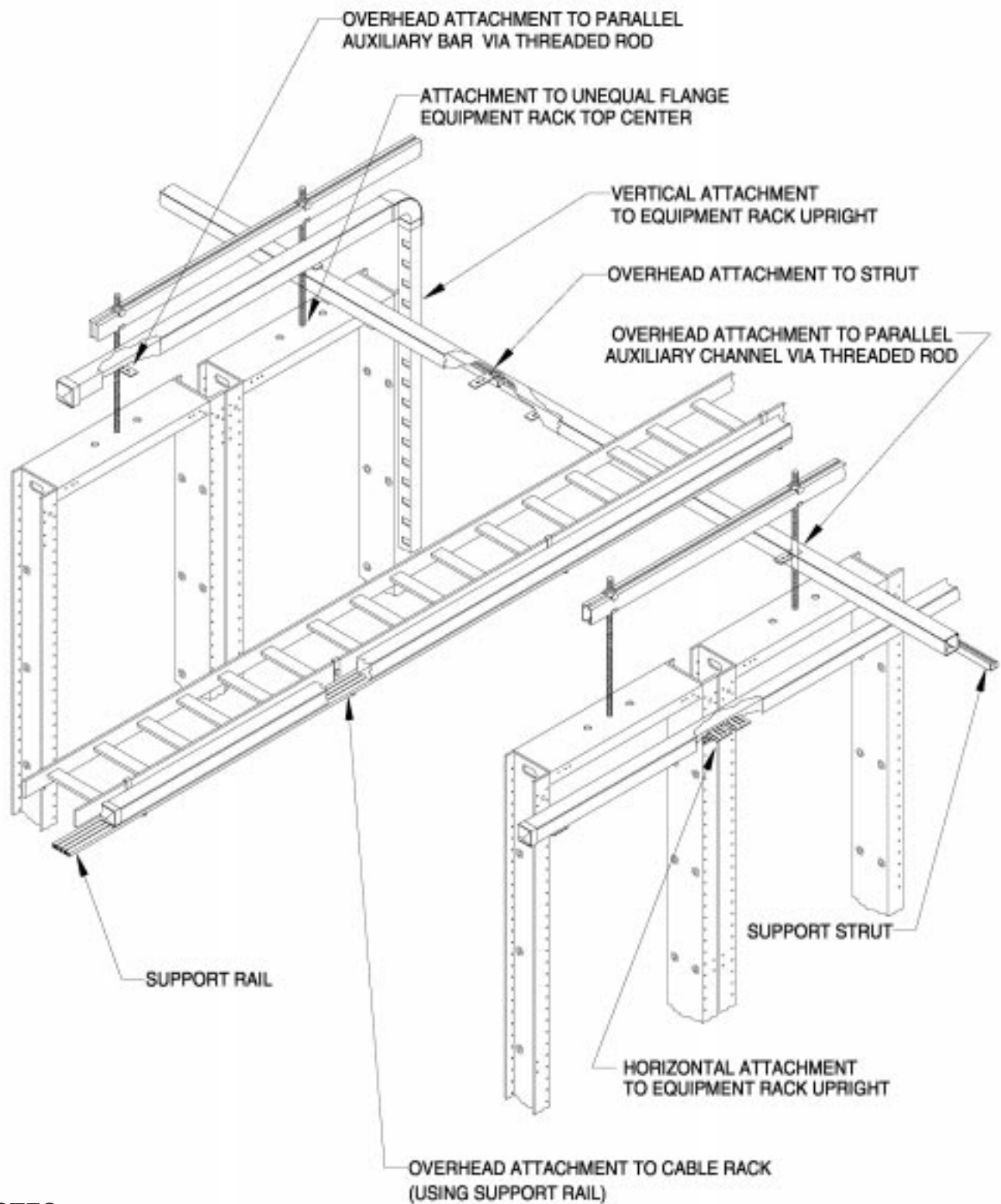


FIG. 002555  
UNEQUAL FLANGE EQUIPMENT RACK CENTER TOP  
MOUNTING KIT

MOUNTING KITS FOR USE WITH THREADED ROD;  
REFER TO INDIVIDUAL PRODUCT INFORMATION FOR DETAILS

DETAIL C

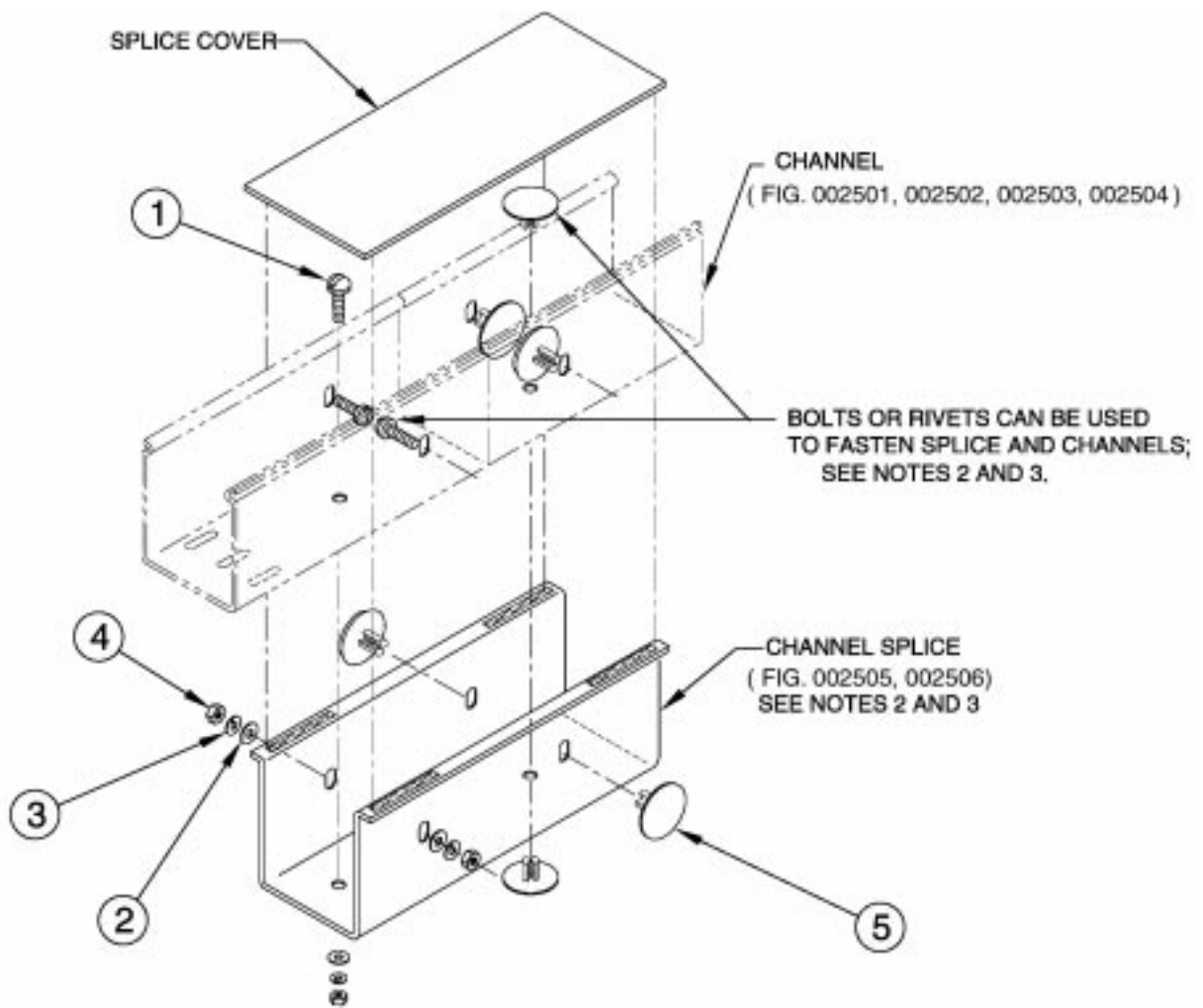


NOTES:

1. THIS REPRESENTATION PORTRAYS A FEW OF THE MANY POSSIBILITIES WHEN INSTALLING A FIBER CABLEWAY SYSTEM.

FIBER CABLEWAY SYSTEM INSTALLATION

DETAIL D

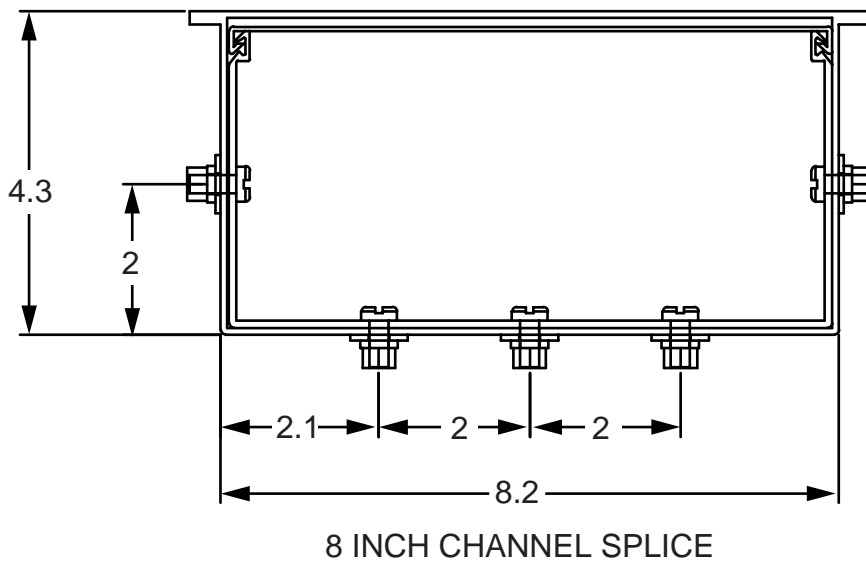
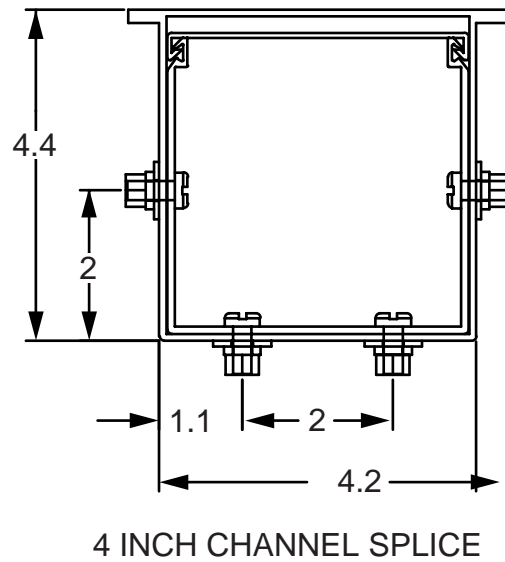
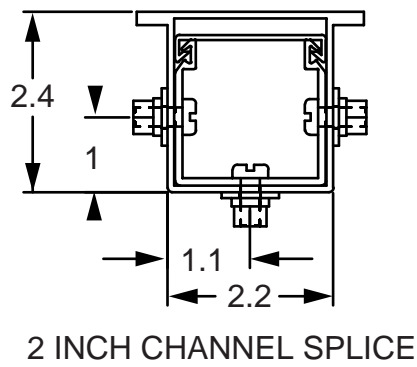


NOTES :

1. USE CHANNEL SPLICE TO JOIN TWO PIECES OF CHANNEL (SOLID OR SLOTTED).
2. 2" CHANNEL SHOWN. 2" CHANNEL USES ONE FASTENER THROUGH THE BOTTOM;  
4" CHANNEL USES TWO FASTENERS THROUGH THE BOTTOM.
3. SEPARATELY ORDER HARDWARE KIT AS NEEDED:
  - A) FIG. 002571 PROVIDES PLASTIC RIVET.
  - B) FIG. 002575 PROVIDES 1/4-20 HARDWARE.
  - C) FIG. 002576 PROVIDES 10-32 HARDWARE.

CHANNEL SPLICE ASSEMBLY

DETAIL E



**INSTALLATION INSTRUCTIONS:**

1. POSITION THE END OF ONE CHANNEL HALF WAY INTO THE CHANNEL SPLICE AND DRILL 9/32" HOLE ON EACH SIDE THROUGH BOTH COMPONENTS.
2. USE 1/4-20 X 5/8 BOLTS (FIG. 2575) OR PLASTIC RIVETS (FIG. 002571) TO FASTEN CHANNEL AND SPLICE.
3. DRILL THE BOTTOM AND FASTEN. FOR 4" CHANNEL DRILL TWO HOLES IN THE BOTTOM.
4. BUTT THE SECOND CHANNEL TO THE FIRST AND FASTEN IN A SIMILAR MANNER. DO NOT LEAVE A GAP BETWEEN THE CHANNELS.

CHANNEL SPLICE ASSEMBLY, BOLTED / RIVETED

**DETAIL E**

## CUSTOMIZATION

NEWTON WILL PROVIDE A CUSTOM FIBER CABLE MANAGEMENT SYSTEM TO MEET YOUR NEEDS. AVAILABLE FEATURES INCLUDE A NEW "UNITIZED" DESIGN WHICH CAN REPLACE UP TO ELEVEN COMPONENT PARTS, A "HINGED LID" CHANNEL FOR EASY MAINTENANCE AND "SPRING CLIPS" FOR NO-TOOL ASSEMBLY. NEWTON CAN PRODUCE CHANNELS OF MULTIPLE WIDTHS, HEIGHTS AND CONFIGURATIONS.

### ASSEMBLY OPTIONS

- STANDARD
- PRE-DRILLED
- SPRING CLIP
- WELDED
- "UNITIZED"

