

## SECTION F, UNIVERSAL RACK MOUNTED ACCESSORIES

FIGURE NUMBER	DESCRIPTION	PAGES
FIG. 004026	MOUNTING PLATE FOR 1-3/4 SPACE (BLANK).....	F-1
FIG. 004027	BLANK FILLER PANEL.....	F-1
FIG. 004036 FIG. 004037	TERMINAL BLOCK MOUNTING BARS .....	F-2
FIG. 004076	SWITCH PANEL.....	F-3
FIG. 004063 FIG. 004064	CORD TROUGH.....	F-4
FIG. 004065 FIG. 004066	FANNING STRIP.....	F-4
FIG. 004067	MOUNTING BARS FOR MOUNTING TERMINAL BLOCKS TO EQUIPMENT RACKS (STATIONARY).....	F-5
FIG. 004068	MOUNTING BARS FOR HORIZONTALLY MOUNTING TERMINAL BLOCKS TO EQUIPMENT RACKS (STATIONARY).....	F-6
FIG. 004069	MOUNTING BARS FOR HORIZONTALLY MOUNTING TERMINAL BLOCKS TO EQUIPMENT RACKS (SWIVEL).....	F-7
FIG. 004080	CONVERTING EQUIPMENT RACK TO MAIN FRAME.....	F-8
FIG. 004078	HEAT DEFLECTOR.....	F-9
FIG. 004121 FIG. 004122	ANGLE MOUNTING BRACKET.....	F-9
FIG. 004060	WRITING SHELF, COLLAPSIBLE.....	F-10
FIG. 004061	WRITING SHELF WITH DRAWER, COLLAPSIBLE.....	F-11
FIG. 004062	EQUIPMENT SHELF.....	F-12
FIG. 004077	EQUIPMENT SHELF.....	F-13
FIG. 004126	EQUIPMENT SHELF.....	F-14

## SECTION F, UNIVERSAL RACK MOUNTED ACCESSORIES

FIGURE NUMBER	DESCRIPTION	PAGES
FIG. 004127	COMPUTER SHELF.....	F-15
FIG. 004128	KEYBOARD SHELF.....	F-16
FIG. 004133	EQUIPMENT SHELF.....	F-17
FIG. 004530	SHELF ASSEMBLY FOR 23" EQUIPMENT RACK.....	F-18
FIG. 210965	SHELF, VENTED, 19" MOUNTING.....	F-19
FIG. 212114	SHELF ASSEMBLY, VENTED, 23" MOUNTING.....	F-20
FIG. 212421	SHELF, VENTED, 19" MOUNTING.....	F-21
FIG. 212579	SHELF, FOR CISCO 7000/ 7513 ROUTER.....	F-22
FIG. 212507	WRITING SHELF ASSEMBLY, WITH PULL-OUT DRAWER.....	F-23
FIG. 004129	WIRE MANAGEMENT PANEL.....	F-24
FIG. 004134	WIRE MANAGEMENT PANEL.....	F-25
FIG. 004135	WIRE MANAGEMENT PANEL.....	F-26
FIG. 214409	WIRE MANAGEMENT PANEL, 19".....	F-27
FIG. 213182 FIG. 213183	WIRE MANAGEMENT PANEL, 19".....	F-27
FIG. 004142	POWER STRIP, RACK MOUNTED, 10 OUTLETS, SURGE PROTECTED.....	F-29
FIG. 215558	POWER STRIP, RACK MOUNTED, 10 OUTLETS, SURGE PROTECTED.....	F-30
FIG. 757001 / 757002	FUSE PANEL, 19", GMT TYPE.....	F-31, 32
FIG. 004088	FUSE, GMT.....	F-33

## F. UNIVERSAL RACK MOUNTED ACCESSORIES

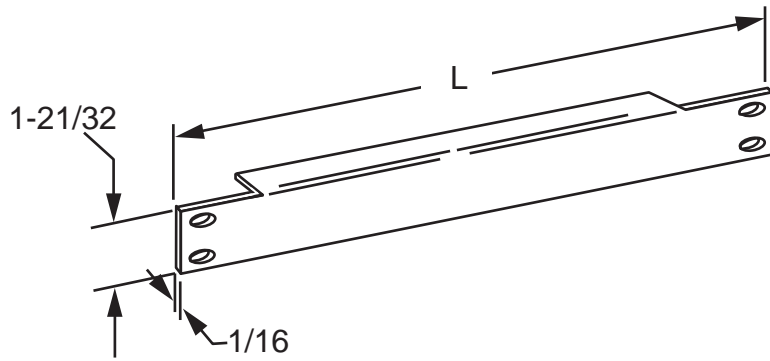
### NOTES:

1. ITEMS IN THIS SECTION ARE RACK-MOUNTABLE IN A WIDE VARIETY OF EQUIPMENT RACK TYPES.
2. RACK MOUNTED GROUND BARS ARE LOCATED IN SECTION G, GROUNDING AND ISOLATION / INSULATION PRODUCTS.
2. ITEMS INCLUDED IN THIS SECTION ARE REPRESENTATIVE OF A WIDE VARIETY AVAILABLE. IF YOU DO NOT FIND EXACTLY WHAT YOU NEED FOR YOUR APPLICATION, PLEASE COMMUNICATE WITH YOUR NEWTON CUSTOMER SERVICE REPRESENTATIVE.

PHONE: (919) 575-6426

FAX: (919) 575- 4708

OR VISIT OUR WEB SITE AT [www.newtoninst.com](http://www.newtoninst.com)



ORDERING TABLE

ORDERING NO.	L
00402601XX	19"
00402602XX	23"

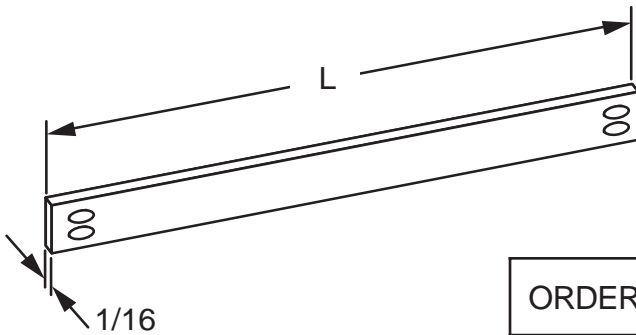
NOTES:

1. XX= FINISH CODE; STANDARD FINISH, XX=30.

ORDERING NUMBER: REFER TO TABLE

MOUNTING PLATE FOR 1-3/4 SPACE (BLANK)

FIG. 004026



ORDERING TABLE

ORDERING NO.	L	1-3/4" MTG. SPACES	SCREW QTY. 12-24 X 1/2"
00402701XX	19"	1	4
00402702XX	19"	2	4
00402703XX	19"	3	4
00402704XX	19"	4	6
00402705XX	19"	5	6
00402706XX	23"	1	4
00402707XX	23"	2	4
00402708XX	23"	3	4
00402709XX	23"	4	6
00402710XX	23"	5	6

NOTES:

1. XX= FINISH CODE;  
STANDARD FINISH, XX=30.

ORDERING NUMBER: REFER TO TABLE

BLANK FILLER PANEL

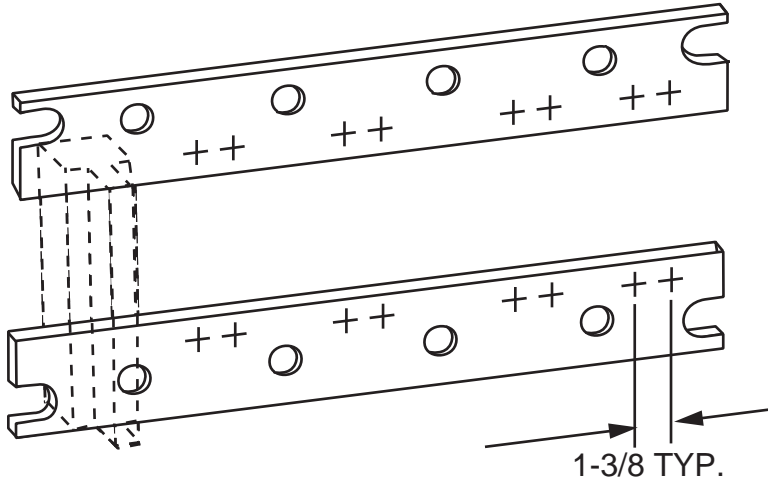
FIG. 004027

NOTES:

1. XX= FINISH CODE; STANDARD FINISH, XX= 30.

ORDERING TABLE

ORDERING NO.	LENGTH
00403600XX	19 (5 POSITIONS)
00403700XX	23 (6 POSITIONS)

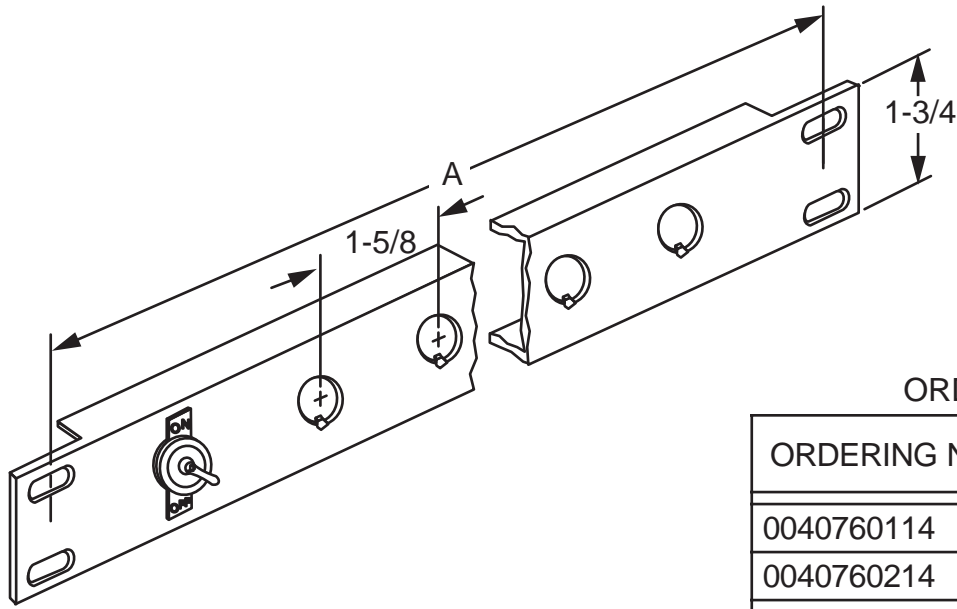


STOCK LIST

ITEM	QTY.	DESCRIPTION
1	2	TERMINAL BAR
2	4	12-24 X 3/4" PHMS
3	4	5/8" FLAT WASHER

ORDERING NUMBER: REFER TO TABLE  
**FIG. 004036**  
**FIG. 004037**

TERMINAL BLOCK MOUNTING BARS



ORDERING TABLE

ORDERING NO.	DIM. "A"	SWITCH QTY.
0040760114	18-5/16"	1
0040760214	18-5/16"	2
0040760314	18-5/16"	3
0040760414	18-5/16"	4
0040760514	18-5/16"	5
0040760614	18-5/16"	6
0040760714	18-5/16"	7
0040760814	18-5/16"	8
0040760914	18-5/16"	9
0040761014	18-5/16"	10
0040761114	22-5/16"	11
0040761214	22-5/16"	12
0040761314	22-5/16"	13
0040761414	22-5/16"	14
0040761514	22-5/16"	15
0040761614	22-5/16"	16
0040761714	22-5/16"	17
0040761814	22-5/16"	18
0040761914	22-5/16"	19
0040762014	22-5/16"	20
0040762114	22-5/16"	21
0040762214	22-5/16"	22

NOTES:

1. SWITCH IS SINGLE POLE TOGGLE  
SWITCH E/W SOLDER TERMINALS;  
NOMINAL RATING: 3A@125V / 6A@250V.  
CIRCUIT: ON-OFF.
2. PANEL FINISH IS CLEAR ANODIZED  
OVER GRAINED ALUMINUM.

ORDERING NUMBER: REFER TO TABLE

FIG. 004076

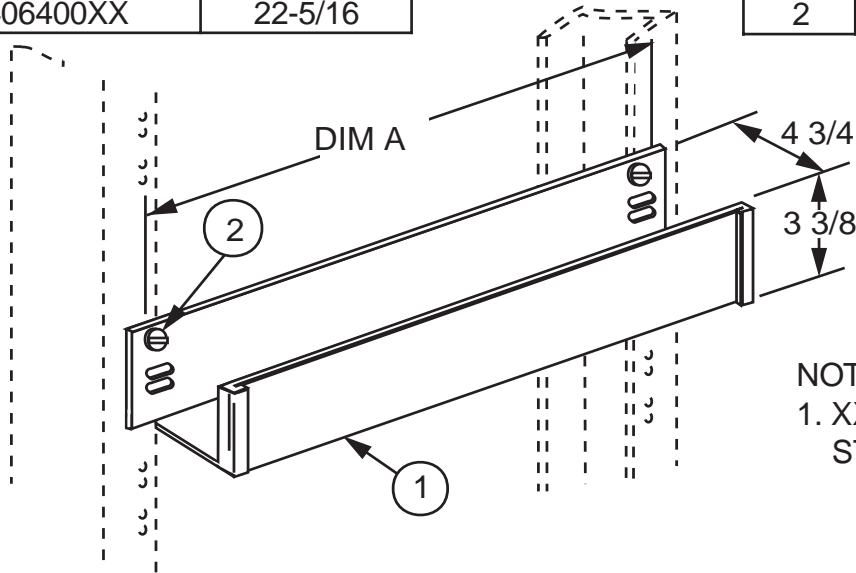
SWITCH PANEL

ORDERING TABLE

ORDERING NO.	DIM A
00406300XX	18-5/16
00406400XX	22-5/16

STOCK LIST

ITEM	QTY	DESCRIPTION
1	1	CORD TROUGH
2	4	12-24 X 3/8" PHMS



NOTES:  
 1. XX= FINISH CODE;  
 STANDARD FINISH, XX= 30.

ORDERING NUMBER: REFER TO TABLE  
**FIG. 004063**  
**FIG. 004064**

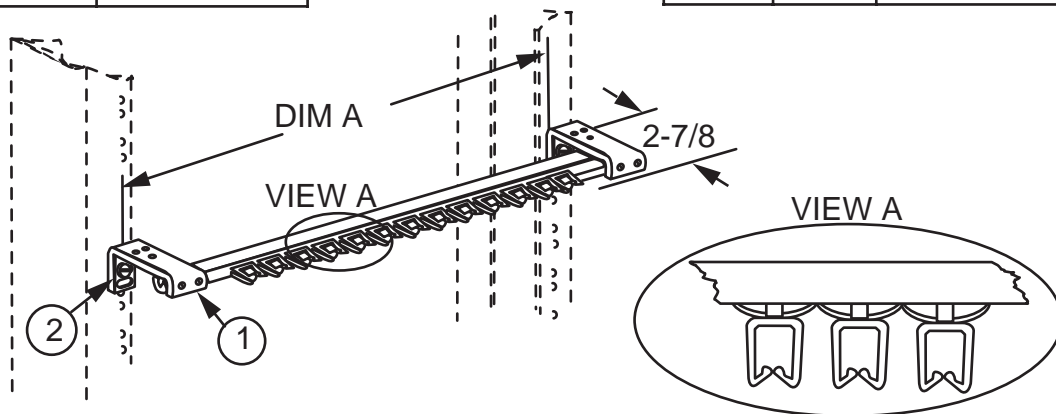
CORD TROUGH

ORDERING TABLE

ORDERING NO.	DIM A
00406500XX	18-5/16
00406600XX	22-5/16

STOCK LIST

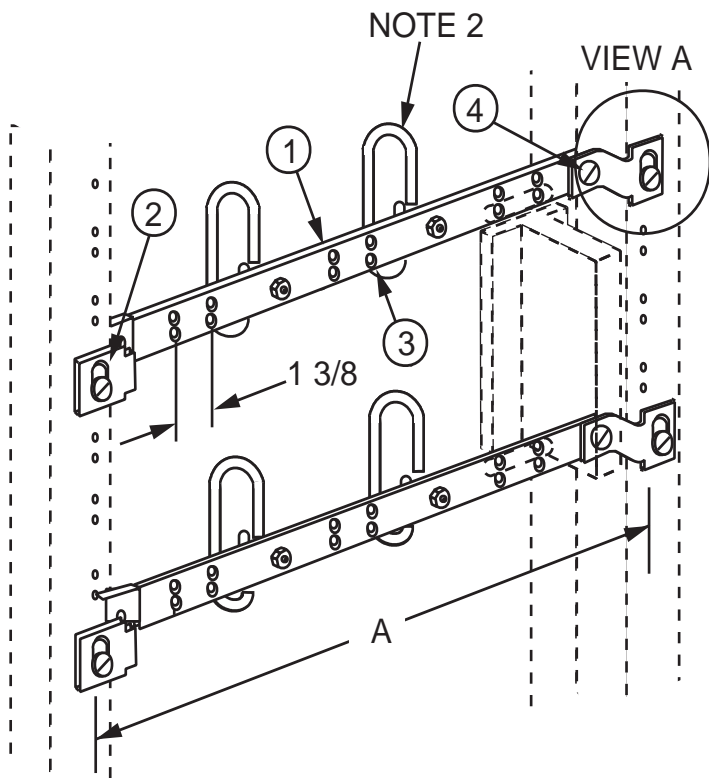
ITEM	QTY.	DESCRIPTION
1	1	FANNING STRIP
2	1	12-24 X 3/8" PHMS



NOTES:  
 1. XX= FINISH CODE; STANDARD FINISH,  
 XX= 30.  
 2. 19" RACK HAS 26 POSITIONS; 23" RACK  
 HAS 32 POSITIONS.

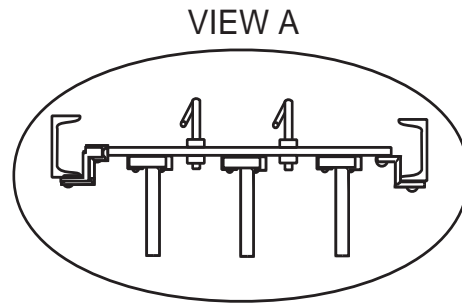
ORDERING NUMBER: REFER TO TABLE  
**FIG. 004065**  
**FIG. 004066**

FANNING STRIP



NOTES:

1. FOR THIS FIRST ROW OF BLOCKS, ORDER TWO (2) OF THIS FIGURE. FOR EACH ADDITIONAL ROW, ORDER ONLY ONE (1) MOUNTING BAR.
2. ORDER JUMPER RINGS (IF NEEDED) SEPARATELY; REFER TO FIG. 005045.



ORDERING TABLE

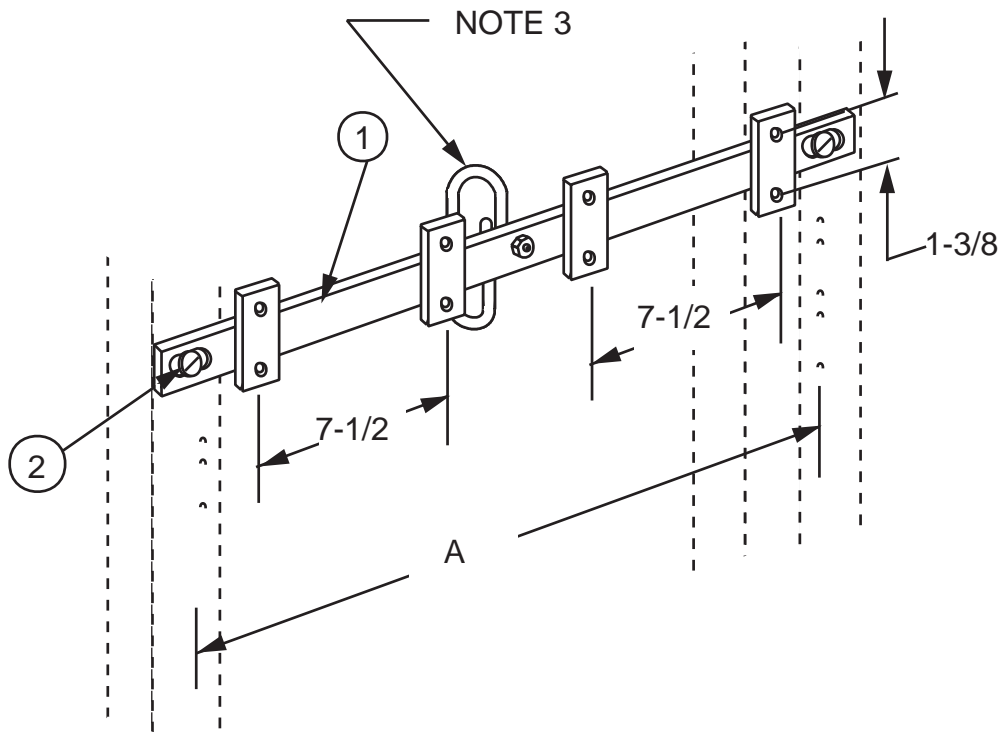
ORDERING NO.	DIM. A	BLOCK MTG. SPACES	JUMPER RING (NOTE 2)
0040670110	18-5/16"	3	2
0040670210	22-5/16"	3	2
0040670310	27-1/16"	4	3
0040670410	27-1/16"	5	4

STOCK LIST

ITEM	QTY.	DESCRIPTION
1	1	TERMINAL BLOCK MOUNTING BAR
2	2	END CLIP
3	2	12-24 X 3/4" PHMS
4	2	1/4-20 X 5/8" RHMS

MOUNTING BARS FOR MOUNTING TERMINAL BLOCKS TO EQUIPMENT RACKS (STATIONARY)

ORDERING NUMBER: REFER TO TABLE  
**FIG. 004067**



NOTES:

1. XX= FINISH CODE; STANDARD FINISH, XX= 30.
2. BAR WILL MOUNT TWO (2) TERMINAL BLOCKS HORIZONTALLY.
3. ORDER JUMPER RING SEPARATELY (IF NEEDED); REFER TO FIG. 005045.

ORDERING TABLE

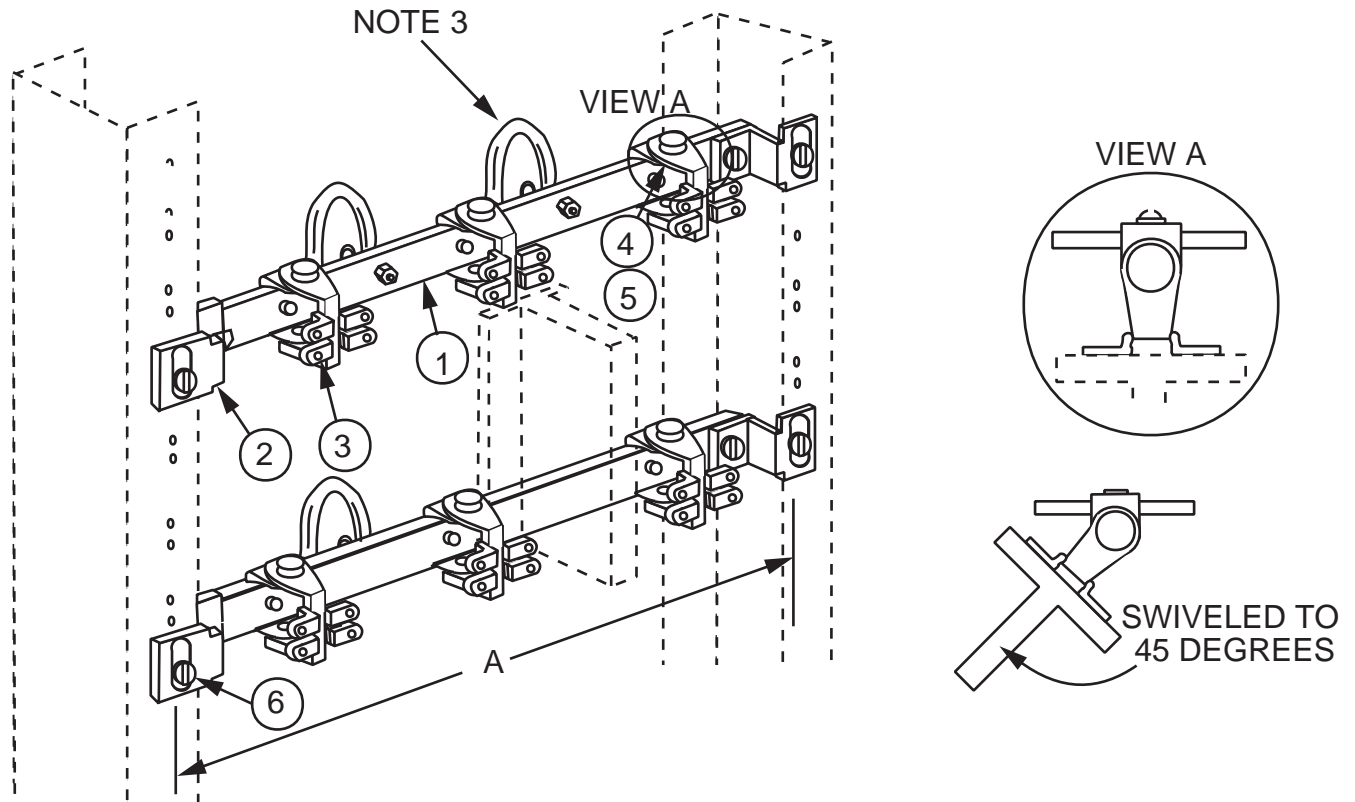
ORDERING NO.	DIM. A
00406801XX	18-5/16"
00406802XX	22-5/16"
00406803XX	27-1/16"

STOCK LIST

ITEM	QTY.	DESCRIPTION
1	1	MOUNTING BAR
2	2	12-24 X 1/2" PHMS

MOUNTING BARS FOR HORIZONTALLY MOUNTING TERMINAL BLOCKS TO EQUIPMENT RACKS (STATIONARY)

ORDERING NUMBER: REFER TO TABLE  
**FIG. 004068**



ORDERING TABLE

ORDERING NO.	DIM. A	BLOCK MTG. SPACES	JUMPER RING (NOTE 3)	STOCK LIST SUPPLIED
00406901XX	18-5/16"	3	2	1
00406902XX	22-5/16"	3	2	2
00406903XX	27-1/16"	4	3	3

STOCK LIST

NOTES:

1. XX= FINISH CODE; STANDARD FINISH, XX= 30.
2. BAR WILL MOUNT TWO (2) TERMINAL BLOCKS HORIZONTALLY.
3. ORDER JUMPER RING SEPARATELY (IF NEEDED); REFER TO FIG. 005045.

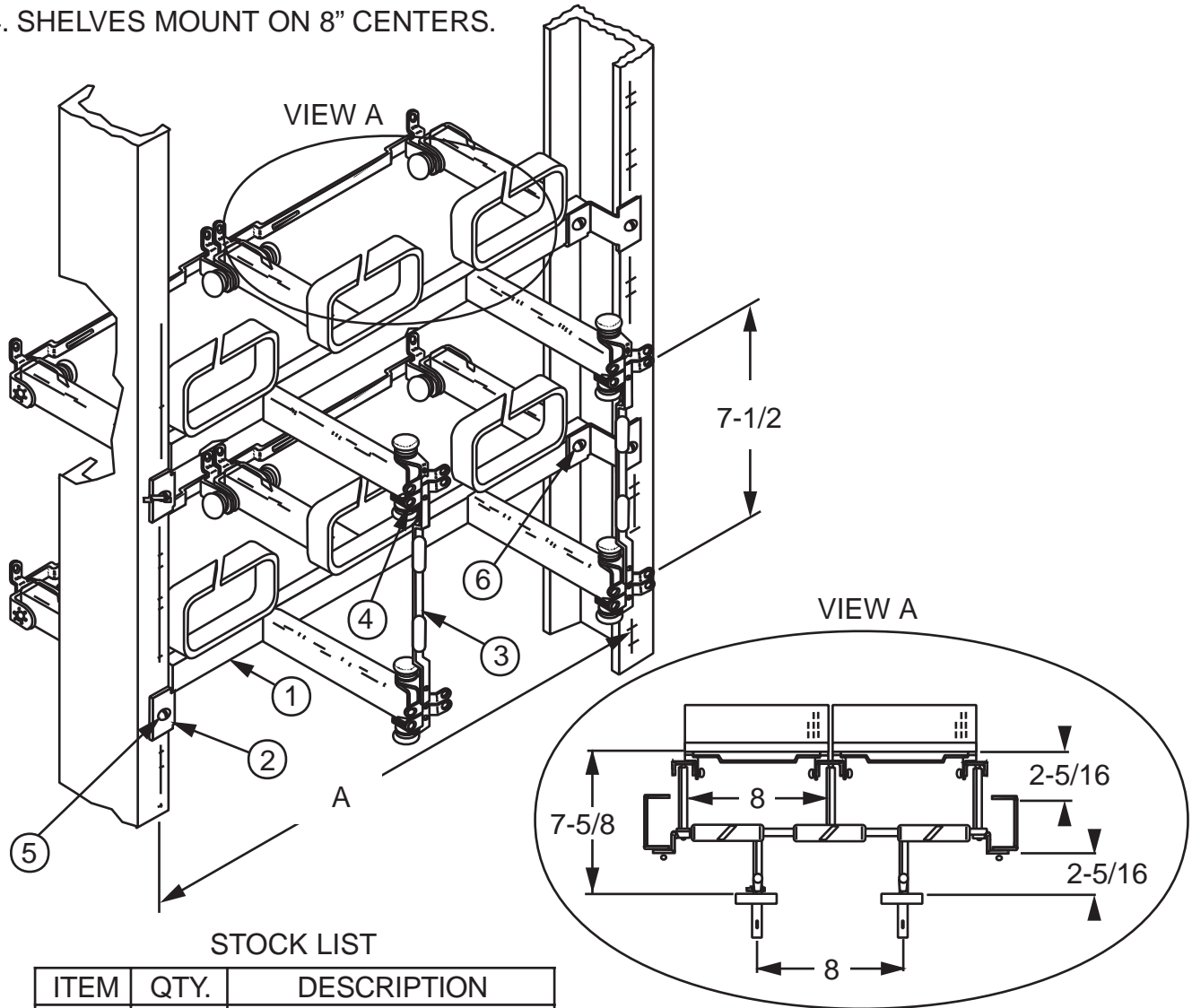
ITEM	DESCRIPTION	STOCK LIST		
		1	2	3
1	MOUNTING BAR	1	1	1
2	END CLIPS	2	2	2
3	SWIVEL CUPS	3	3	4
4	1/4-20 X 1/2" RHMS	5	5	6
5	1/4 LOCK WASHER	3	3	4
6	12-24 X 3/8" PHMS	2	2	2

MOUNTING BARS FOR HORIZONTALLY MOUNTING TERMINAL BLOCKS TO EQUIPMENT RACKS (SWIVEL)

ORDERING NUMBER: REFER TO TABLE  
**FIG. 004069**

NOTES:

1. XX= FINISH CODE; SHELF STANDARD FINISH, XX= 30. TERMINAL BLOCK, MOUNTING BRACKETS, CLIPS, ETC. ARE ZINC PLATED AND GOLD CHROMATE.
2. FOR THE FIRST ROW OF BLOCKS, ORDER TWO (2) OF THIS FIGURE. FOR EACH ADDITIONAL ROW, ORDER ONLY ONE (1).
3. TERMINAL BLOCKS MAY BE SWIVELED TO ONE SIDE 45 DEGREES FOR EASIER ACCESS.
4. SHELVES MOUNT ON 8" CENTERS.



STOCK LIST

ITEM	QTY.	DESCRIPTION
1	1	SHELF ASSEMBLY
2	2	CLIP
3	2	UN. STIFF. BARS
4	4	8-32 PHMS
5	2	12-24 7/16" PHMS
6	2	1/4-20 1/2" RHMS

ORDERING TABLE

ORDERING NO.	DIM. A
00408001XX	18-5/16"
00408002XX	22-5/16"

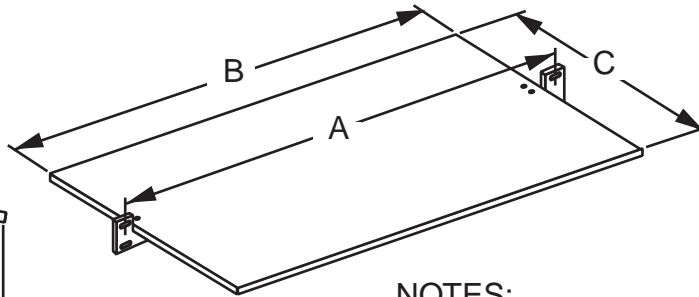
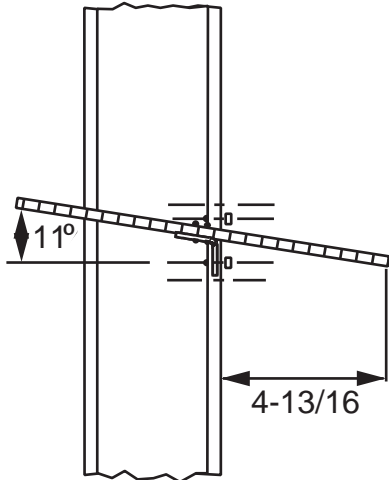
ORDERING NUMBER: REFER TO TABLE

CONVERTING EQUIPMENT RACK TO MAIN FRAME

FIG. 004080

ORDERING TABLE

ORDERING NO.	RACK SIZE	DIM. A	DIM. B	DIM. C
0040780114	19"	18-5/6"	17-5/16"	9-7/32"
0040780214	23"	22-5/6"	21-5/16"	9-7/32"



NOTES:

1. MATERIAL: ALUMINUM
2. TAKES UP ONE RACK SPACE.
3. INCLUDES FOUR 12-24 X 7/16" STAINLESS STEEL MOUNTING SCREWS.

ORDERING NUMBER: REFER TO TABLE

HEAT DEFLECTOR

FIG. 004078

NOTES:

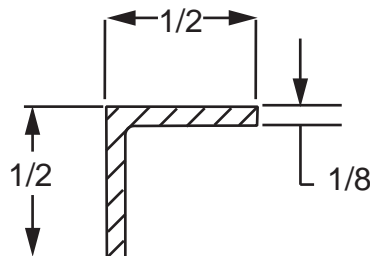
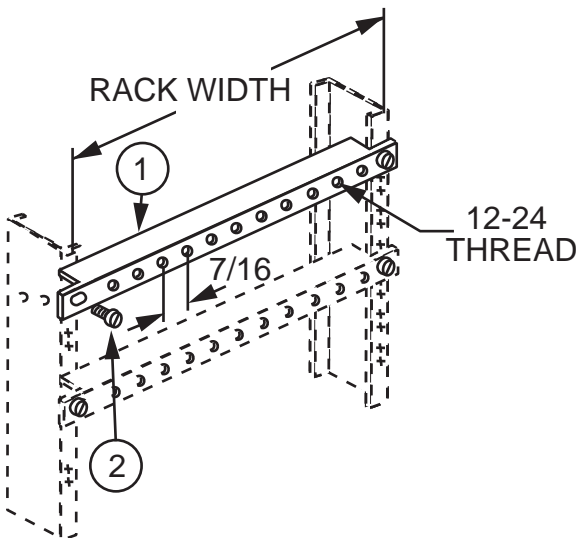
1. ANGLE BRACKETS ARE MADE OF COLD ROLLED STEEL ANGLE.
2. BRACKETS HAVE 12-24 TAPPED MOUNTING HOLES ON 7/16" CENTERS.

STOCK LIST

ITEM	QTY.	DESCRIPTION
1	1	MOUNTING BAR
2	2	12-24 X 7/16" PHMS

ORDERING TABLE

ORDERING NO.	RACK
0041210010	19
0041220010	23



ORDERING NUMBER: REFER TO TABLE

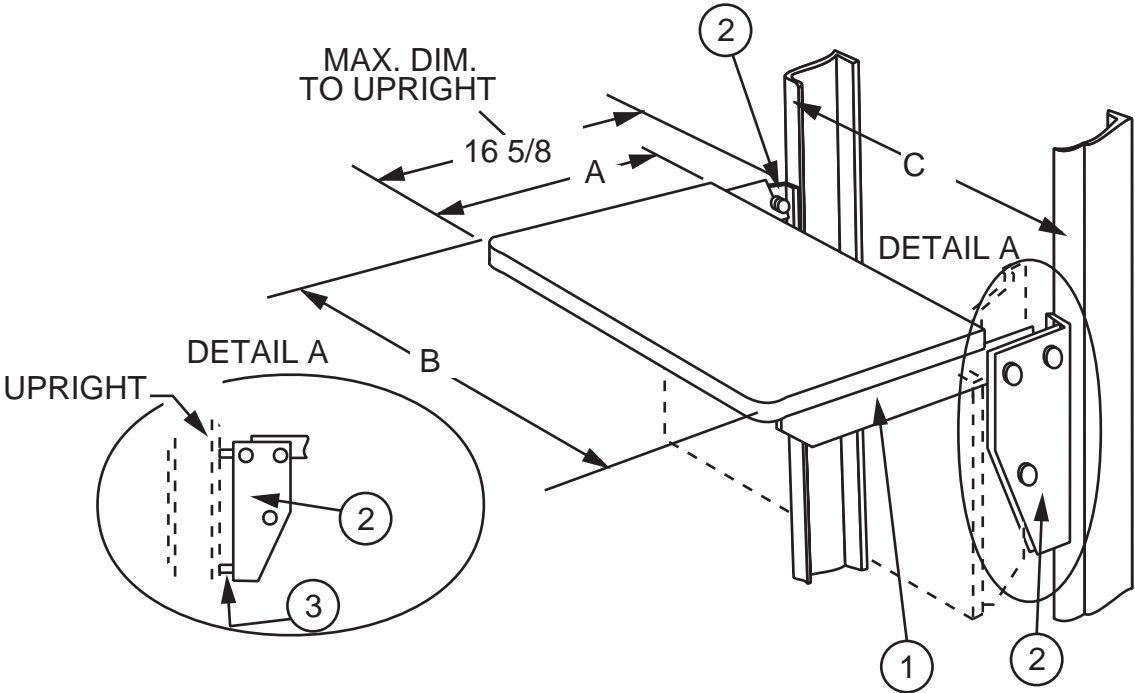
FIG. 004121

FIG. 004122

ANGLE MOUNTING BRACKET

STOCK LIST

ITEM	QTY.	DESCRIPTION
1	1	SHELF ASSEMBLY
2	2	SHELF BRACKET ASSEMBLY
3	1	DRAWER
4	4	3/8 IN. SPACER
5	4	12-24 X 3/4" PHMS



ORDERING TABLE

ORDERING NO.	DIM. A	DIM. B	DIM. C
00406001XX	10-1/2"	19-1/2"	18-5/16"
00406002XX	13-3/4"	19-1/2"	18-5/16"
00406003XX	10-1/2"	23-1/2"	22-5/16"
00406004XX	13-3/4"	23-1/2"	22-5/16"

NOTES:

- 1. XX= FINISH CODE; STANDARD FINISH, XX= 30.
- 2. SHELVES ARE EQUIPPED WITH SPACERS FOR OPTIONAL MOUNTING.

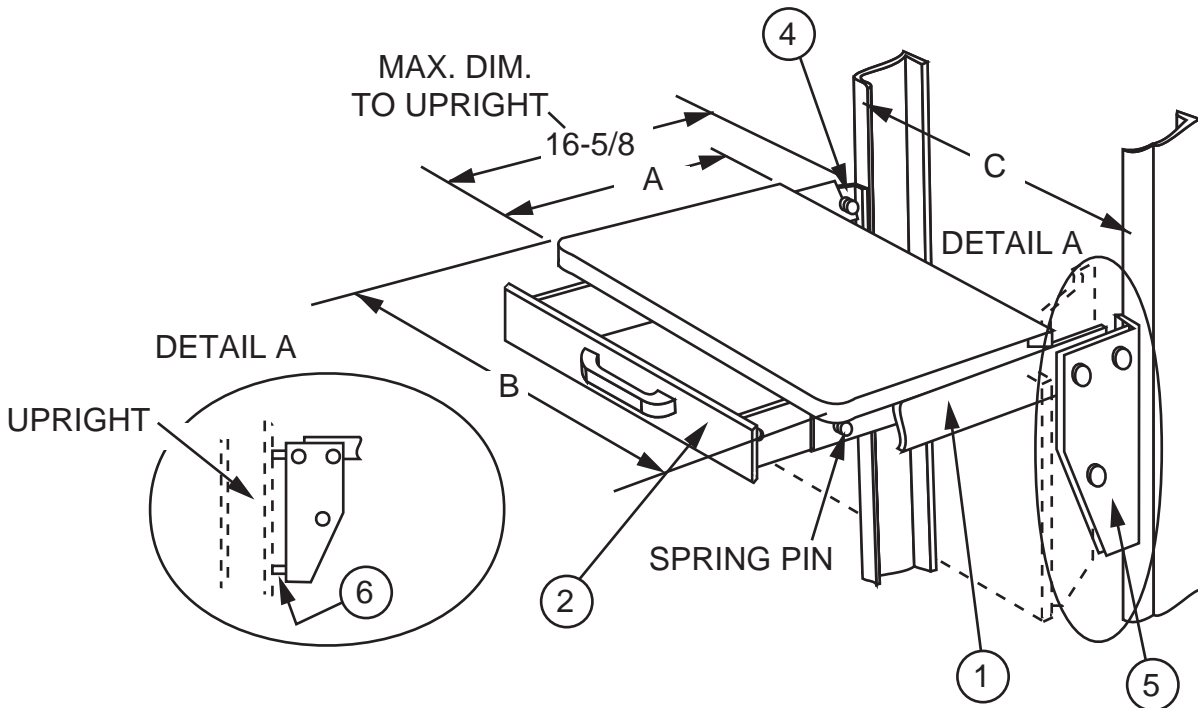
ORDERING NUMBER: 00406000XX

WRITING SHELF, COLLAPSIBLE

FIG. 004060

STOCK LIST

ITEM	QTY	DESCRIPTION
1	1	SHELF ASSEMBLY
2	1	DRAWER ASSEMBLY
3	4	12-24 X 3/4" PHMS
4	1	LEFT SHELF BRACKET
5	1	RIGHT SHELF BRACKET
6	4	SPACER



ORDERING TABLE

ORDERING NO.	DIM. A	DIM. B	DIM. C
00406101XX	13-3/4"	18-3/4"	19"
00406102XX	13-3/4"	22-3/4"	23"

NOTES:

1. XX= FINISH CODE; STANDARD FINISH, XX= 30.
2. DRAWER DIMENSIONS ARE 10-3/16 X 18-7/16 FOR 19" RACK AND 10-3/16 X 22-7/16 FOR 23" RACK.
3. SPRING PIN IS USED FOR LOCKING DRAWER IN PLACE WHEN IN DOWN POSITION.
4. SHELVES ARE EQUIPPED WITH SPACERS FOR OPTIONAL MOUNTING.

ORDERING NUMBER: REFER TO TABLE

WRITING SHELF WITH DRAWER, COLLAPSIBLE

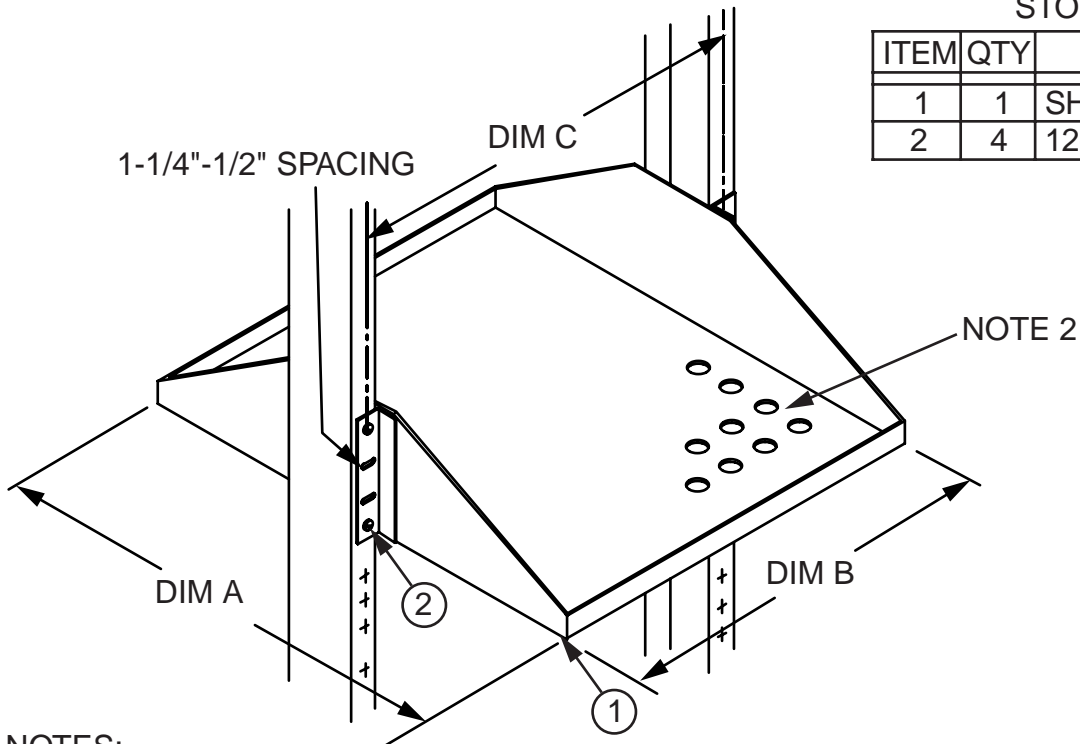
FIG. 004061

### ORDERING TABLE

ORDERING NO.	RACK SIZE	DIM. A	DIM. B	DIM. C	VENT HOLE SIZE
00406201XX	19"	11-1/2"	17-1/4"	18-5/16"	NONE
00406202XX	19"	13-1/2"	17-1/4"	18-5/16"	NONE
00406203XX	19"	15-1/2"	17-1/4"	18-5/16"	NONE
00406204XX	19"	19-1/2"	17-1/4"	18-5/16"	NONE
00406205XX	23"	11-1/2"	21-1/4"	22-5/16"	NONE
00406206XX	23"	13-1/2"	21-1/4"	22-5/16"	NONE
00406207XX	23"	15-1/2"	21-1/4"	22-5/16"	NONE
00406208XX	23"	19-1/2"	21-1/4"	22-5/16"	NONE
00406209XX	27"	11-1/2"	26"	27-1/16"	NONE
00406210XX	27"	13-1/2"	26"	27-1/16"	NONE
00406211XX	27"	15-1/2"	26"	27-1/16"	NONE
00406212XX	27"	19-1/2"	26"	27-1/16"	NONE
21057001XX	19"	24"	17-1/4"	18-5/16"	NONE
20340808XX	19"	27"	17-1/4"	18-5/16"	NONE
20340809XX	19"	24-1/2"	17-1/4"	18-5/16"	NONE
20340805XX	19"	19-1/2"	17-1/4"	18-5/16"	7/8
20340807XX	19"	19-1/2"	17-1/4"	18-5/16"	1/4

### STOCK LIST

ITEM	QTY	DESCRIPTION
1	1	SHELF ASSEMBLY
2	4	12-24 X 1/2" PHMS



**NOTES:**

1. XX = FINISH CODE; STANDARD FINISH, XX = 30.
2. HOLE PATTERN IS REPRESENTATIVE OF ENTIRE SHELF.
3. OTHER SHELF SIZES AVAILABLE UPON REQUEST.

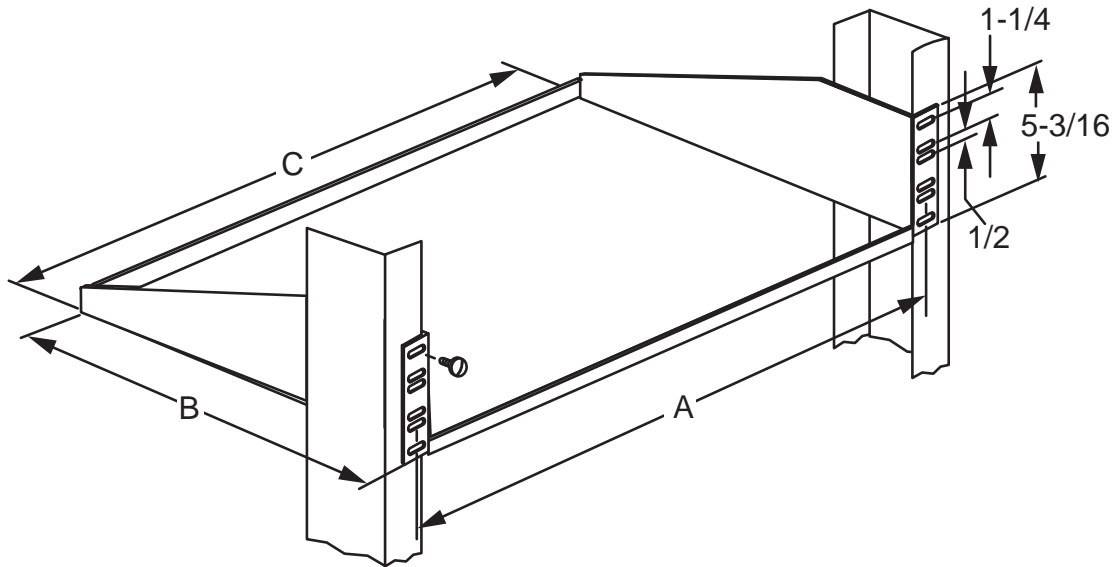
ORDERING NUMBER: REFER TO TABLE

EQUIPMENT SHELF

**FIG. 004062**

NOTES:

1. XX= FINISH CODE; STANDARD FINISH, XX= 30.
2. OTHER SHELF SIZES AVAILABLE UPON REQUEST.



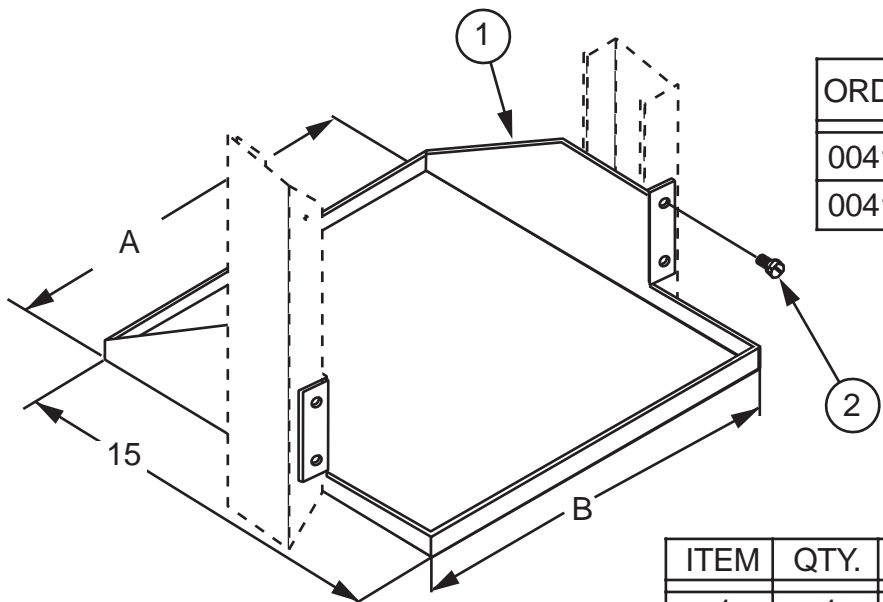
ORDERING TABLE

ORDERING NO.	RACK SIZE	DIM. A	DIM. B	DIM. C	12-24 X 1/2 PHMS
00407701XX	19"	18-5/6"	10	17-3/8"	12
00407702XX	19"	18-5/6"	12	17-3/8"	12
00407703XX	19"	18-5/6"	15	17-3/8"	12
00407704XX	23"	22-5/16"	10	21-3/8"	12
00407705XX	23"	22-5/16"	12	21-3/8"	12
00407706XX	23"	22-5/16"	15	21-3/8"	12

ORDERING NUMBER: REFER TO TABLE

EQUIPMENT SHELF

FIG. 004077



ORDERING TABLE

ORDERING NO.	DIM. A	DIM. B
00412601XX	17 1/4"	18 5/16"
00412602XX	21 1/4"	22 5/16"

STOCK LIST

ITEM	QTY.	DESCRIPTION
1	1	EQUIPMENT SHELF
2	4	12-24 X 1/2" TRI-LOBE SCREW

NOTES:  
 1. XX= FINISH CODE; STANDARD FINISH, XX= 30.  
 2. MATERIAL: 16 GA STEEL.

ORDERING NUMBER: REFER TO TABLE

EQUIPMENT SHELF

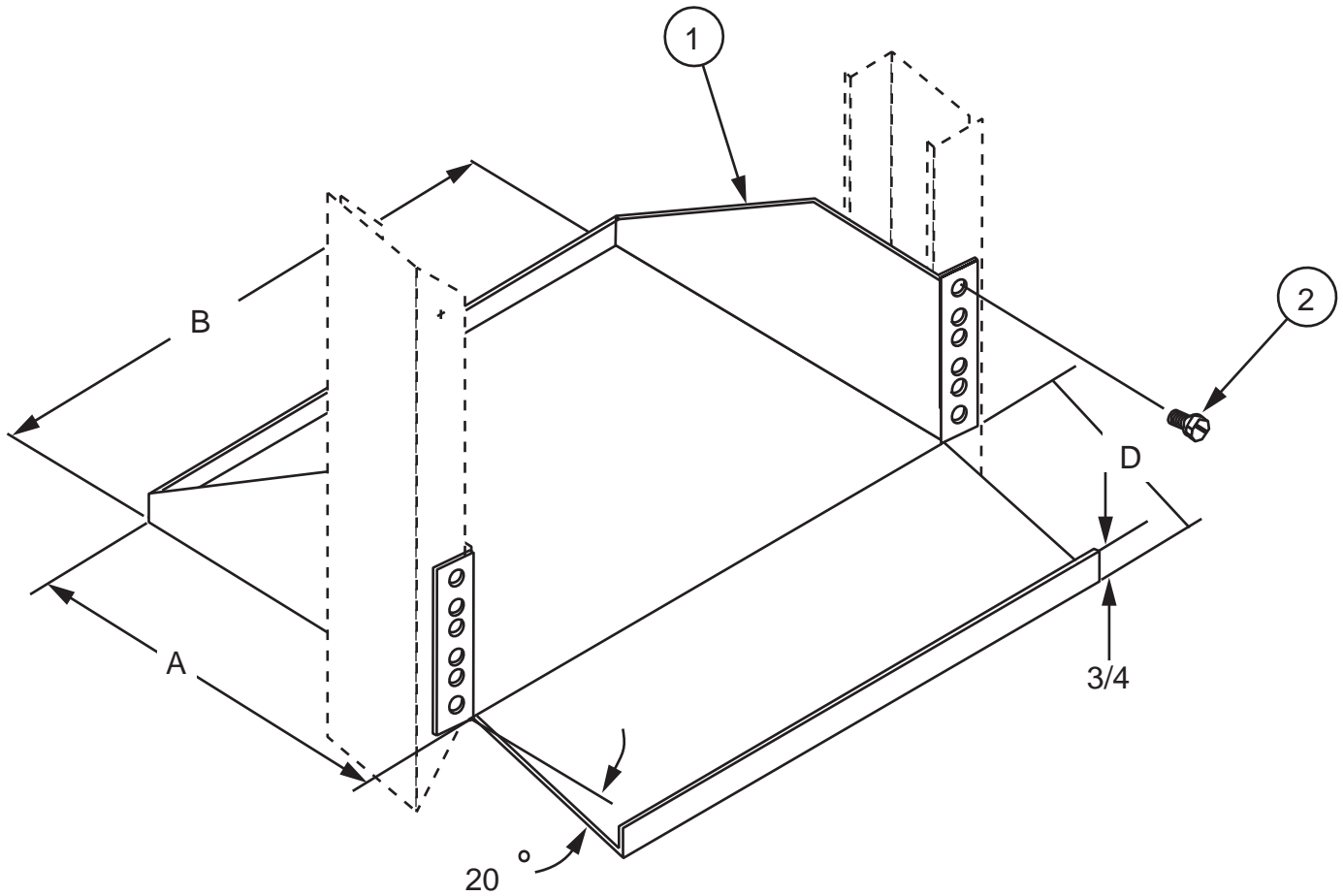
FIG. 004126

NOTES:

- 1. XX= FINISH CODE; STANDARD FINISH, XX= 30.
- 2. MATERIAL: 16 GA STEEL.

STOCK LIST

ITEM	QTY.	DESCRIPTION
1	1	SHELF
2	4	12-24 X 1/2 TRI-LOBE SCREW



ORDERING TABLE

ORDERING NO.	DIM. A	DIM. B	DIM. C	DIM. D
00412701XX	15"	17-3/8"	18-5/16"	7"
00412702XX	15"	21-3/8"	22-5/16"	7"
00412703XX	15"	17-3/8"	18-5/16"	9"
00412704XX	15"	21-3/8"	22-5/16"	9"

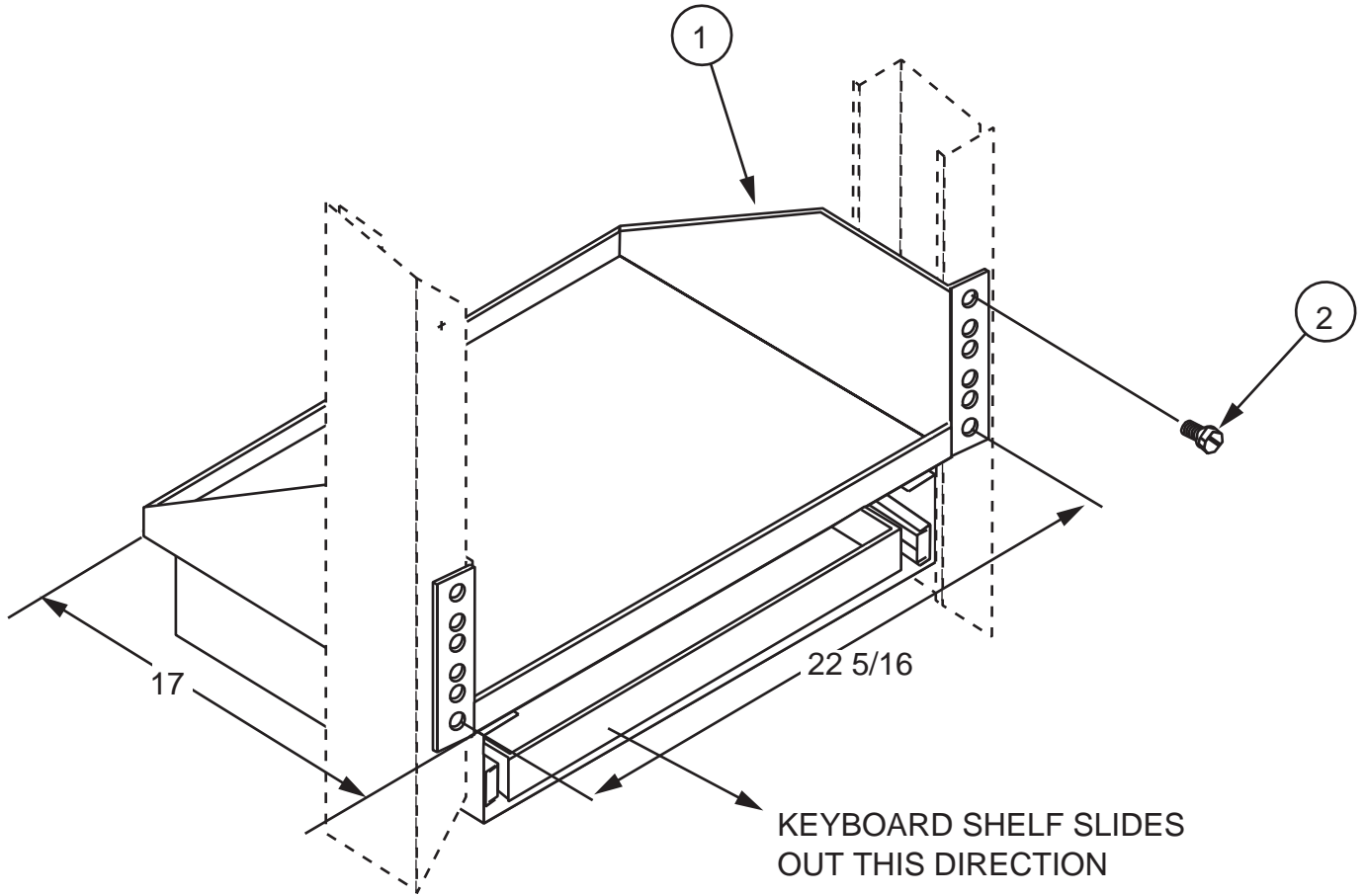
ORDERING NUMBER: REFER TO TABLE

COMPUTER SHELF

FIG. 004127

NOTES:

- 1. XX= FINISH CODE; STANDARD FINISH, XX= 30.
- 2. MATERIAL: 13 GA STEEL.



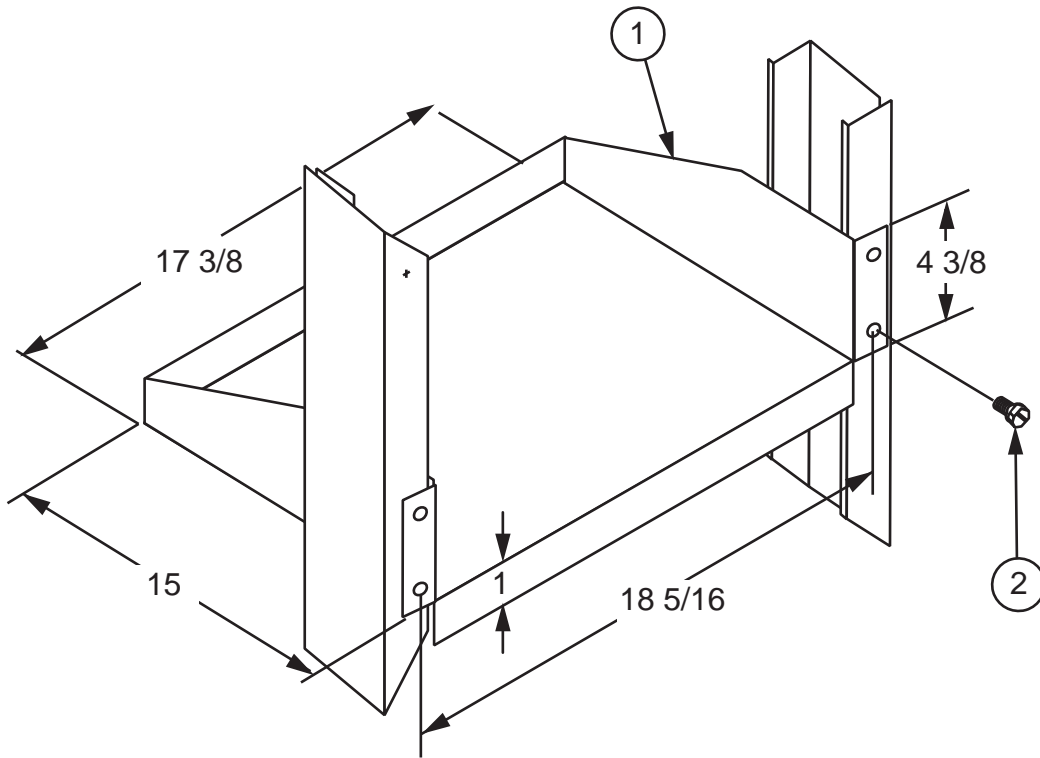
STOCK LIST

ITEM	QTY.	DESCRIPTION
1	1	EQUIPMENT SHELF
2	4	12-24 X 1/2" TRI-LOBE SCREW

ORDERING NUMBER: 00412800XX

KEYBOARD SHELF

FIG. 004128



STOCK LIST

ITEM	QTY.	DESCRIPTION
1	1	EQUIPMENT SHELF
2	4	12-24 X 1/2" TRI-LOBE SCREW

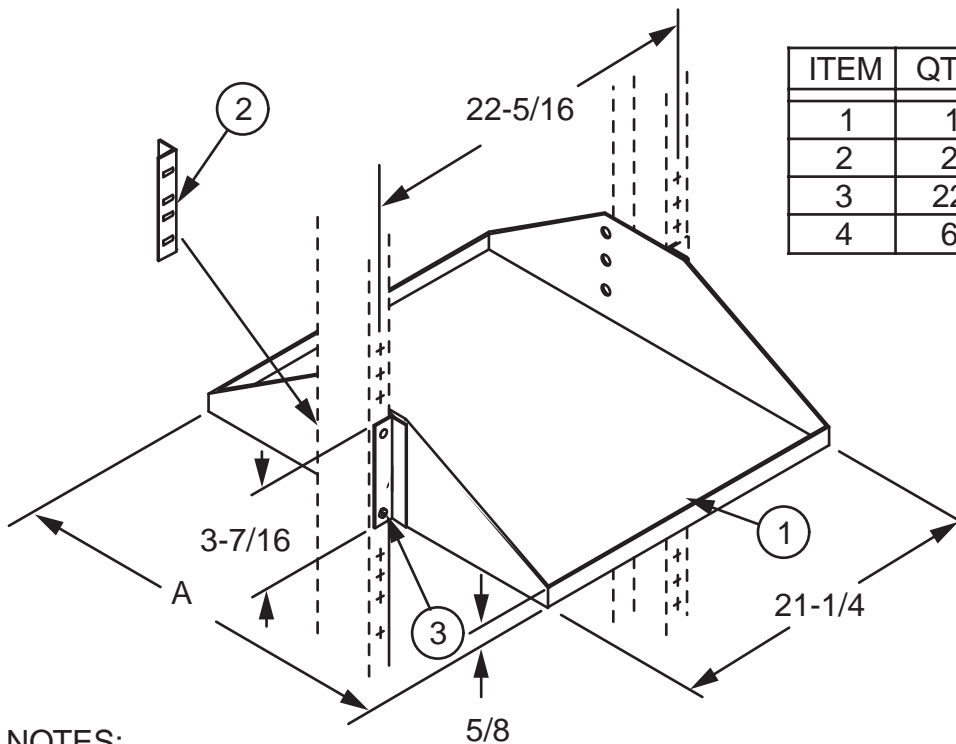
NOTES:

1. XX= FINISH CODE; STANDARD FINISH, XX= 30.
2. MATERIAL: 16 GA STEEL.
3. OTHER SIZES ARE AVAILABLE UPON REQUEST.

ORDERING NUMBER: 00413300XX

EQUIPMENT SHELF

FIG. 004133



STOCK LIST

ITEM	QTY.	DESCRIPTION
1	1	SHELF
2	2	MOUNTING BRACKET
3	22	12-24 X 1/2" PHMS
4	6	12-24 HEX NUT

ORDERING TABLE

ORDERING NO.	DIM. A
00453001XX	15-1/2"
00453002XX	21"
00453002XX	25"

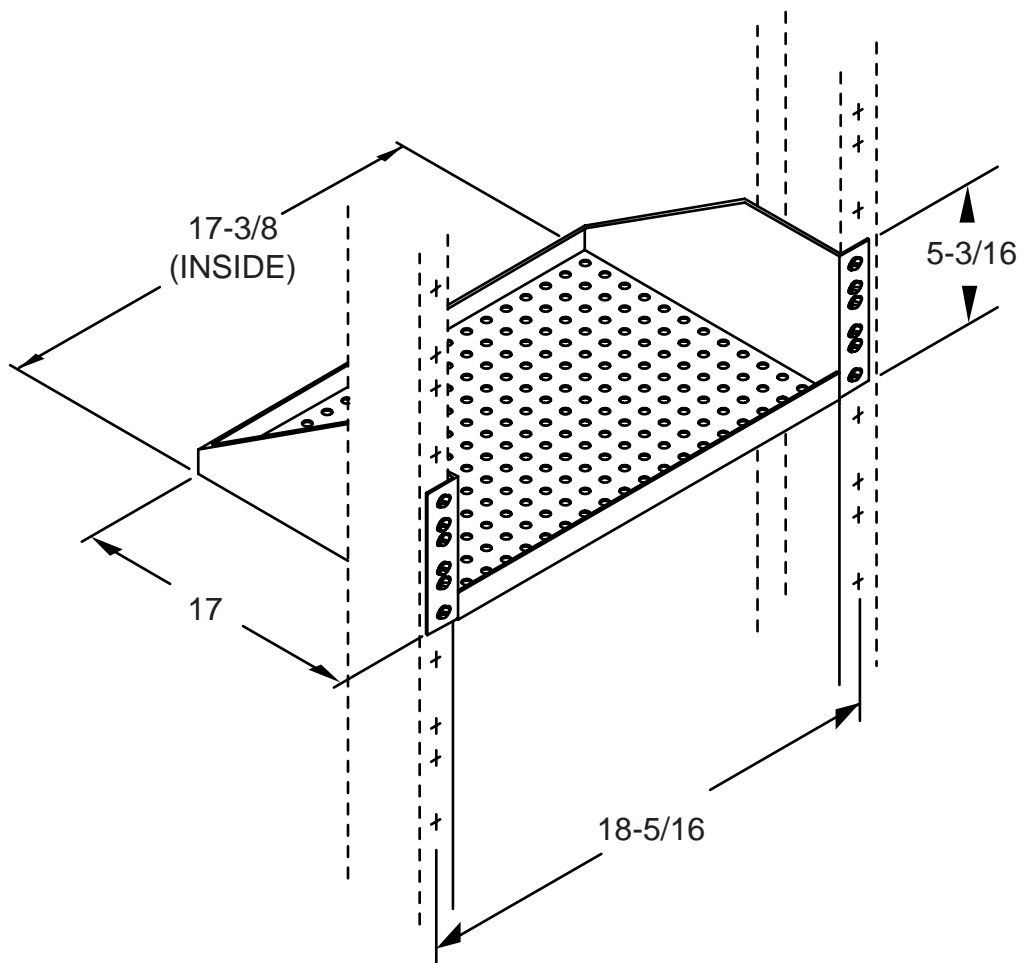
NOTES:

1. XX= FINISH CODE; STANDARD FINISH, XX= 30.
2. OTHER SHELF SIZES AVAILABLE UPON REQUEST.

ORDERING NUMBER: REFER TO TABLE

SHELF ASSEMBLY FOR 23" EQUIPMENT RACK

FIG. 004530



NOTES:

1. XX = FINISH CODE; STANDARD FINISH, XX= 30.
2. INCLUDES TWELVE 12-24 X 1/2" PHMS.

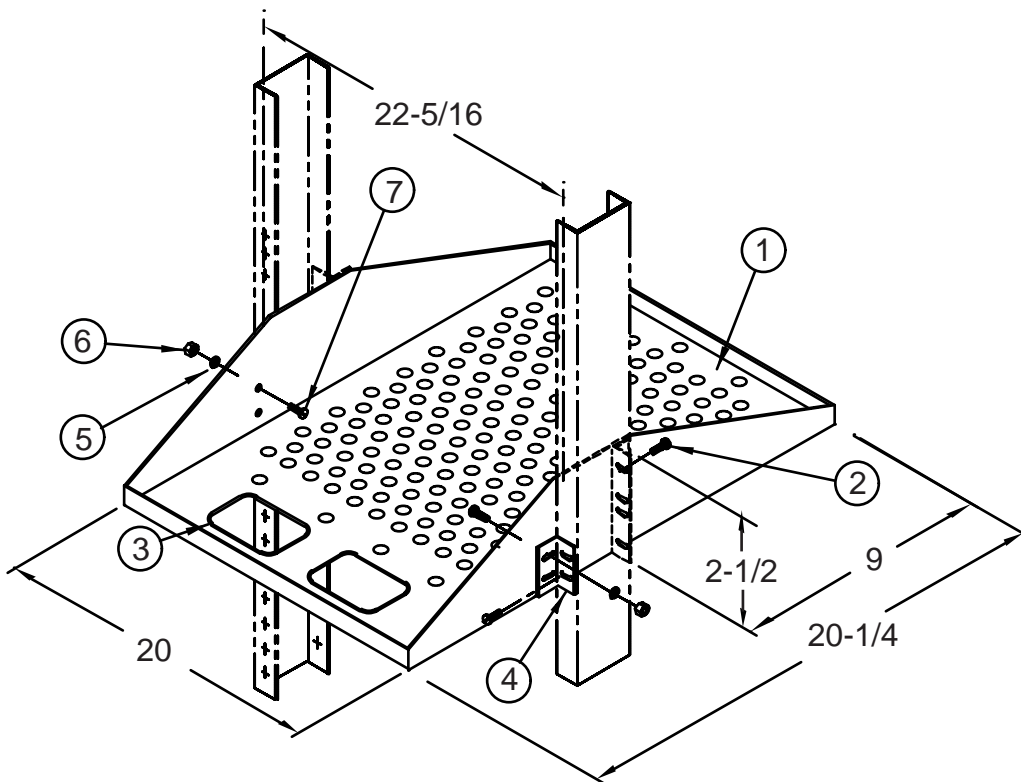
ORDERING NUMBER: 21096500XX

SHELF, VENTED, 19" MOUNTING

FIG. 210965

STOCK LIST

ITEM	QTY	DESCRIPTION
1	1	SHELF ASSEMBLY
2	12	12-24 X 1/4 PHMS
3	1	GROMMET
4	2	FRONT BRACKET
5	4	#12 LOCK WASHER
6	4	12-24 HEX NUT
7	4	12-24 X 1/2 PHMS



NOTES:

- 1. XX= FINISH CODE; STANDARD FINISH, XX= 30.
- 2. SHELF MATERIAL: 11 GAUGE STEEL.

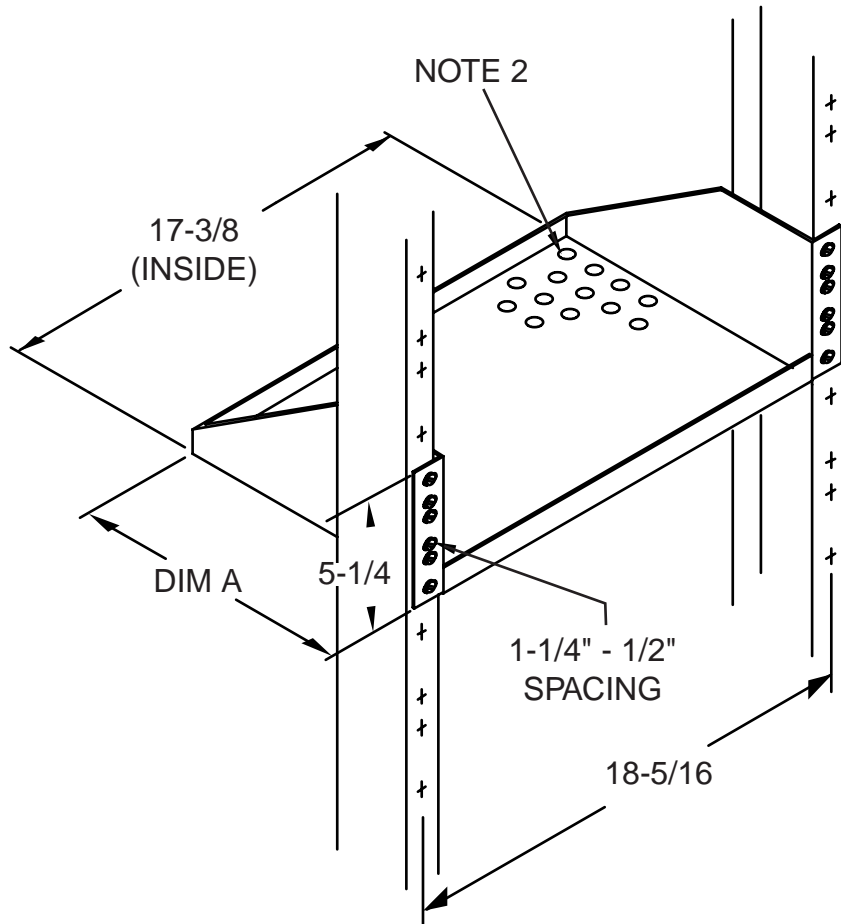
ORDERING NUMBER: 21211400XX

SHELF ASSEMBLY, VENTED, 23" MOUNTING

FIG. 212114

ORDERING TABLE

ORDERING NO.	DIM A
21242100XX	19
21242102XX	24



NOTES:

1. XX = FINISH CODE; STANDARD FINISH, XX= 30.
2. 1/2" D VENT HOLES SHOWN ARE REPRESENTATIVE OF ENTIRE SHELF HOLE PATTERN.
3. INCLUDES TWELVE 12-24 X 1/2" PHMS.

ORDERING NUMBER: REFER TO TABLE

SHELF, VENTED, 19" MOUNTING

**FIG. 212421**

ORDERING TABLE

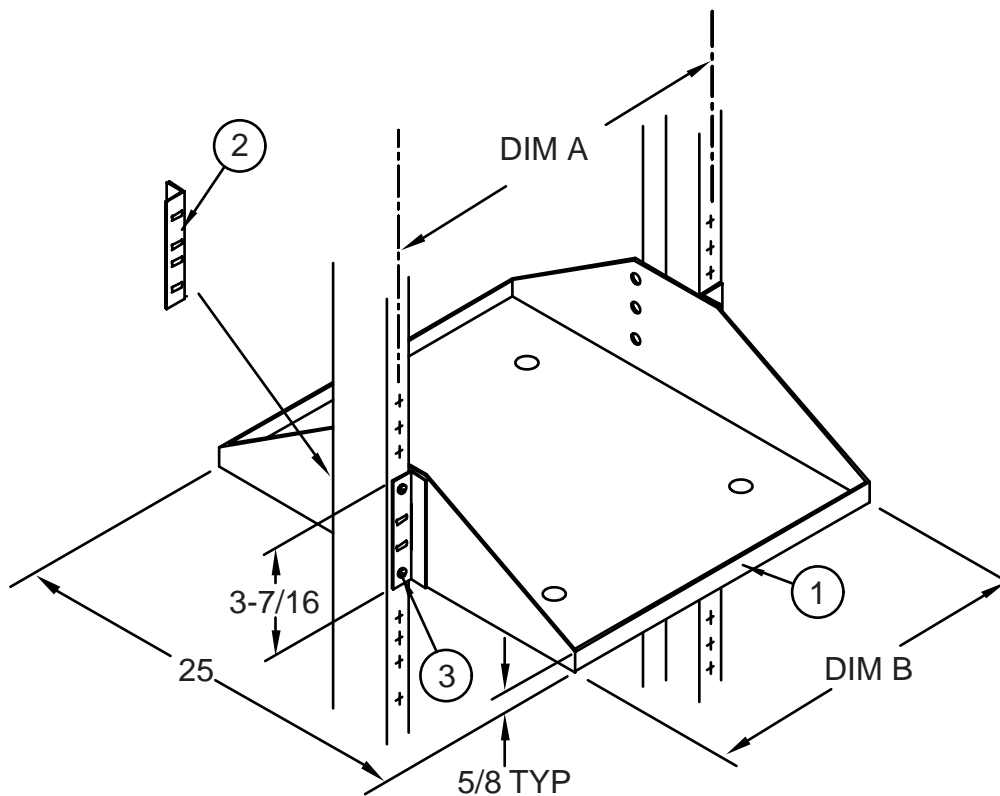
ORDERING NO.	DIM A	DIM B	CISCO ROUTER
21257900XX	18-5/16	17-1/2	7000
21257902XX	22-5/16	21-1/2	7000
21257903XX	18-5/16	17-1/2	7513
21257904XX	22-5/16	21-1/2	7513

STOCK LIST FOR  
7000 ROUTER

ITEM	QTY	DESCRIPTION
1	2	SHELF ASSEMBLY
2	2	MTG. BRACKET
3	22	12-24 X 1/2 PHMS
4	6	12-24 HEX NUT
5	5	5/16-18 X 3/4 HHCS
6	5	EXTERNAL LOCK WASHER

STOCK LIST FOR  
7513 ROUTER

ITEM	QTY	DESCRIPTION
1	1	SHELF ASSEMBLY
2	2	MTG. BRACKET
3	26	12-24 X 1/2 PHMS
4	6	12-24 HEX NUT
5	2	MOUNTING EAR
6	4	M4 X 10MM PHMS



NOTES:

1. XX = FINISH CODE; STANDARD FINISH, XX= 30.

ORDERING NUMBER: REFER TO TABLE

SHELF, FOR CISCO 7000/ 7513 ROUTER

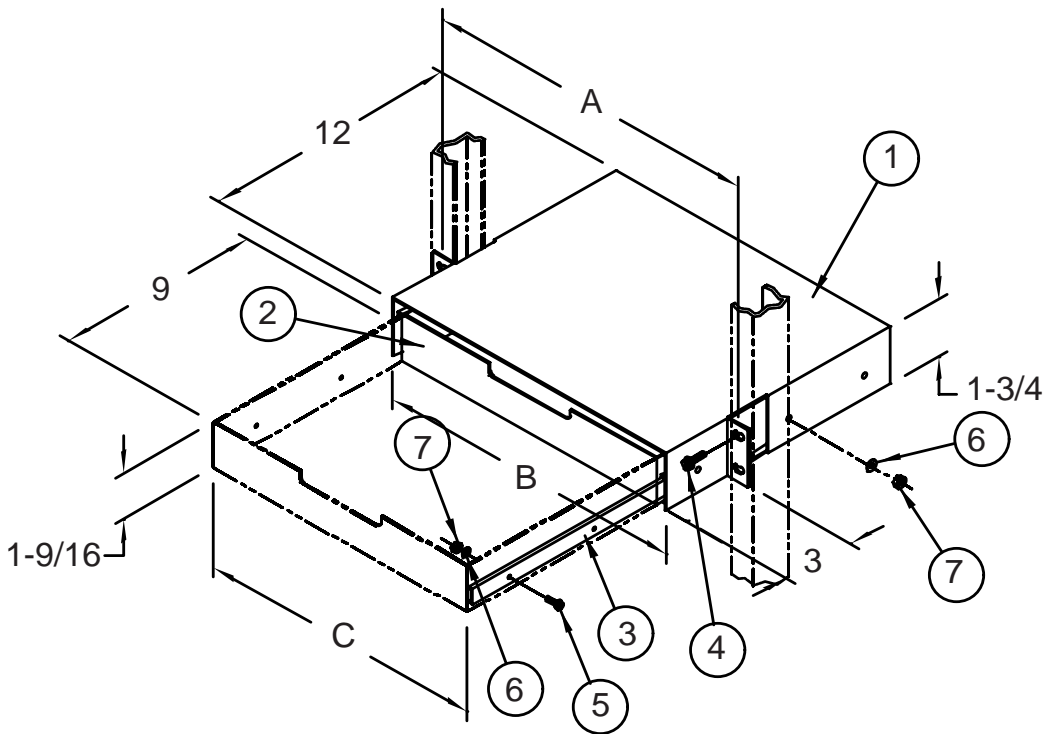
FIG. 212579

ORDERING TABLE

ORDERING NO.	RACK SIZE	DIM A	DIM B	DIM C
21250701XX	19"	18-5/16	17-3/8	16-7/16
21250702XX	23"	22-5/16	21-3/8	20-7/16

STOCK LIST

ITEM	QTY.	DESCRIPTION
1	1	MOUNTING FRAME
2	1	DRAWER
3	2	DRAWER SLIDE
4	4	21-24 X 3/8 PHMS
5	10	8-32 X 5/16 PHMS
6	10	#8 LOCK WASHER
7	10	8-32 HEX NUT



NOTES:

1. XX = FINISH CODE; STANDARD FINISH, XX= 30.
2. SHIPPED ASSEMBLED.

WRITING SHELF ASSEMBLY,  
WITH PULL-OUT DRAWER

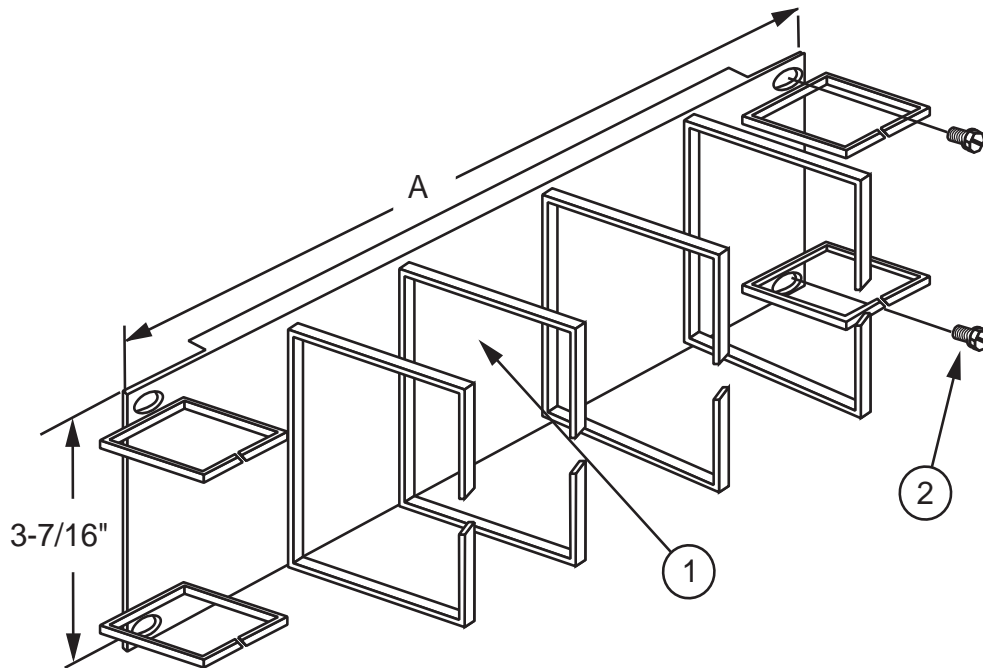
ORDERING NUMBER: REFER TO TABLE  
**FIG. 212507**

NOTES:

1. XX= FINISH CODE; STANDARD FINISH, XX= 30.

STOCK LIST

ITEM	QTY.	DESCRIPTION
1	1	WIRE MANGEMENT PANEL
2	4	12-24 X 1/2 TRI-LOBE SCREW



ORDERING TABLE

ORDERING NO.	DIM. A
00412901XX	19"
00412902XX	23"

ORDERING NUMBER: REFER TO TABLE

WIRE MANAGEMENT PANEL

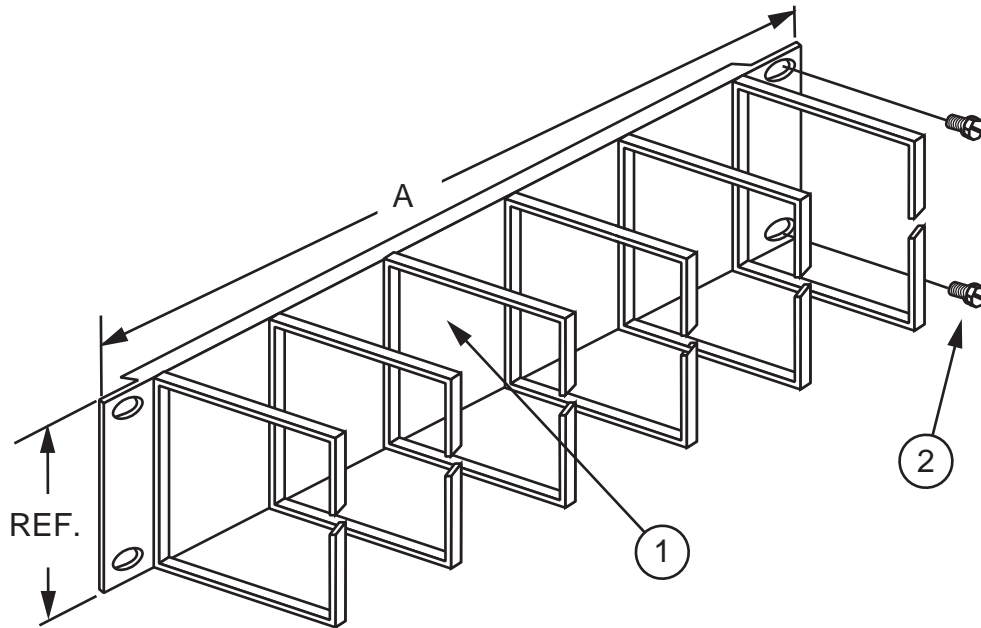
FIG. 004129

NOTES:

1. XX= FINISH CODE; STANDARD FINISH,  
XX= 30.

STOCK LIST

ITEM	QTY.	DESCRIPTION
1	1	WIRE MANGEMENT PANEL
2	4	12-24 X 1/2 TRI-LOBE SCREW



ORDERING TABLE

ORDERING NO.	DIM. A
00413401XX	19"
00413402XX	23"

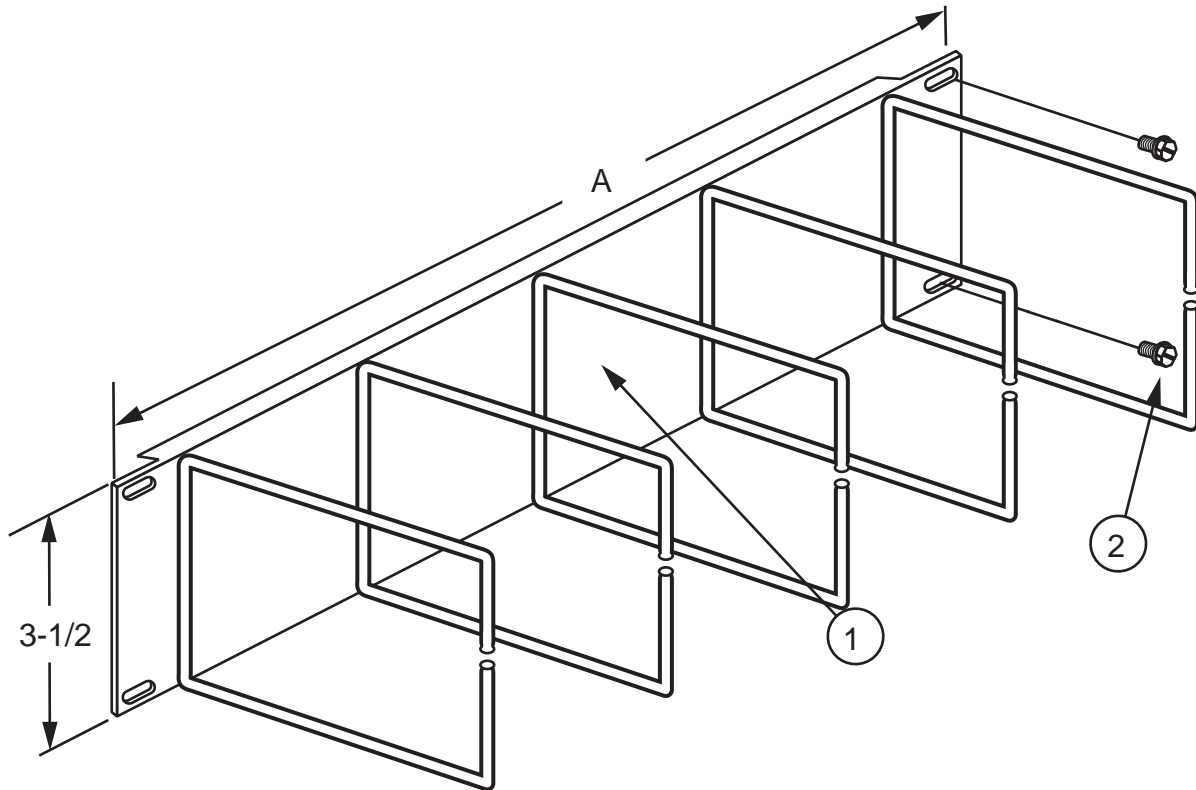
ORDERING NUMBER: REFER TO TABLE

WIRE MANAGEMENT PANEL

FIG. 004134

STOCK LIST

ITEM	QTY.	DESCRIPTION
1	1	WIRE MANAGEMENT PANEL
2	4	12-24 X 1/2" PSTS



ORDERING TABLE

ORDERING NO.	DIM. A
00413501XX	18-5/16"
00413502XX	22-5/16"

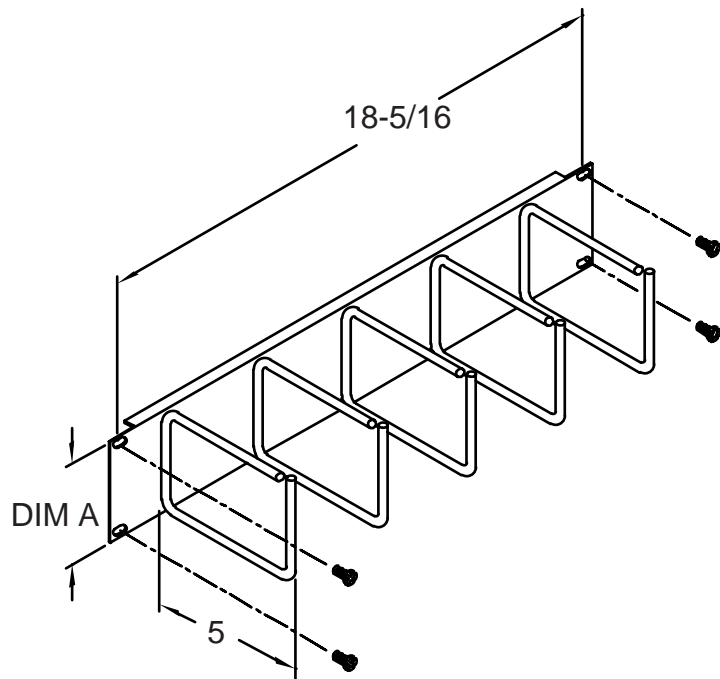
NOTES:

1. XX= FINISH CODE; STANDARD FINISH, XX= 30.

ORDERING NUMBER: REFER TO TABLE

WIRE MANAGEMENT PANEL

FIG. 004135



ORDERING TABLE

ORDERING NO.	DIM A
21440901XX	3-7/16
21140902XX	6-7/16

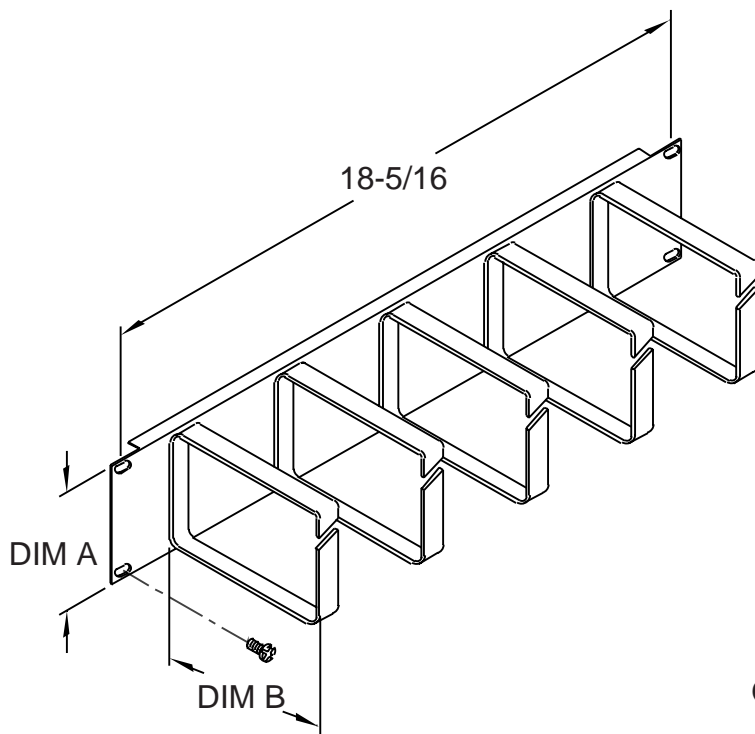
NOTES:

1. XX = FINISH CODE; STANDARD FINISH, XX=30.
2. INCLUDES FOUR 12-24 X 1/2" PAN HEAD STAINLESS STEEL MOUNTING SCREWS.

ORDERING NUMBER: REFER TO TABLE

WIRE MANAGEMENT PANEL, 19"

FIG. 214409



ORDERING TABLE

ORDERING NO.	DIM A	DIM B
21318200XX	6-7/8	8
21318300XX	3-11/32	5

NOTES:

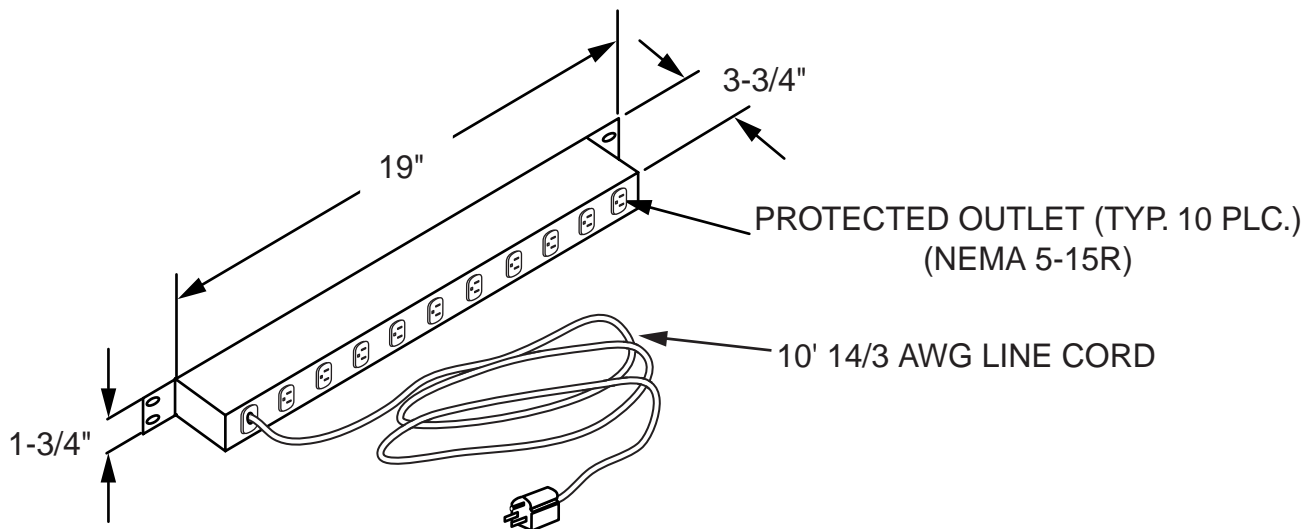
1. XX = FINISH CODE; STANDARD FINISH, XX=30.
2. INCLUDES FOUR 12-24 X 1/2" PAN HEAD STAINLESS STEEL MOUNTING SCREWS.

ORDERING NUMBER: REFER TO TABLE

WIRE MANAGEMENT PANEL, 19"

FIG. 213182

FIG. 213183



ORDERING TABLE

ORDERING NO.	OUTLET COLOR
0041420100	BLACK
0041420200	ORANGE

NOTES:

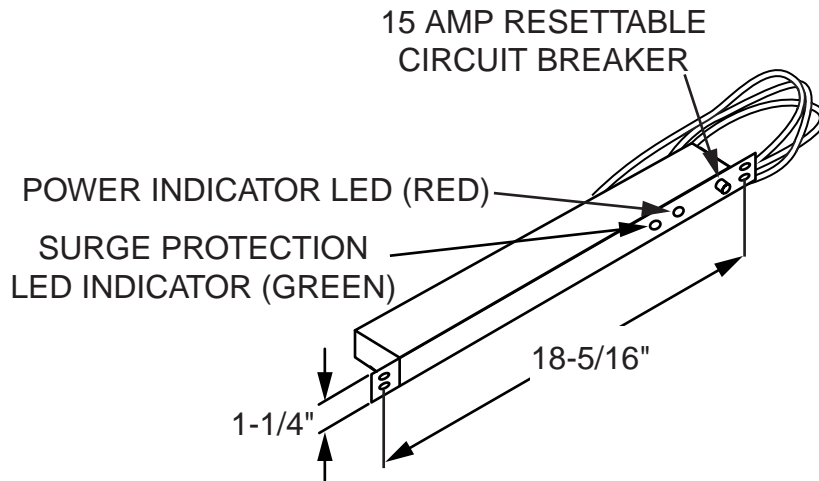
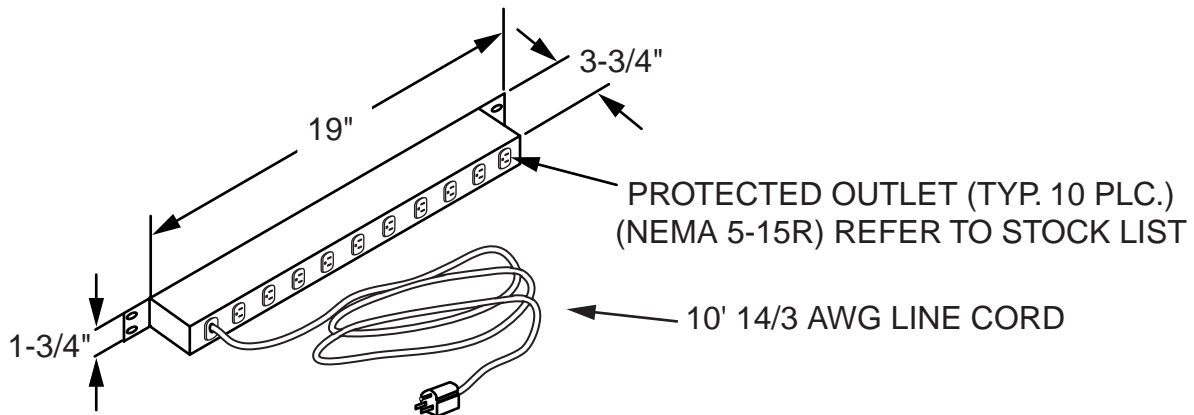
1. UL LISTED PER UL 1449. FILE: E76064.
2. INPUT VOLTAGE: 95-135 VAC, 60 Hz (NOMINAL).
3. OUTPUT: 1875 WATTS @ 125 VAC.
4. SURGE PROTECTION: LINE-TO-NEUTRAL (L-N); LINE-TO-GROUND (L-G); NEUTRAL-TO-GROUND (N-G).  
CLAMP VOLTAGE: 330 VOLTS @ 500 AMPS, 8 X 20 MICROSECONDS (L-N, L-G, N-G).  
PEAK CURRENT: 18,000 VOLTS EACH (L-N, L-G, N-G). RESPONSE TIME: 5 NANOSECONDS.
5. EMI/RFI FILTERING: NONE.
6. MATERIAL/FINISH: 16 AWG STEEL/ BLACK
7. WEIGHT: 7 LBS. (NOMINAL)

POWER STRIP, RACK MOUNTED,  
10 OUTLETS, SURGE PROTECTED

ORDERING NUMBER: REFER TO TABLE  
**FIG. 004142**

NOTES:

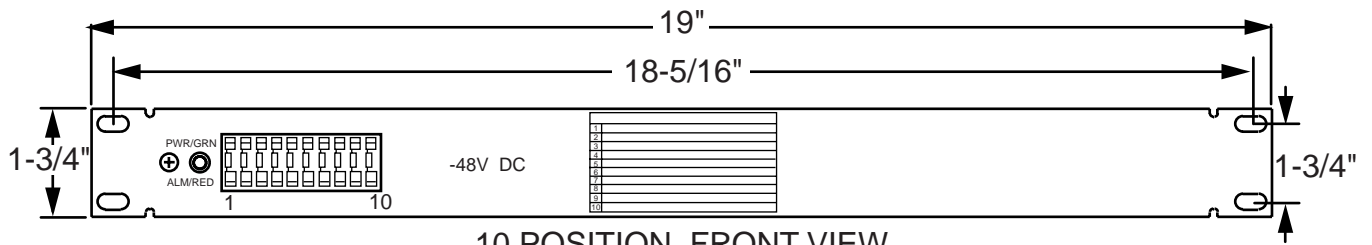
1. MATERIAL/FINISH: 16 AWG STEEL/BLACK.
2. UL LISTED PER UL 1449.
3. INPUT VOLTAGE: 95-135 VAC, 15 AMPS.
4. OUTPUT: 1875 WATTS @125 VAC, 15 AMPS.
5. SURGE PROTECTION: LINE-TO-NEUTRAL (L-N)  
LINE-TO-GROUND (L-G)  
NEUTRAL-TO-GROUND (N-G).
6. CLAMP VOLTAGE: 330 VOLTS @500 AMPS, 8 X 20 MICROSECONDS (L-N, L-G, N-G).
7. TRANSIENT PEAK CURRENT: 18,000 VOLTS EACH (L-N, L-G, N-G).
8. TRANSIENT ENERGY: 240 JOULES EACH (L-N, L-G, N-G).
9. RESPONSE TIME: 5 NANOSECONDS.
10. EMI/RFI FILTERING: NONE.
11. OPERATING TEMPERATURE: 0 TO 70° C.
12. WEIGHT: 7 LBS. (NOMINAL).



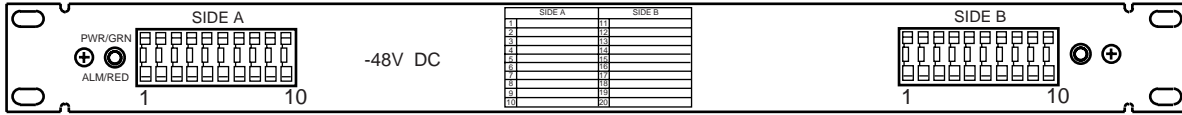
POWER STRIP, RACK MOUNTED,  
10 OUTLETS, SURGE PROTECTED

ORDERING NUMBER: 2155580000

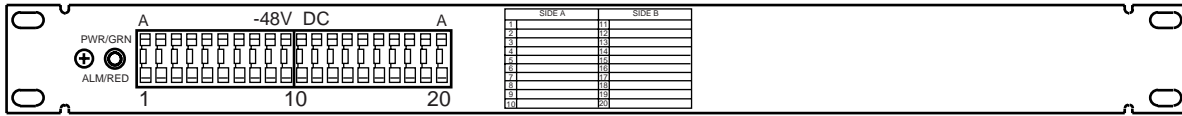
FIG. 215558



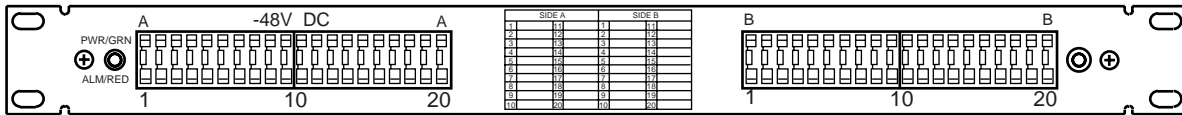
10 POSITION, FRONT VIEW



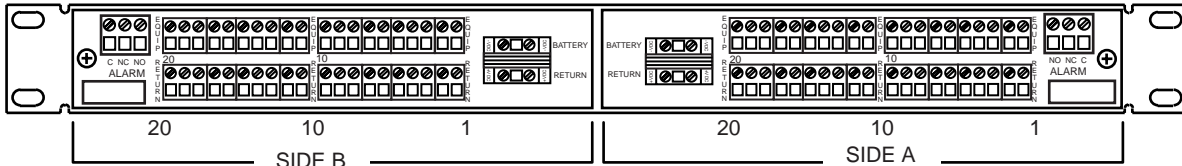
10/10 POSITION, FRONT VIEW



20 POSITION, FRONT VIEW



20/20 POSITION, FRONT VIEW



20/20 POSITION, REAR VIEW, ROTATED (NOTE 9)

ORDERING TABLE

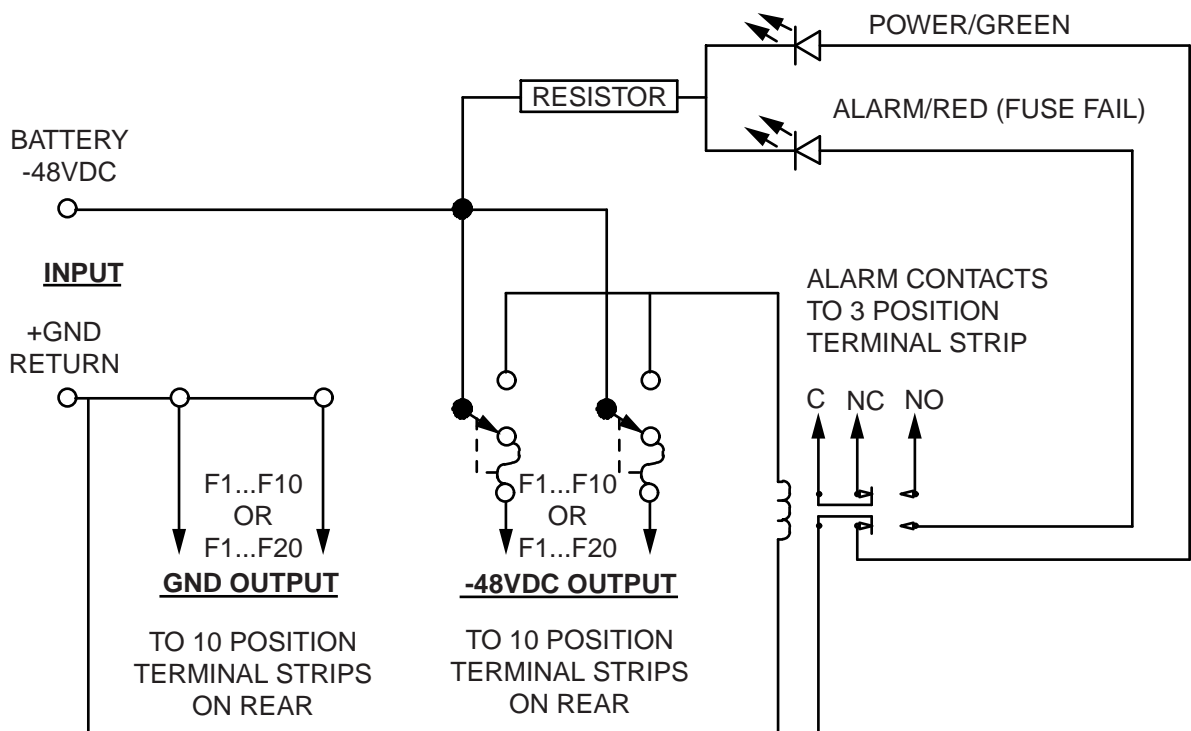
ORDERING NUMBER	NUMBER OF FUSE POSITIONS	DESCRIPTION
7570018001	10 (SIDE A)	-48 VDC, SET SCREW OUTPUT
7570018101	10 (SIDE A)	-48 VDC, TAB OUTPUT
7570019001	10/10 (SIDE A/B)	-48 VDC, SET SCREW OUTPUT
7570019101	10/10 (SIDE A/B)	-48 VDC, TAB OUTPUT
7570020001	20 (SIDE A)	-48 VDC, SET SCREW OUTPUT
7570020101	20 (SIDE A)	-48 VDC, TAB OUTPUT
7570021001	20/20 (SIDE A/B)	-48 VDC, SET SCREW OUTPUT
7570021101	20/20 (SIDE A/B)	-48 VDC, TAB OUTPUT



ORDERING NUMBER: REFER TO TABLE

FUSE PANEL, 19", GMT TYPE

FIG. 757001 / 757002



TYPICAL SCHEMATIC, -48 VDC  
(SIDE A OR SIDE B)

**NOTES:**

1. UL RECOGNIZED COMPONENT.
2. CLEAR ANODIZED, FORMED ALUMINUM (0.080) FRAME.
3. 19' RACK MOUNT, 1-3/4" SPACING.
4. RATED AT 60 AMPS MAXIMUM PER SIDE; 10 AMP MAXIMUM PER FUSE POSITION. SEPARATELY ORDER GMT TYPE FUSES (FIG. 004088) AS REQUIRED.
5. ISOLATED GROUND.
6. GREEN MAIN POWER INDICATOR.
7. RED ALARM INDICATOR (FUSE FAILURE).
8. ISOLATED RELAY CONTACTS FOR REMOTE SENDING OF FUSE FAILURE.
9. REAR VIEW FOR 20/20 POSITION VERSION WITH SET SCREW CONNECTION IS SHOWN AS REPRESENTATIVE OF ALL VERSIONS. FOR 10, 10/10 AND 20 POSITION VERSIONS, THE SAME BASIC COMPONENTS ARE USED BUT IN LESSER QUANTITY.
10. INPUT CONNECTORS (SIDE A OR SIDE B) ACCEPT UP TO 6 AWG WIRE (SOLDERLESS SET SCREW).
11. OUTPUT CONNECTORS ACCEPT UP TO 12 AWG WIRE, SOLID OR STRANDED. (SOLDERLESS SET SCREW OR TAB TERMINALS).
12. DESIGNATION HOLDER INCLUDED; REMOVABLE FUSE DESIGNATION CARD.
13. OTHER CONFIGURATIONS AVAILABLE: FOR WIRE WRAP OUTPUT CONNECTIONS; FOR OTHER VOLTAGES (+ 48VDC, +/- 24VDC, +/- 12VDC); 23" RACK MOUNT.

**ACCESSORIES:**

1. 004088 GMT TYPE FUSE.

ORDERING NUMBER: REFER TO TABLE

FUSE PANEL, 19", GMT TYPE

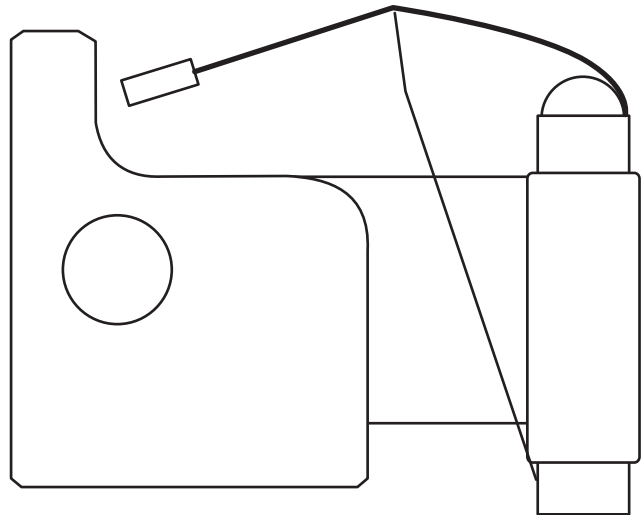
**FIG. 757001 / 757002**

ORDERING TABLE

ORDERING NO.	DESCRIPTION	COLOR CODE
0040880100	GMT 1/4 AMP FUSE	VIOLET
0040880200	GMT 1/2 AMP FUSE	RED
0040880300	GMT 3/4 AMP FUSE	BROWN
0040880400	GMT 1 AMP FUSE	GRAY
0040880500	GMT 1-1/3 AMP FUSE	WHITE
0040880600	GMT 1-1/2 AMP FUSE	WHITE
0040880700	GMT 2 AMP FUSE	ORANGE
0040880800	GMT 3 AMP FUSE	BLUE
0040880900	GMT 5 AMP FUSE	GREEN
0040881000	GMT 10 AMP FUSE	RED & WHITE
0040881100	DUMMY FUSE	---
0040881200	GMT 7-1/2 AMP FUSE	BLACK & WHITE
0040881300	GMT 18/100 AMP FUSE	YELLOW
0040881400	GMT 65/100 AMP FUSE	BLACK
0040881500	GMT 3-1/2 AMP FUSE	BLUE & WHITE
0040881600	GMT 12 AMP FUSE	YELLOW & GREEN

NOTES:

1. INDICATING TYPE, NON-DELAY/  
FAST-ACTING FUSE.
2. MOUNTS IN HLT TYPE PANEL  
MOUNT FUSE HOLDER OR HLS  
TYPE PC-BOARD MOUNT FUSE  
HOLDER.
3. VISUAL SPRING INDICATING AND  
ALARM CIRCUIT ACTIVATION.
4. UL RECOGNIZED.
5. VOLTAGE RATING: 125 VAC, 60 VDC,  
OR LESS.



ORDERING NUMBER: REFER TO TABLE

FUSE, GMT TYPE

**FIG. 004088**